

Synonym

TACSTD2,GA733-1,M1S1,TROP2

Source

Human TROP-2 (88-274) Protein, His Tag(TR2-H52H6) is expressed from human 293 cells (HEK293). It contains AA Thr 88 - Thr 274 (Accession # [P09758-1](#)).

Predicted N-terminus: Thr 88

Molecular Characterization

TROP-2(Thr 88 - Thr 274) P09758-1	Poly-his
--------------------------------------	----------

This protein carries a polyhistidine tag at the C-terminus

The protein has a calculated MW of 23.5 kDa. The protein migrates as 33-43 kDa when calibrated against [Star Ribbon Pre-stained Protein Marker](#) under reducing (R) condition (SDS-PAGE) due to glycosylation.

Endotoxin

Less than 1.0 EU per µg by the LAL method.

Purity

>90% as determined by SDS-PAGE.

Formulation

Lyophilized from 0.22 µm filtered solution in PBS, pH7.4 with trehalose as protectant.

Contact us for customized product form or formulation.

Reconstitution

Please see Certificate of Analysis for specific instructions.

For best performance, we strongly recommend you to follow the reconstitution protocol provided in the CoA.

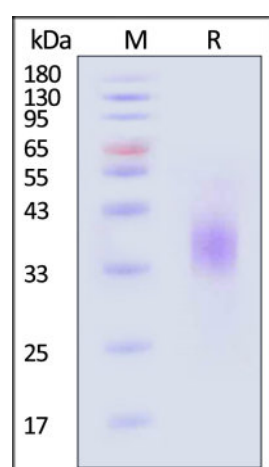
Storage

For long term storage, the product should be stored at lyophilized state at -20°C or lower.

Please avoid repeated freeze-thaw cycles.

This product is stable after storage at:

- -20°C to -70°C for 12 months in lyophilized state;
- -70°C for 3 months under sterile conditions after reconstitution.

SDS-PAGE

Human TROP-2 (88-274) Protein, His Tag on SDS-PAGE under reducing (R) condition. The gel was stained with Coomassie Blue. The purity of the protein is greater than 90% (With [Star Ribbon Pre-stained Protein Marker](#)).

Bioactivity-ELISA**TROP-2 ELISA**

Immobilized Human TROP-2 (88-274) Protein, His Tag (Cat. No. TR2-H52H6) at 1 µg/mL (100 µL/well) can bind Mouse Monoclonal Antibody Against Human TROP-2 Protein, Mouse IgG1 with a linear range of 0.2-4 ng/mL (QC tested).

Background

TROP-2 is a single-copy gene in human cells, and encodes a type-1 transmembrane glycoprotein which is over-expressed in various malignancies, also referred to as tumor associated calcium signal transducer 2 (TACSTD2), GA733-1 or MIS1. TROP-2 is related to epithelial cell adhesion molecule (EpCAM), also called TROP-1, gp40, and KSA. Trop-1 and Trop-2 are homologous to serum IGF-II-binding proteins and appear as signal transducers. Thus, they likely represent novel cell-surface receptors and may play a role in regulating the growth of carcinoma cells.

Clinical and Translational Updates

Please contact us via TechSupport@acrobiosystems.com if you have any question on this product.