

Synonym

T cell receptor beta constant 1, TRBC1

Source

Human TRBC1, His Tag (TR1-H52H4) is expressed from human 293 cells (HEK293). It contains AA Asp 1 - Ala 144 (Accession # [P01850-1](#)).

Molecular Characterization

TRBC1(Asp 1 - Ala 144) P01850-1	Poly-his
------------------------------------	----------

This protein carries a polyhistidine tag at the C-terminus.

The protein has a calculated MW of 18.2 kDa. The protein migrates as 20 kDa and 24 kDa under reducing (R) condition (SDS-PAGE) due to glycosylation.

Endotoxin

Less than 1.0 EU per μg by the LAL method.

Purity

>90% as determined by SDS-PAGE.

Formulation

Lyophilized from 0.22 μm filtered solution in PBS, pH7.4. Normally trehalose is added as protectant before lyophilization.

Reconstitution

Please see Certificate of Analysis for specific instructions.

For best performance, we strongly recommend you to follow the reconstitution protocol provided in the CoA.

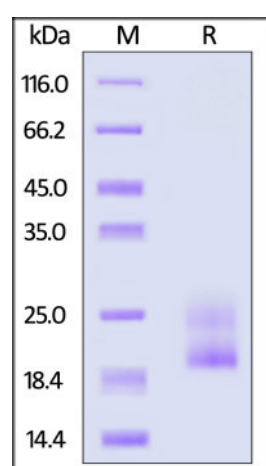
Storage

For long term storage, the product should be stored at lyophilized state at -20°C or lower.

Please avoid repeated freeze-thaw cycles.

This product is stable after storage at:

- -20°C to -70°C for 12 months in lyophilized state;
- -70°C for 3 months under sterile conditions after reconstitution.

SDS-PAGE

Human TRBC1, His Tag on SDS-PAGE under reducing (R) condition. The gel was stained overnight with Coomassie Blue. The purity of the protein is greater than 90%.

Background

The transmembrane protein, TCR, comprise of two disulphide-linked polypeptide chains: a α and β chain, a γ and δ chain. Each polypeptide chain consists of a variable and a constant region. TRBC1 is the constant region of T-cell receptor (TCR) beta chain.

Clinical and Translational Updates

Please contact us via TechSupport@acrobiosystems.com if you have any question on this product.