

Synonym

CD33 antigen-like 3,SIGLEC-15,CD33L3,sialic acid-binding Ig-like lectin 15,Siglec15,Siglec-15

Source

Human Siglec-15, Mouse IgG2a Fc Tag (SG5-H5254) is expressed from human 293 cells (HEK293). It contains AA Phe 20 - Thr 263 (Accession # [Q6ZMC9-1](#)). Predicted N-terminus: Phe 20

Molecular Characterization

Siglec-15(Phe 20 - Thr 263) Q6ZMC9-1	mFc(Glu 98 - Lys 330) P01863
---	---------------------------------

This protein carries a mouse IgG2a Fc tag at the C-terminus.

The protein has a calculated MW of 53.4 kDa. The protein migrates as 55-65 kDa under reducing (R) condition (SDS-PAGE) due to glycosylation.

Endotoxin

Less than 0.1 EU per µg by the LAL method.

Purity

>95% as determined by SDS-PAGE.

>90% as determined by SEC-MALS.

Formulation

Lyophilized from 0.22 µm filtered solution in 50 mM Tris, 100 mM Glycine, 150 mM NaCl, pH7.5. Normally trehalose is added as protectant before lyophilization.

Contact us for customized product form or formulation.

Reconstitution

Please see Certificate of Analysis for specific instructions.

For best performance, we strongly recommend you to follow the reconstitution protocol provided in the CoA.

Storage

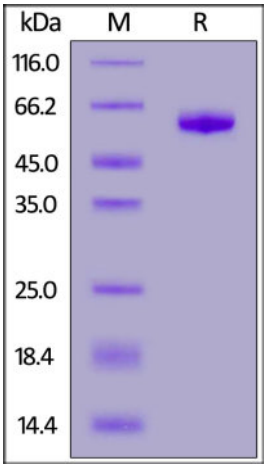
For long term storage, the product should be stored at lyophilized state at -20°C or lower.

Please avoid repeated freeze-thaw cycles.

This product is stable after storage at:

- 20°C to -70°C for 12 months in lyophilized state;
- 70°C for 3 months under sterile conditions after reconstitution.

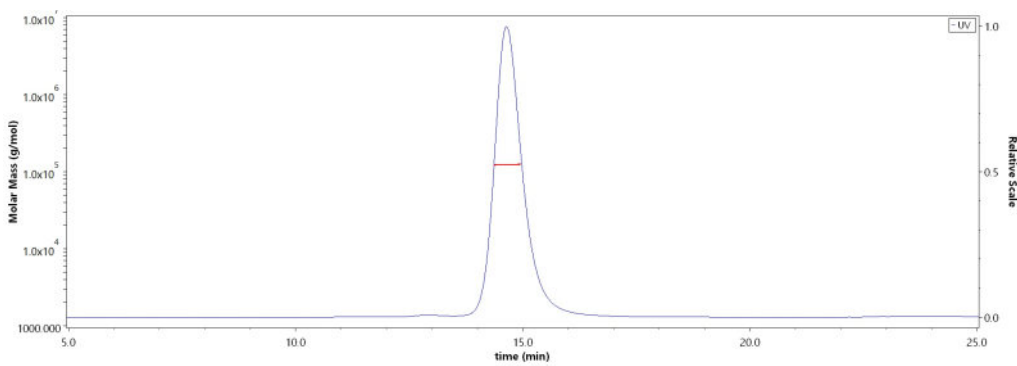
SDS-PAGE



Human Siglec-15, Mouse IgG2a Fc Tag on SDS-PAGE under reducing (R) condition. The gel was stained overnight with Coomassie Blue. The purity of the protein is greater than 95%.

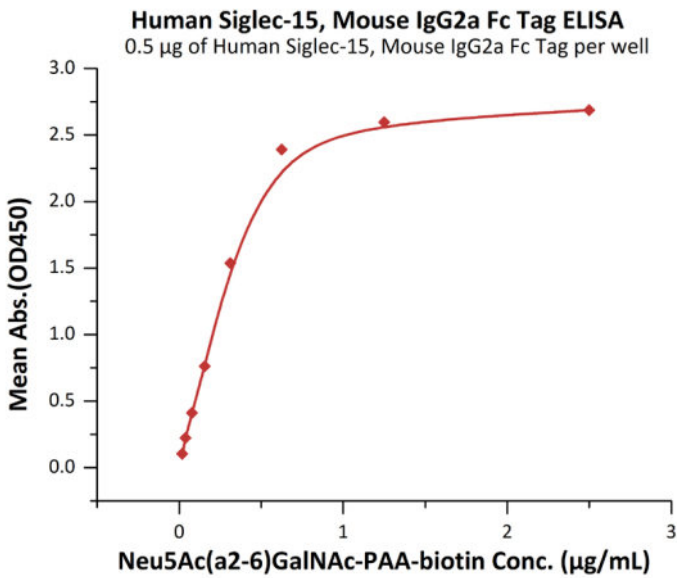
Bioactivity-ELISA

SEC-MALS

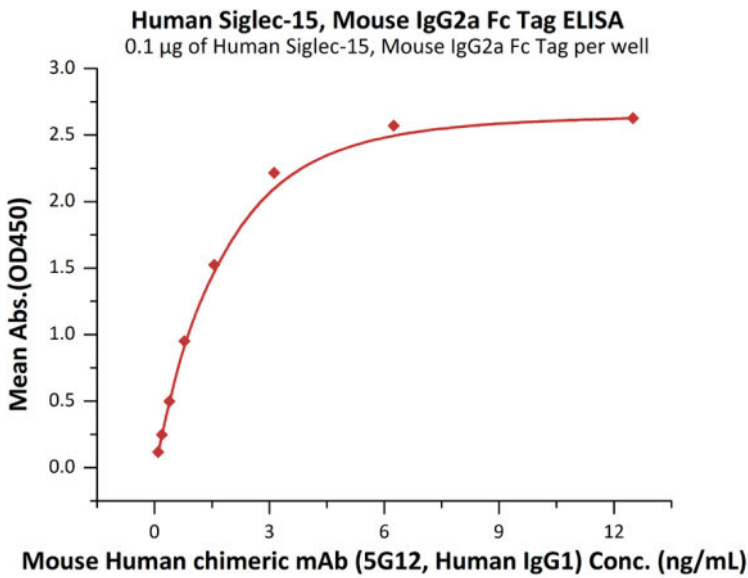


The purity of Human Siglec-15, Mouse IgG2a Fc Tag (Cat. No. SG5-H5254) was more than 90% and the molecular weight of this protein is around 115-130 kDa verified by SEC-MALS.

[Report](#)



Immobilized Human Siglec-15, Mouse IgG2a Fc Tag (Cat. No. [SG5-H5254](#)) at 5 µg/mL (100 µL/well) on Diamond Protein A Protein, His Tag precoated (0.5 µg/well) plate can bind Neu5Ac(a2-6)GalNAc-PAA-biotin with a linear range of 0.02-0.313 µg/mL (QC tested).



Immobilized Human Siglec-15, Mouse IgG2a Fc Tag (Cat. No. [SG5-H5254](#)) at 1 µg/mL (100 µL/well) can bind Mouse Human chimeric mAb (5G12, Human IgG1) with a linear range of 0.1-2 ng/mL (Routinely tested).

Background

Siglec-15 is a DAP12-associated immunoreceptor, which belongs to the immunoglobulin superfamily and SIGLEC (sialic acid binding Ig-like lectin) family. Siglecs are cell surface proteins that bind sialic acid. They are found primarily on the surface of immune cells and are a subset of the I-type lectins. Siglec-15 consisting of immunoglobulin (Ig)-like domains, transmembrane domain and a short cytoplasmic tail. Siglec-15 is that recognizes sialylated glycans and regulates osteoclast differentiation. Siglec-15 is a potential therapeutic target for osteoporosis and plays a conserved regulatory role in the immune system of vertebrates.

References

Please contact us via TechSupport@acrobiosystems.com if you have any question on this product.