

**Source**

Anti-Rituximab Antibody (RIB-Y35c) are expressed from human 293 cells (HEK293).

**Isotype**

Mouse IgG1/kappa

**Specificity**

Recognizes Rituximab specifically, no cross reactivity with other humanized antibodies.

**Application**

This antibody can be paired with other CD20 antibodies to detect CD20 in sandwich ELISA or LFA assay.

**Purity**

>95% as determined by SDS-PAGE.

>90% as determined by SEC-MALS.

**Formulation**

Lyophilized from 0.22 µm filtered solution in PBS, pH7.4 with trehalose as protectant.

Contact us for customized product form or formulation.

**Reconstitution**

Please see Certificate of Analysis for specific instructions.

*For best performance, we strongly recommend you to follow the reconstitution protocol provided in the CoA.*

**Storage**

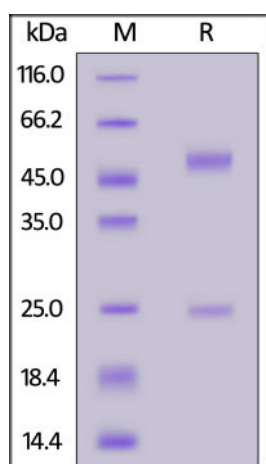
For long term storage, the product should be stored at lyophilized state at -20°C or lower.

*Please avoid repeated freeze-thaw cycles.*

This product is stable after storage at:

- 4-8°C for 12 months in lyophilized state;
- -70°C for 12 months under sterile conditions after reconstitution.

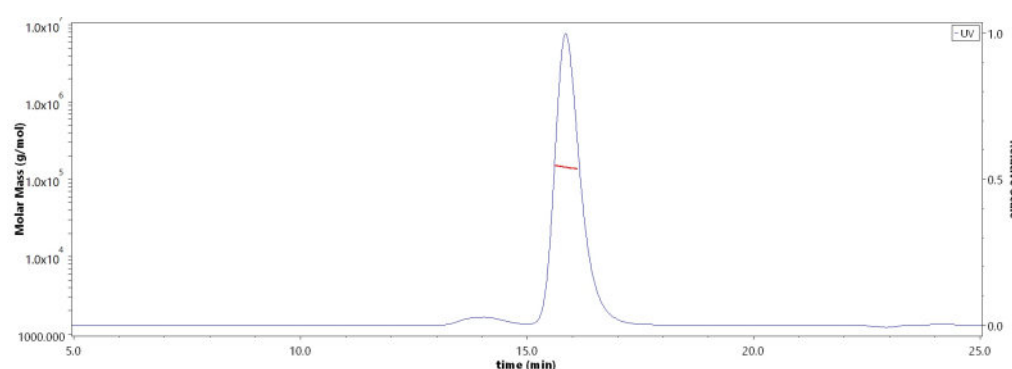
**SDS-PAGE**



Anti-Rituximab Antibody on SDS-PAGE under reducing (R) condition. The gel was stained with Coomassie Blue. The purity of the protein is greater than 95%.

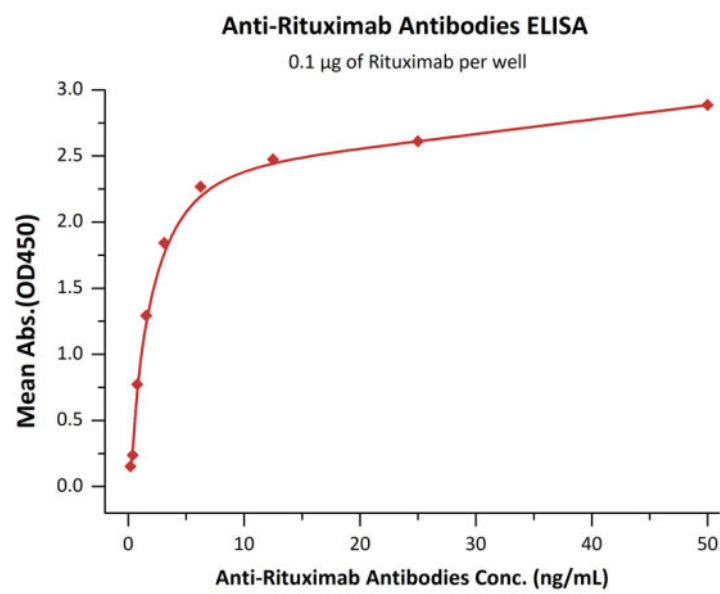
**Bioactivity-Elisa**

**SEC-MALS**

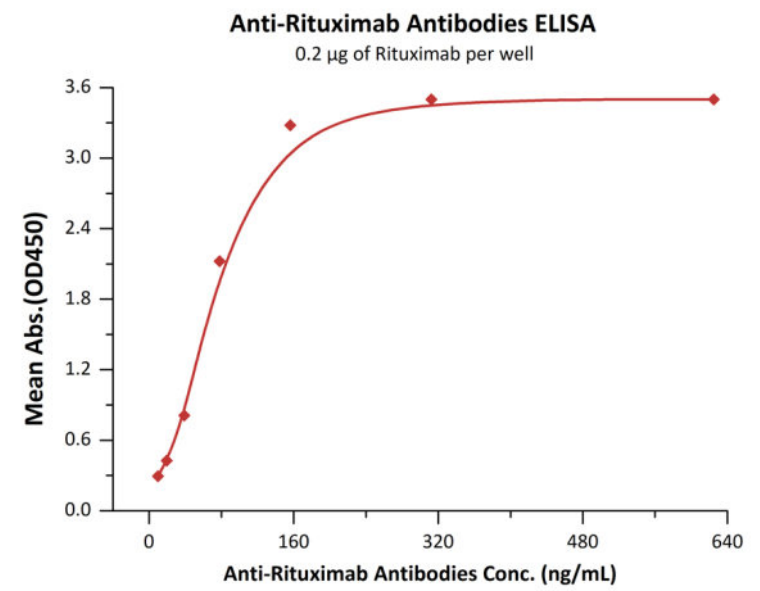


The purity of Anti-Rituximab Antibody (Cat. No. RIB-Y35c) is more than 90% and the molecular weight of this protein is around 135-155kDa verified by SEC-MALS.

[Report](#)



Immobilized Rituximab at 1 µg/mL (100 µL/well) can bind Anti-Rituximab Antibody (Cat. No. RIB-Y35c) with a linear range of 0.2-6 ng/mL (QC tested).



Immobilized Rituximab at 2 µg/mL, add increasing concentrations of Anti-Rituximab Antibody (Cat. No. RIB-Y35c) in the 10% human serum and then add Anti-CD20, Human IgG1 at 5 µg/mL. Detection was performed using HRP-conjugated streptavidin with sensitivity of 100 ng/mL (QC tested).

## Background

Rituxan is a genetically engineered chimeric murine/human monoclonal antibody directed against the CD20 antigen found on the surface of normal and malignant B lymphocytes. The antibody is an IgG1 kappa immunoglobulin containing murine light- and heavy-chain variable region sequences and human constant region sequences. Rituximab is composed of two heavy chains of 451 amino acids and two light chains of 213 amino acids, Anti-Rituximab Antibodies (RIB-Y35c) is the monoclonal antibody of Rituximab expressed with human HEK293 cells.

## Clinical and Translational Updates

Please contact us via [TechSupport@acrobiosystems.com](mailto:TechSupport@acrobiosystems.com) if you have any question on this product.