

Synonym

PDCD1,PD1,CD279,SLEB2

Source

Human PD-1, Mouse IgG2a Fc Tag (PD1-H5255) is expressed from human 293 cells (HEK293). It contains AA Leu 25 - Gln 167 (Accession # [Q15116-1](#)).
Predicted N-terminus: Leu 25

Molecular Characterization

PD-1(Leu 25 - Gln 167) Q15116-1	mFc(Glu 98 - Lys 330) P01863
------------------------------------	---------------------------------

This protein carries a mouse IgG2a Fc tag at the C-terminus.

The protein has a calculated MW of 42.5 kDa. The protein migrates as 55-66 kDa under reducing (R) condition (SDS-PAGE) due to glycosylation.

Endotoxin

Less than 0.1 EU per µg by the LAL method.

Purity

>95% as determined by SDS-PAGE.

>90% as determined by SEC-HPLC.

Formulation

Lyophilized from 0.22 µm filtered solution in PBS, pH7.4. Normally trehalose is added as protectant before lyophilization.

Contact us for customized product form or formulation.

Reconstitution

Please see Certificate of Analysis for specific instructions.

For best performance, we strongly recommend you to follow the reconstitution protocol provided in the CoA.

Storage

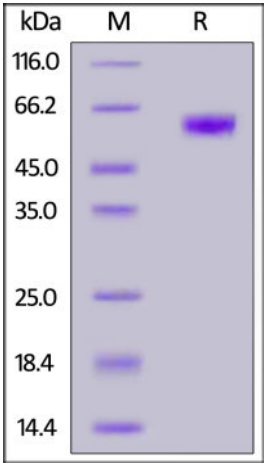
For long term storage, the product should be stored at lyophilized state at -20°C or lower.

Please avoid repeated freeze-thaw cycles.

This product is stable after storage at:

- -20°C to -70°C for 12 months in lyophilized state;
- -70°C for 12 months under sterile conditions after reconstitution.

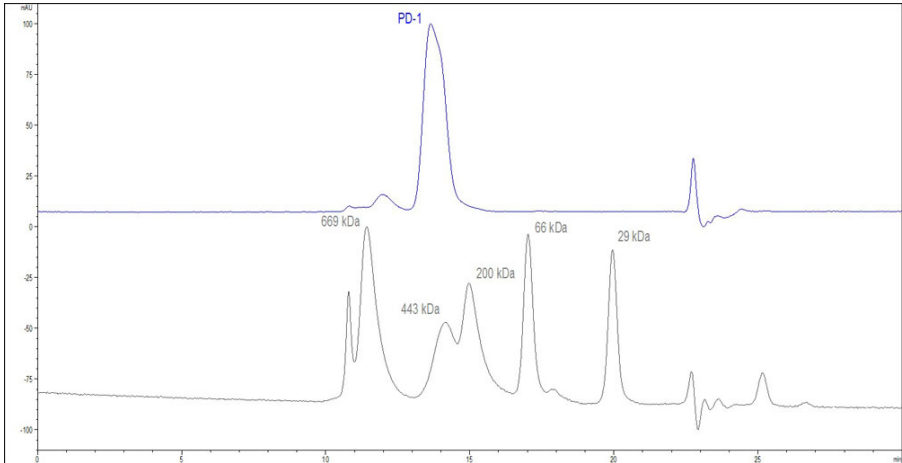
SDS-PAGE



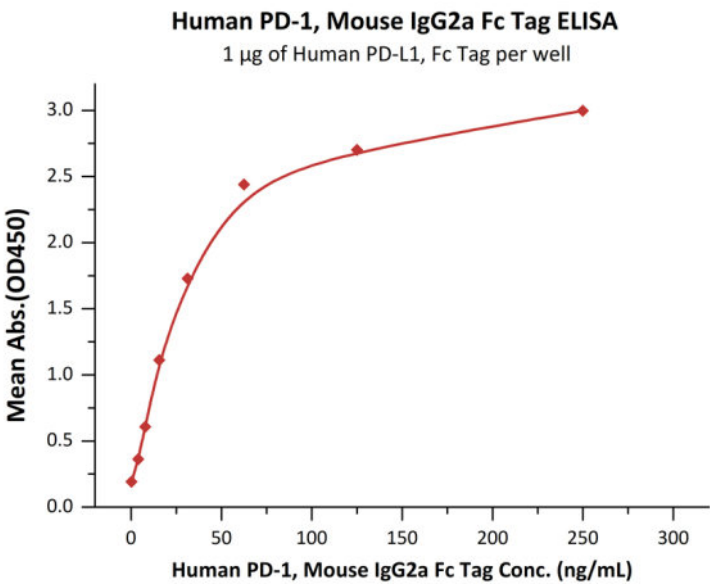
Human PD-1, Mouse IgG2a Fc Tag on SDS-PAGE under reducing (R) condition. The gel was stained overnight with Coomassie Blue. The purity of the protein is greater than 95%.

Bioactivity-ELISA

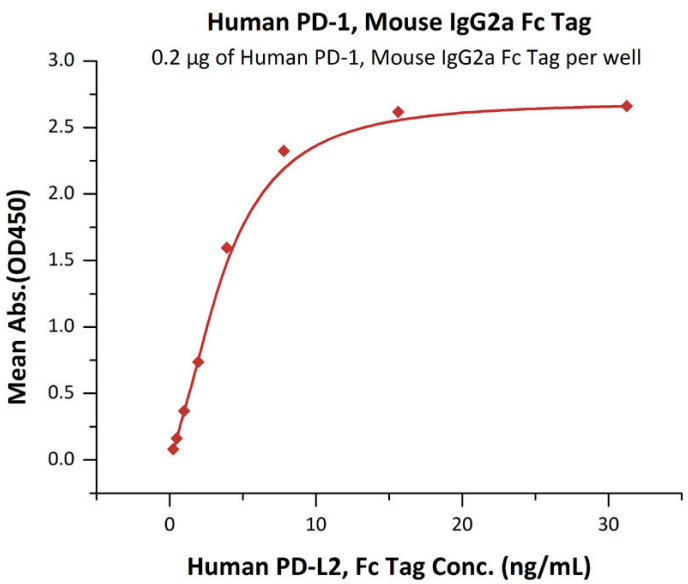
SEC-HPLC



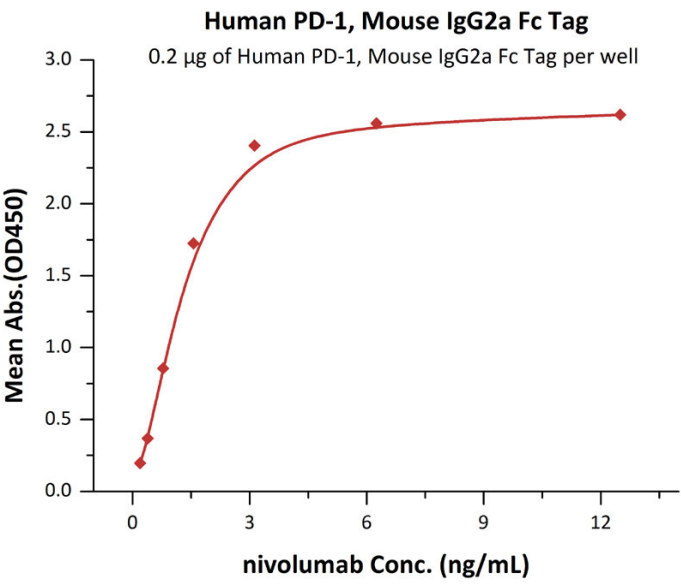
The purity of Human PD-1, Mouse IgG2a Fc Tag (Cat. No. PD1-H5255) was greater than 90% as determined by SEC-HPLC.



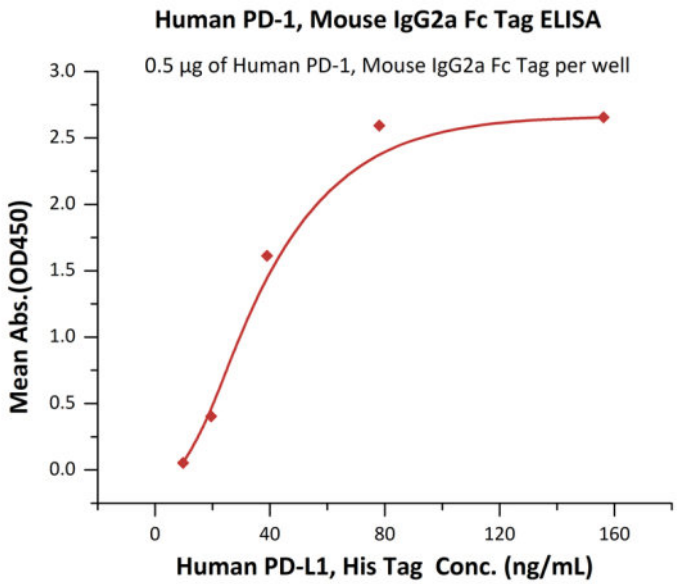
Immobilized Human PD-L1, Fc Tag (Cat. No. [PD1-H5258](#)) at 10 µg/mL (100 µL/well) can bind Human PD-1, Mouse IgG2a Fc Tag (Cat. No. [PD1-H5255](#)) with a linear range of 4-63 ng/mL (QC tested).



Immobilized Human PD-1, Mouse IgG2a Fc Tag (Cat. No. [PD1-H5255](#)) at 2 µg/mL (100 µL/well) can bind Human PD-L2, Fc Tag (Cat. No. [PD2-H5251](#)) with a linear range of 0.2-4 ng/mL (Routinely tested).

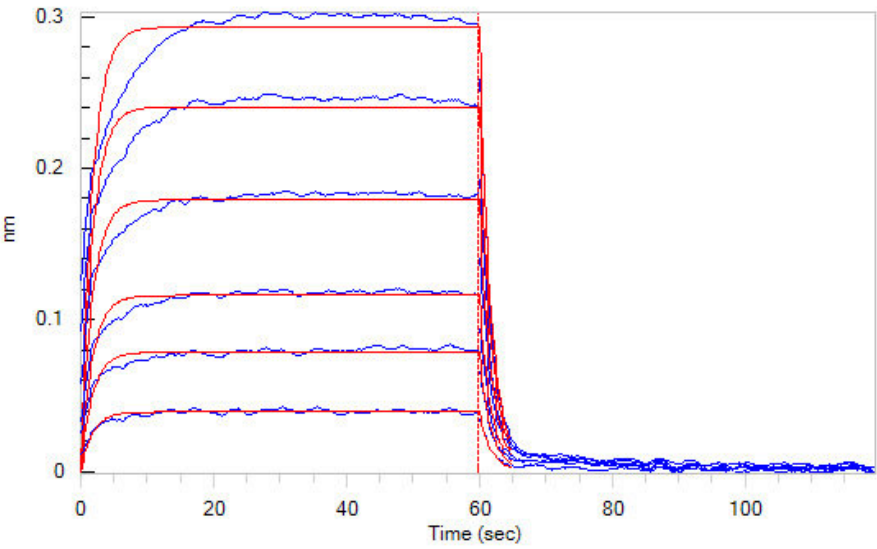


Immobilized Human PD-1, Mouse IgG2a Fc Tag (Cat. No. [PD1-H5255](#)) at 2 µg/mL (100 µL/well) can bind Nivolumab with a linear range of 0.1-2 ng/mL (Routinely tested).

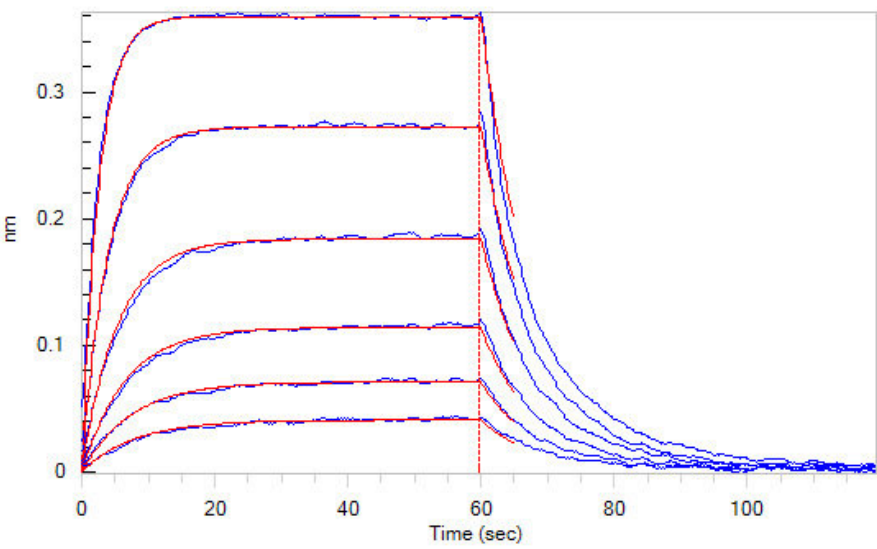


Immobilized Human PD-L1, His Tag (Cat. No. [PD1-H5229](#)) at series of concentration on MonRab™ Anti-His Tag (C-term) Antibody precoated (0.1 µg/well) plate, can bind Human PD-1, Mouse IgG2a Fc Tag (Cat. No. [PD1-H5255](#)) at 5 µg/mL (100 µL/well) with a linear range of 10-78 ng/mL (Routinely tested).

Bioactivity-BLI



Loaded Human PD-1, Mouse IgG2a Fc Tag (Cat. No. [PD1-H5255](#)) on Protein A Biosensor, can bind Human PD-L1, His Tag (Cat. No. [PD1-H5229](#)) with an



Loaded Human PD-1, Mouse IgG2a Fc Tag (Cat. No. [PD1-H5255](#)) on Protein A Biosensor, can bind Human PD-L2, His Tag (Cat. No. [PD2-H5220](#)) with an

Catalog # PD1-H5255

affinity constant of 2.6 μ M as determined in BLI assay (ForteBio Octet Red96e) (Routinely tested).	affinity constant of 0.43 μ M as determined in BLI assay (ForteBio Octet Red96e) (Routinely tested).
---	--

Background

Programmed cell death protein 1 (PD-1) is also known as CD279 and PDCD1, is a type I membrane protein and is a member of the extended CD28/CTLA-4 family of T cell regulators. PDCD1 is expressed on the surface of activated T cells, B cells, macrophages, myeloid cells and a subset of thymocytes. PD-1 has two ligands, PD-L1 and PD-L2, which are members of the B7 family. PD-L1 is expressed on almost all murine tumor cell lines, including PA1 myeloma, P815 mastocytoma, and B16 melanoma upon treatment with IFN- γ . PD-L2 expression is more restricted and is expressed mainly by DCs and a few tumor lines. PD1 inhibits the T-cell proliferation and production of related cytokines including IL-1, IL-4, IL-10 and IFN- γ by suppressing the activation and transduction of PI3K/AKT pathway. In addition, coligation of PD1 inhibits BCR-mediating signal by dephosphorylating key signal transducer. In vitro, treatment of anti-CD3 stimulated T cells with PD-L1-Ig results in reduced T cell proliferation and IFN- γ secretion. Monoclonal antibodies targeting PD-1 that boost the immune system are being developed for the treatment of cancer.

Clinical and Translational Updates

Please contact us via TechSupport@acrobiosystems.com if you have any question on this product.