

Synonym

MSLN, Mesothelin, MPF

Source

Mouse Mesothelin (298-600), His Tag(MSN-M52H3) is expressed from human 293 cells (HEK293). It contains AA Asp 298 - Ser 600 (Accession # [Q61468-1](#)).

Predicted N-terminus: Asp 298

Molecular Characterization

Mesothelin(Asp 298 - Ser 600) Q61468-1	Poly-his
---	----------

This protein carries a polyhistidine tag at the C-terminus

The protein has a calculated MW of 36.0 kDa. The protein migrates as 42-48 kDa under reducing (R) condition (SDS-PAGE) due to glycosylation.

Endotoxin

Less than 1.0 EU per µg by the LAL method.

Purity

>90% as determined by SDS-PAGE.

>90% as determined by SEC-MALS.

Formulation

Lyophilized from 0.22 µm filtered solution in PBS, pH7.4 with trehalose as protectant.

Contact us for customized product form or formulation.

Reconstitution

Please see Certificate of Analysis for specific instructions.

For best performance, we strongly recommend you to follow the reconstitution protocol provided in the CoA.

Storage

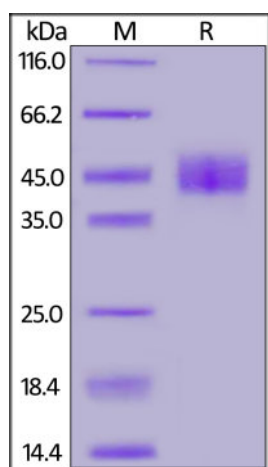
For long term storage, the product should be stored at lyophilized state at -20°C or lower.

Please avoid repeated freeze-thaw cycles.

This product is stable after storage at:

- -20°C to -70°C for 12 months in lyophilized state;
- -70°C for 3 months under sterile conditions after reconstitution.

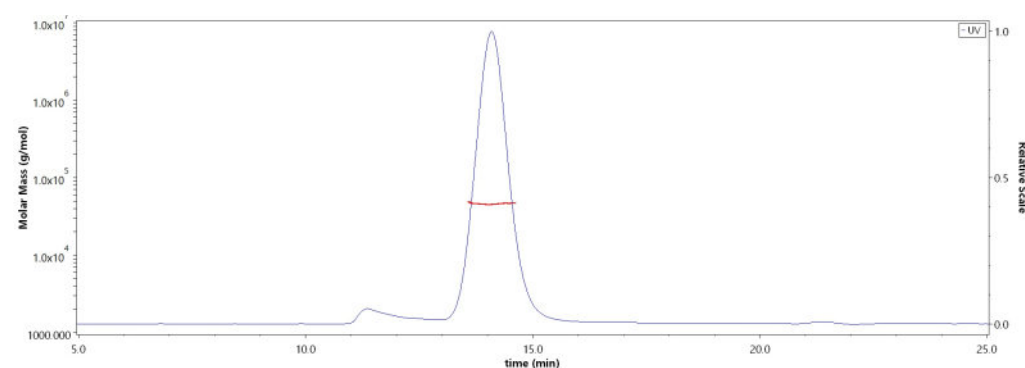
SDS-PAGE



Mouse Mesothelin (298-600), His Tag on SDS-PAGE under reducing (R) condition. The gel was stained overnight with Coomassie Blue. The purity of the protein is greater than 90%.

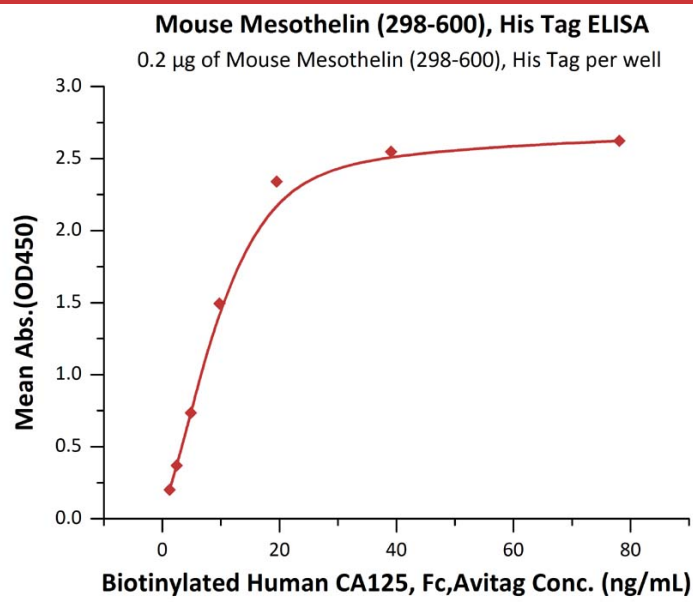
Bioactivity-ELISA

SEC-MALS



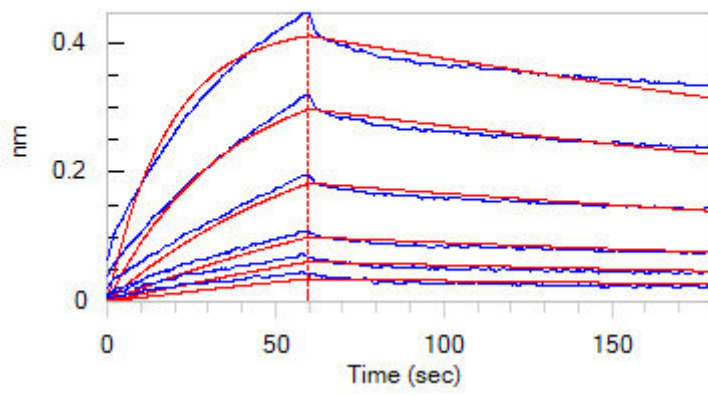
The purity of Mouse Mesothelin (298-600), His Tag (Cat. No. MSN-M52H3) is more than 90% and the molecular weight of this protein is around 40-55 kDa verified by SEC-MALS.

[Report](#)



Immobilized Mouse Mesothelin (298-600), His Tag (Cat. No. MSN-M52H3) at 2 µg/mL (100 µL/well) can bind Biotinylated Human CA125, Fc,Avitag (Cat. No. CA5-H82F4) with a linear range of 0.6-10 ng/mL (QC tested).

Bioactivity-BLI



Loaded Monoclonal Anti-Human MSLN Antibody, Human IgG1 (Cat. No. MSN-M30) on Protein A Biosensor, can bind Mouse Mesothelin (298-600), His Tag (Cat. No. MSN-M52H3) with an affinity constant of 170 nM as determined in BLI assay (ForteBio Octet Red96e) (Routinely tested).

Background

Mesothelin (MSLN) is also known as CAK1 antigen, Pre-pro-megakaryocyte-potentiating factor, which belongs to the mesothelin family. Mesothelin / MSLN can be proteolytically cleaved into the following two chains by a furin-like convertase: Megakaryocyte-potentiating factor (MPF) and the cleaved form of mesothelin. Both MPF and the cleaved form of mesothelin are N-glycosylated. Mesothelin / MSLN can interact with MUC16. The membrane-anchored forms of MSLN may play a role in cellular adhesion. MPF potentiates megakaryocyte colony formation in vitro.

Clinical and Translational Updates

Please contact us via TechSupport@acrobiosystems.com if you have any question on this product.