

Synonym

MSLN, Mesothelin, MPF

Source

Cynomolgus Mesothelin (296-580), His Tag(MSN-C52H6) is expressed from human 293 cells (HEK293). It contains AA Asp 296 - Gly 580 (Accession # [A0A2K5TW94-1](#)).

Predicted N-terminus: Asp 296

Molecular Characterization

Mesothelin(Asp 296 - Gly 580) A0A2K5TW94-1	Poly-his
---	----------

This protein carries a polyhistidine tag at the C-terminus.

The protein has a calculated MW of 33.7 kDa. The protein migrates as 35-50 kDa under reducing (R) condition (SDS-PAGE) due to glycosylation.

Endotoxin

Less than 1.0 EU per µg by the LAL method.

Purity

>95% as determined by SDS-PAGE.

>90% as determined by SEC-MALS.

Formulation

Lyophilized from 0.22 µm filtered solution in PBS, pH7.4 with trehalose as protectant.

Contact us for customized product form or formulation.

Reconstitution

Please see Certificate of Analysis for specific instructions.

For best performance, we strongly recommend you to follow the reconstitution protocol provided in the CoA.

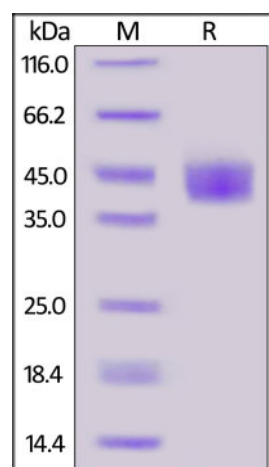
Storage

For long term storage, the product should be stored at lyophilized state at -20°C or lower.

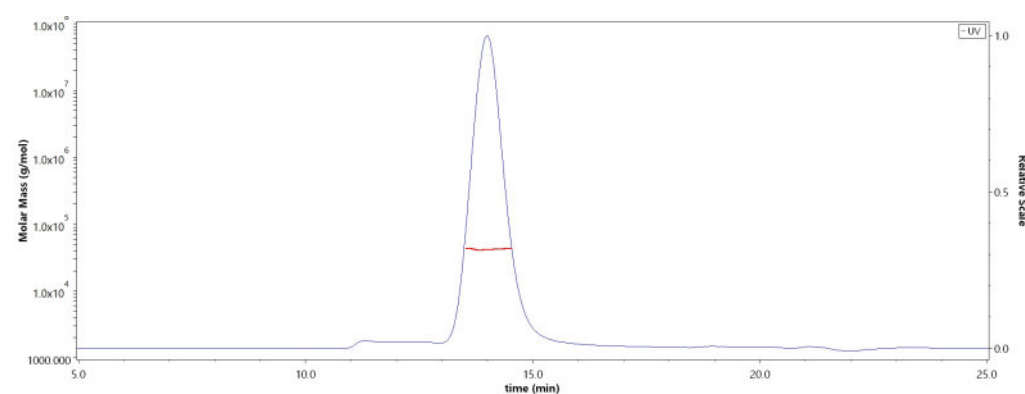
Please avoid repeated freeze-thaw cycles.

This product is stable after storage at:

- -20°C to -70°C for 12 months in lyophilized state;
- -70°C for 3 months under sterile conditions after reconstitution.

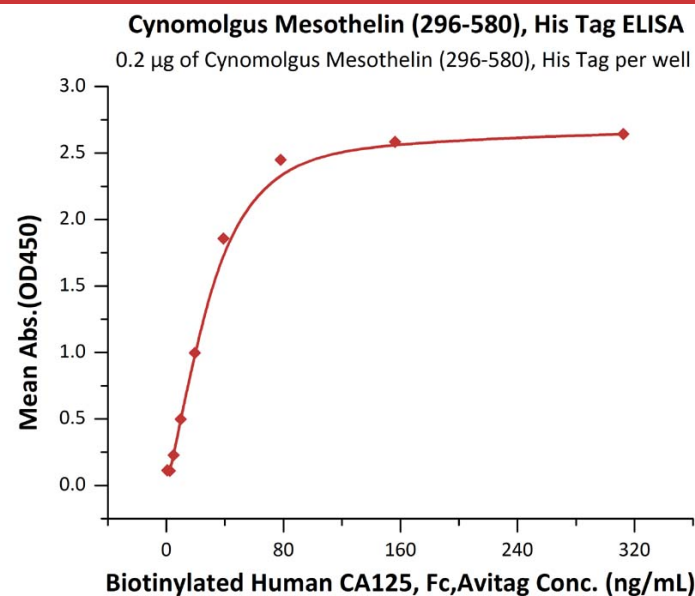
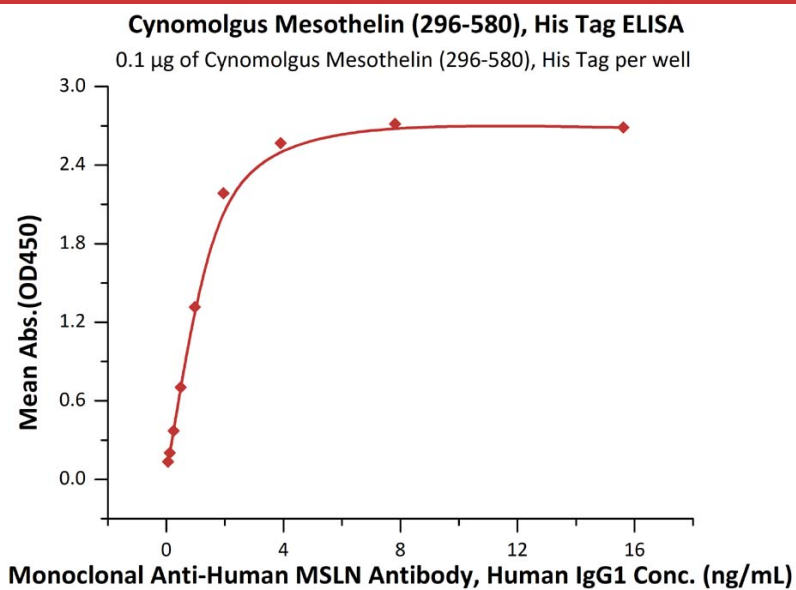
SDS-PAGE

Cynomolgus Mesothelin (296-580), His Tag on SDS-PAGE under reducing (R) condition. The gel was stained with Coomassie Blue. The purity of the protein is greater than 95%.

Bioactivity-ELISA**SEC-MALS**

The purity of Cynomolgus Mesothelin (296-580), His Tag (Cat. No. MSN-C52H6) is more than 90% and the molecular weight of this protein is around 35-45 kDa verified by SEC-MALS.

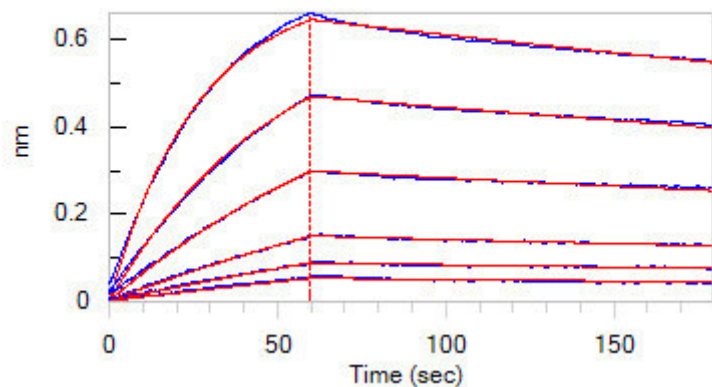
[Report](#)



Immobilized Cynomolgus Mesothelin (296-580), His Tag (Cat. No. MSN-C52H6) at 1 µg/mL (100 µL/well) can bind Monoclonal Anti-Human MSLN Antibody, Human IgG1 with a linear range of 0.06-2 ng/mL (QC tested).

Immobilized Cynomolgus Mesothelin (296-580), His Tag (Cat. No. MSN-C52H6) at 2 µg/mL (100 µL/well) can bind Biotinylated Human CA125, Fc,Avitag (Cat. No. CA5-H82F4) with a linear range of 2-39 ng/mL (Routinely tested).

Bioactivity-BLI



Loaded Monoclonal Anti-Human MSLN Antibody, Human IgG1 on Protein A Biosensor, can bind Cynomolgus Mesothelin (296-580), His Tag (Cat. No. MSN-C52H6) with an affinity constant of 3.8 nM as determined in BLI assay (ForteBio Octet Red96e) (Routinely tested).

Background

Mesothelin (MSLN) is also known as CAK1 antigen, Pre-pro-megakaryocyte-potentiating factor, which belongs to the mesothelin family. Mesothelin / MSLN can be proteolytically cleaved into the following two chains by a furin-like convertase: Megakaryocyte-potentiating factor (MPF) and the cleaved form of mesothelin. Both MPF and the cleaved form of mesothelin are N-glycosylated. Mesothelin / MSLN can interact with MUC16. The membrane-anchored forms of MSLN may play a role in cellular adhesion. MPF potentiates megakaryocyte colony formation in vitro.

Clinical and Translational Updates

Please contact us via TechSupport@acrobiosystems.com if you have any question on this product.