

**Synonym**

lymphocyte antigen 6 family member G6D,C6orf23,G6D,LY6-D,MEGT1,NG25

**Source**

Biotinylated Human LY6G6D Protein, His,Avitag(LYD-H82Q3) is expressed from human 293 cells (HEK293). It contains AA Asn 20 - Ser 104 (Accession # [O95868-1](#)).

**Molecular Characterization**

This protein carries a polyhistidine tag at the N-terminus, followed by an Avi tag (Avitag™)

The protein has a calculated MW of 12.8 kDa. The protein migrates as 17-18 kDa under reducing (R) condition (SDS-PAGE) due to glycosylation.

**Labeling**

*Biotinylation of this product is performed using Avitag™ technology. Briefly, the single lysine residue in the Avitag is enzymatically labeled with biotin.*

**Protein Ratio**

Passed as determined by the HABA assay / binding ELISA.

**Endotoxin**

Less than 1.0 EU per µg by the LAL method.

**Purity**

>90% as determined by SDS-PAGE.

**Formulation**

Lyophilized from 0.22 µm filtered solution in PBS, pH7.4 with trehalose as protectant.

Contact us for customized product form or formulation.

**Reconstitution**

Please see Certificate of Analysis for specific instructions.

*For best performance, we strongly recommend you to follow the reconstitution protocol provided in the CoA.*

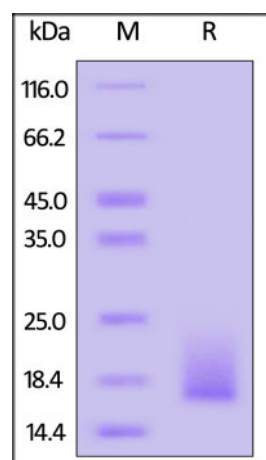
**Storage**

For long term storage, the product should be stored at lyophilized state at -20°C or lower.

*Please avoid repeated freeze-thaw cycles.*

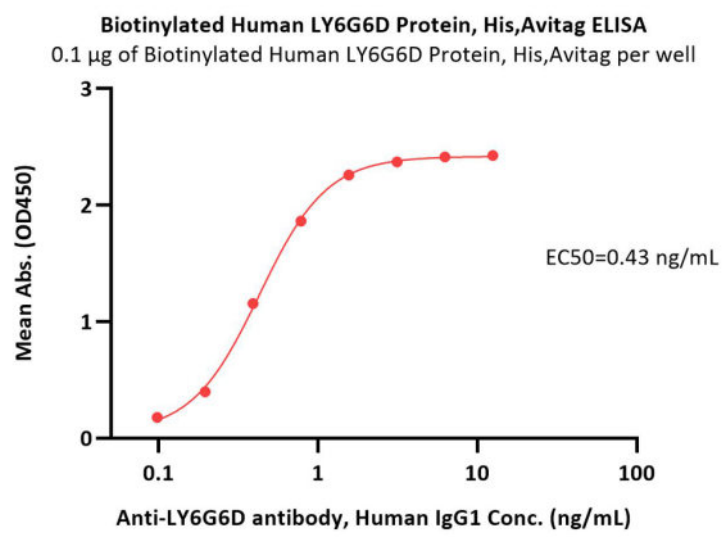
This product is stable after storage at:

- -20°C to -70°C for 12 months in lyophilized state;
- -70°C for 3 months under sterile conditions after reconstitution.

**SDS-PAGE**

Biotinylated Human LY6G6D Protein, His,Avitag on SDS-PAGE under reducing (R) condition. The gel was stained overnight with Coomassie Blue. The purity of the protein is greater than 90%.

**Bioactivity-ELISA**



Immobilized Biotinylated Human LY6G6D Protein, His,Avitag (Cat. No. LYD-H82Q3) at 1 µg/mL (100 µL/well) on streptavidin (Cat. No. STN-N5116) precoated (0.5 µg/well) plate can bind Anti-LY6G6D antibody, Human IgG1 with a linear range of 0.1-2 ng/mL (Routinely tested).

## Background

LY6G6D belongs to a cluster of leukocyte antigen-6 (LY6) genes located in the major histocompatibility complex (MHC) class III region on chromosome 6. Members of the LY6 superfamily typically contain 70 to 80 amino acids, including 8 to 10 cysteines. Most LY6 proteins are attached to the cell surface by a glycosylphosphatidylinositol (GPI) anchor that is directly involved in signal transduction.

## Clinical and Translational Updates

Please contact us via [TechSupport@acrobiosystems.com](mailto:TechSupport@acrobiosystems.com) if you have any question on this product.