



**Product Details**

Laminin 411 is a key component of the basement membrane and is involved in the regulation of cell differentiation. Laminin 411 fragment consists of the C-terminal end of the alpha 4, beta 1, and gamma 1 chains.

**Key parameter**

Purity (SDS PAGE) > 90%  
Endotoxin Test < 1.0 EU per µg

**Reconstitution**

Please see Certificate of Analysis for specific instructions.

*For best performance, we strongly recommend you to follow the reconstitution protocol provided in the CoA.*

**Formulation**

Lyophilized from 0.22 µm filtered solution in 50 mM Tris, 100 mM Glycine, 25 mM Arginine, 150 mM NaCl, pH7.5 with trehalose as protectant.

Contact us for customized product form or formulation.

**Storage**

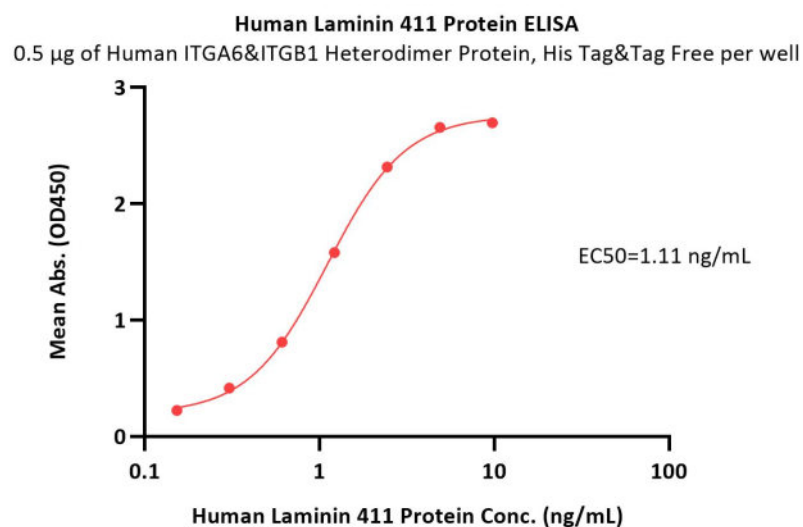
For long term storage, the product should be stored at lyophilized state at -20°C or lower.

*Please avoid repeated freeze-thaw cycles.*

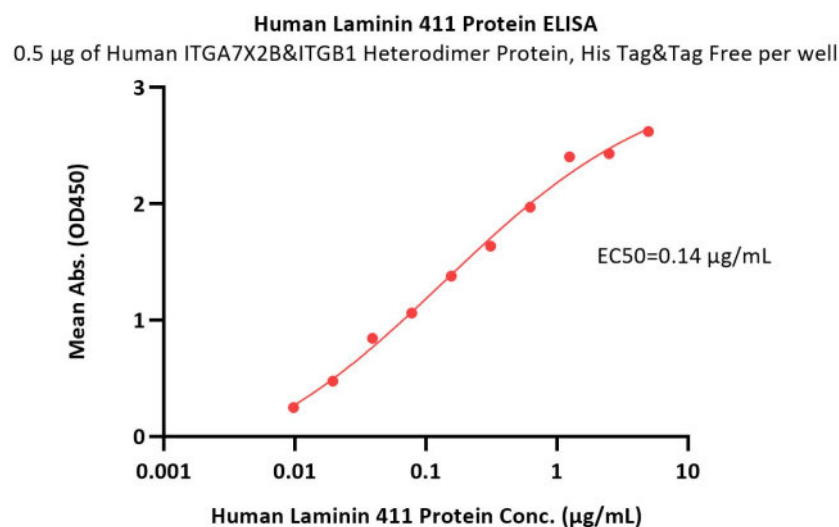
This product is stable after storage at:

- -20°C to -70°C for 12 months in lyophilized state;
- -70°C for 3 months under sterile conditions after reconstitution.

**Bioactivity-ELISA**



Immobilized Human ITGA6&ITGB1 Heterodimer Protein, His Tag&Tag Free (Cat. No. IT1-H52W7) at 5 µg/mL (100 µL/well) can bind Human Laminin 411 Protein (Cat. No. LAT-H5263) with a linear range of 0.1-2 ng/mL (QC tested).



Immobilized Human ITGA7X2B&ITGB1 Heterodimer Protein, His Tag&Tag Free (Cat. No. IT1-H52W8) at 5 µg/mL (100 µL/well) can bind Human Laminin 411 Protein (Cat. No. LAT-H5263) with a linear range of 0.01-0.625 µg/mL (Routinely tested).

**Bioactivity-SPR**

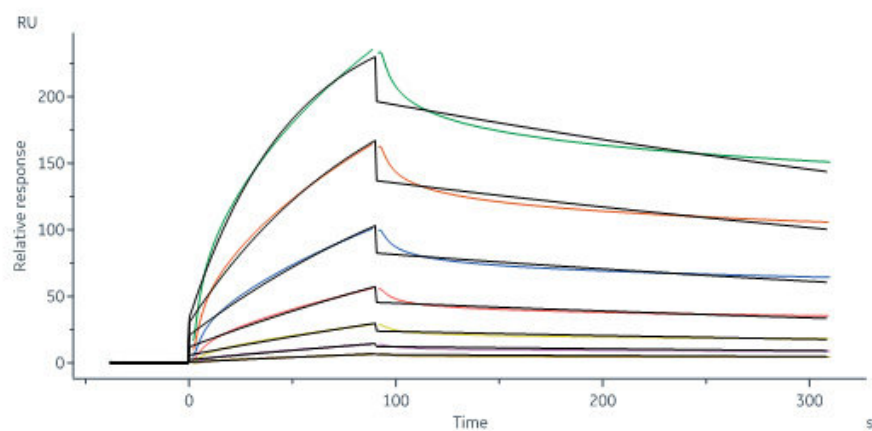


# Human Laminin 411 Protein

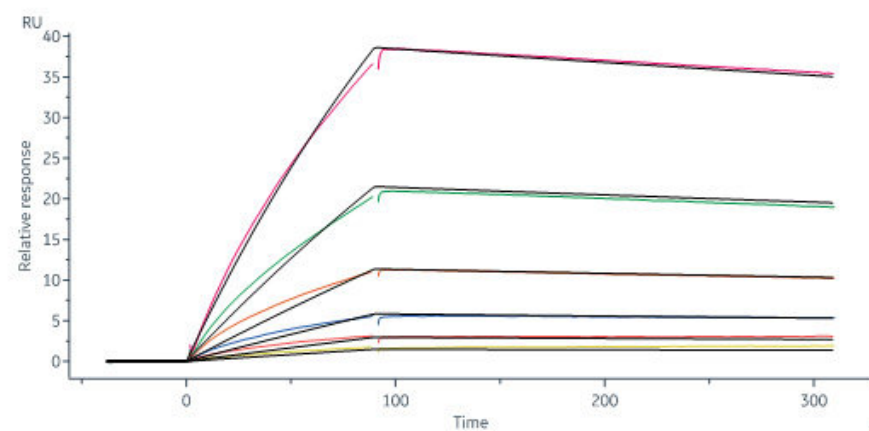
Catalog # LAT-H5263



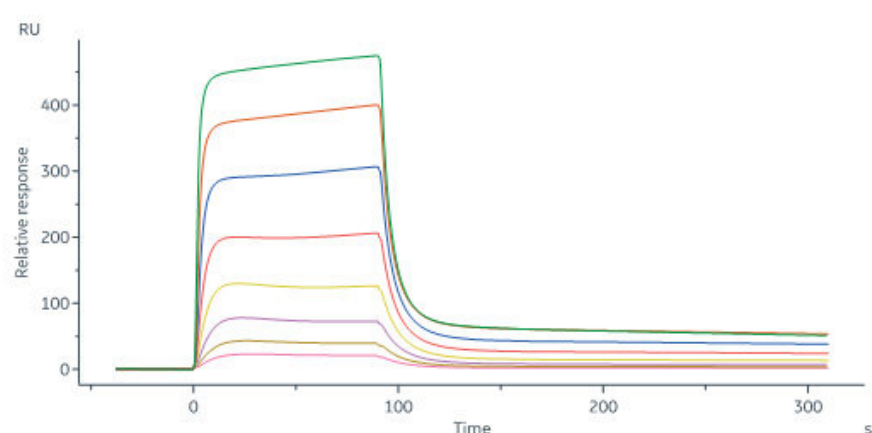
BIOSYSTEMS  
**Acro**



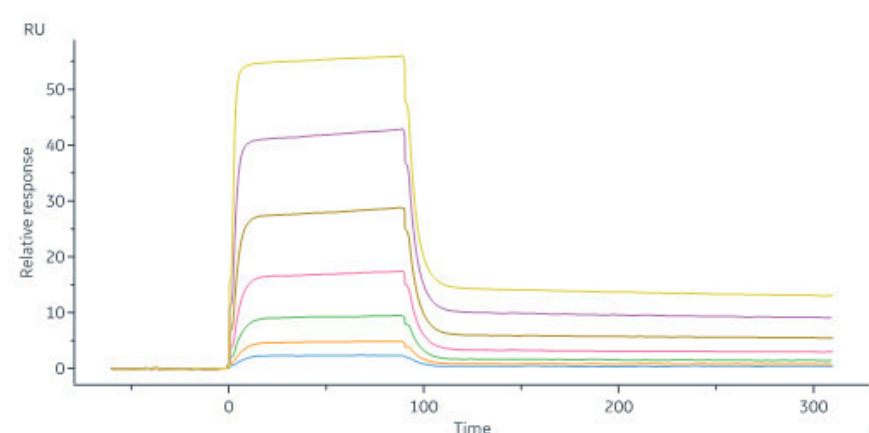
Human Laminin 411 Protein (Cat. No. LAT-H5263) immobilized on CM5 Chip can bind Human ITGA6&ITGB1 Heterodimer Protein, His Tag&Tag Free (Cat. No. IT1-H52W7) with an affinity constant of 29.3 nM as determined in a SPR assay (Biacore 8K) (QC tested).



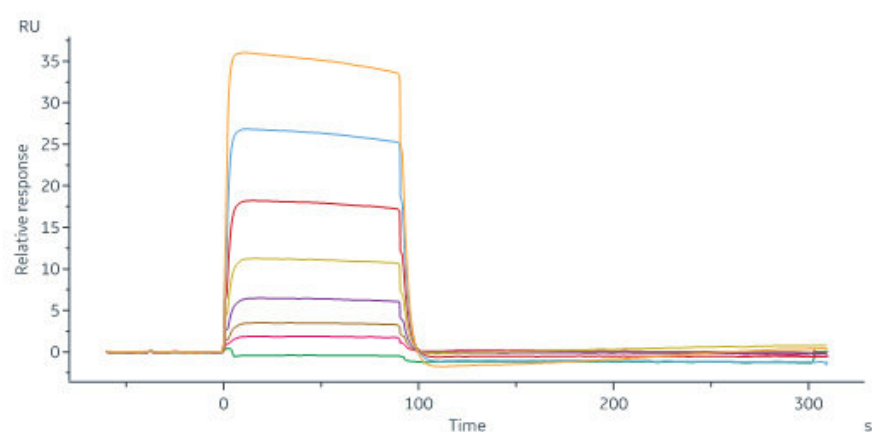
Human Laminin 411 Protein (Cat. No. LAT-H5263) immobilized on CM5 Chip can bind Human ITGA7X2B&ITGB1 Heterodimer Protein, His Tag&Tag Free (Cat. No. IT1-H52W8) with an affinity constant of 17.4 nM as determined in a SPR assay (Biacore 8K) (Routinely tested).



Human MCAM, His Tag (Cat. No. CD6-H5229) immobilized on CM5 Chip can bind Human Laminin 411 Protein (Cat. No. LAT-H5263) with an affinity constant of 0.115  $\mu$ M as determined in a SPR assay (Biacore 8K) (Routinely tested).



Human MCAM, His Tag (Cat. No. CD6-H5229) captured on CM5 chip via anti-His antibody can bind Human Laminin 411 Protein (Cat. No. LAT-H5263) with an affinity constant of 27.9 nM as determined in a SPR assay (Biacore 8K) (Routinely tested).



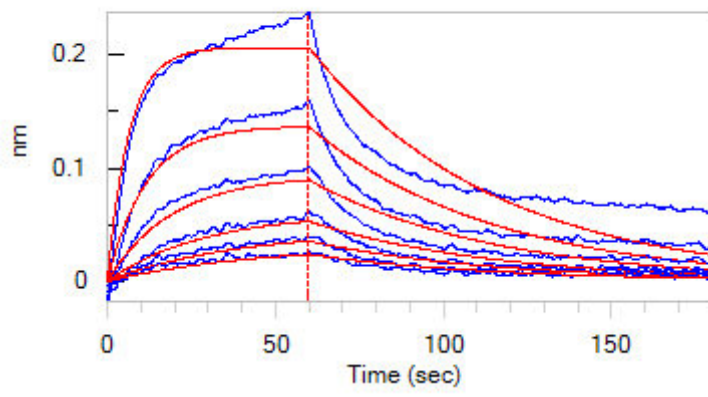
Human Laminin 411 Protein (Cat. No. LAT-H5263) captured on Protein A Chip can bind Human MCAM, His Tag (Cat. No. CD6-H5229) with an affinity constant of 107 nM as determined in a SPR assay (Biacore 8K) (Routinely tested).

## Bioactivity-BLI

Discounts, Gifts,  
and more!



[www.acrobiosystems.com](http://www.acrobiosystems.com)



Loaded Human Laminin 411 Protein (Cat. No. LAT-H5263) on Protein A Biosensor, can bind Human ITGA6&ITGB1 Heterodimer Protein, His Tag&Tag Free (Cat. No. IT1-H52W7) with an affinity constant of 26.9 nM as determined in BLI assay (ForteBio Octet Red96e) (QC tested).

## Clinical and Translational Updates

Discounts, Gifts,  
and more!

