



Product Details

Laminin-121 is one of the $\alpha 1$ chain containing laminins. The $\alpha 1$ chain is detected at the 2-cell stage of the pre-implantation mouse embryo and is subsequently expressed mainly in many epithelial tissues during organogenesis. Laminin-121 showed the highest affinity to $\alpha 6\beta 1$ and $\alpha 7\beta 1$ integrins and furthermore, laminin-121 most effectively supported neurite outgrowth.

Key parameter

Purity (SDS PAGE) > 90%
Mycoplasma Test Negative
Sterility Test Negative
Endotoxin Test < 0.01 EU per μ g

Reconstitution

Please see Certificate of Analysis for specific instructions.

For best performance, we strongly recommend you to follow the reconstitution protocol provided in the CoA.

Formulation

Lyophilized from 0.22 μ m filtered solution in 50 mM Tris 100 mM Glycine, 25 mM Arginine, 150 mM NaCl, pH7.5 with trehalose as protectant.

Contact us for customized product form or formulation.

Storage

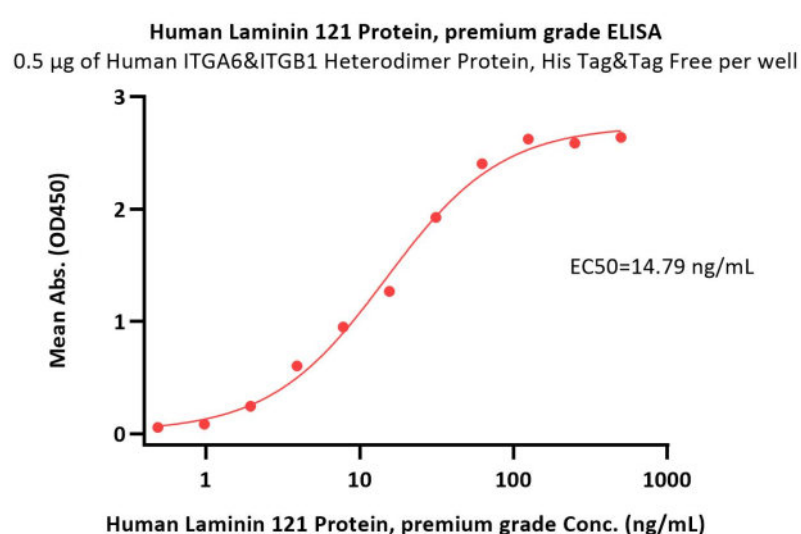
For long term storage, the product should be stored at lyophilized state at -20°C or lower.

Please avoid repeated freeze-thaw cycles.

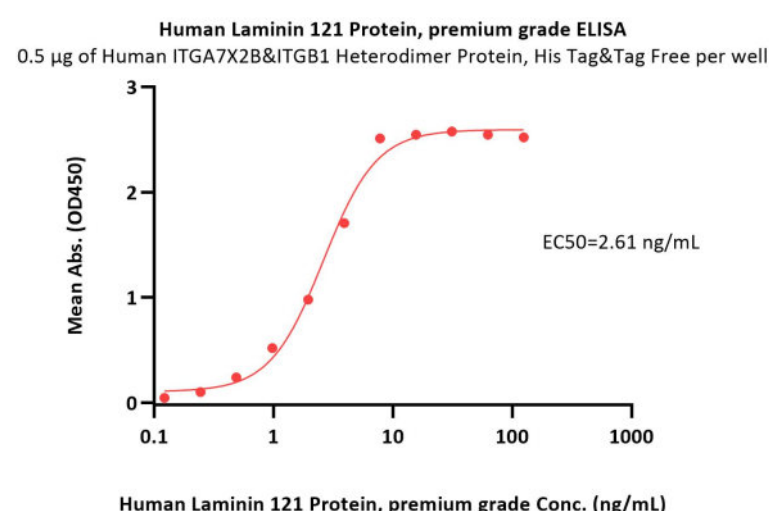
This product is stable after storage at:

- -20°C to -70°C for 12 months in lyophilized state;
- -70°C for 3 months under sterile conditions after reconstitution.

Bioactivity-ELISA



Immobilized Human ITGA6&ITGB1 Heterodimer Protein, His Tag&Tag Free (Cat. No. IT1-H52W7) at 5 μ g/mL (100 μ L/well) can bind Human Laminin 121 Protein, premium grade (Cat. No. LA1-H5261) with a linear range of 0.5-62.5 ng/mL (Routinely tested).



Immobilized Human ITGA7X2B&ITGB1 Heterodimer Protein, His Tag&Tag Free (Cat. No. IT1-H52W8) at 5 μ g/mL (100 μ L/well) can bind Human Laminin 121 Protein, premium grade (Cat. No. LA1-H5261) with a linear range of 0.2-8 ng/mL (Routinely tested).

Bioactivity-BLI

Discounts, Gifts,
and more!

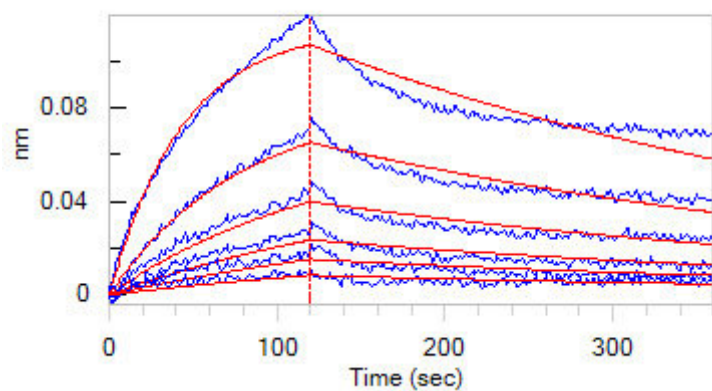


Human Laminin 121 Protein, premium grade

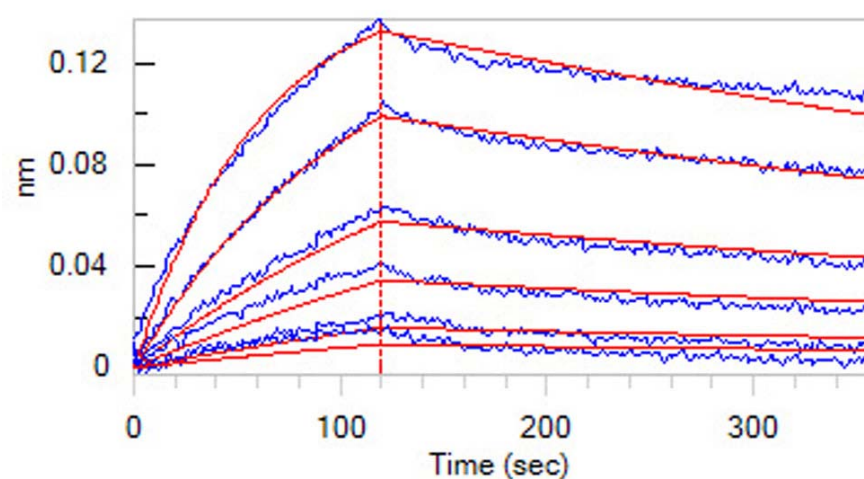
Catalog # LA1-H5261



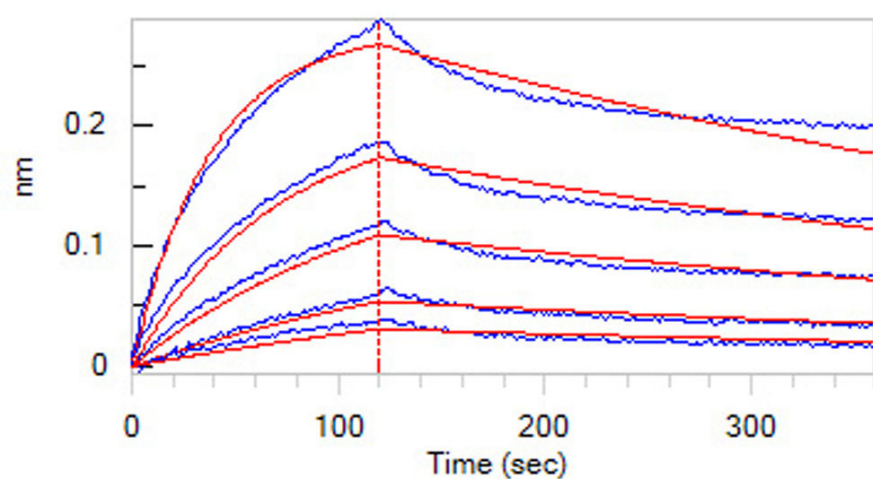
BIOSYSTEMS
Acro



Loaded Human Laminin 121 Protein, premium grade (Cat. No. LA1-H5261) on Protein A Biosensor, can bind Human ITGA7X2B&ITGB1 Heterodimer Protein, His Tag&Tag Free (Cat. No. IT1-H52W8) with an affinity constant of 6.23 nM as determined in BLI assay (ForteBio Octet Red96e) (QC tested).



Loaded Human Laminin 121 Protein, premium grade (Cat. No. LA1-H5261) on Protein A Biosensor, can bind Human ITGA6&ITGB1 Heterodimer Protein, His Tag&Tag Free (Cat. No. IT1-H52W7) with an affinity constant of 15.7 nM as determined in BLI assay (ForteBio Octet Red96e) (Routinely tested).



Loaded Human Laminin 121 Protein, premium grade (Cat. No. LA1-H5261) on Protein A Biosensor, can bind Human ITGA7X2B&ITGB1 Heterodimer Protein, His Tag&Tag Free (Cat. No. IT1-H52W8) with an affinity constant of 6.95 nM as determined in BLI assay (ForteBio Octet Red96e) (Routinely tested).

Clinical and Translational Updates

Discounts, Gifts,
and more!



» www.acrobiosystems.com