

Synonym

Interleukin-9 receptor, IL-9 receptor, IL-9R, CD129

Source

Human IL-9R, Fc Tag(ILR-H5251) is expressed from human 293 cells (HEK293). It contains AA Ser 41 - Pro 270 (Accession # [Q01113-1](#)).

Molecular Characterization

IL9R(Ser 41 - Pro 270) Q01113-1	Fc(Pro 100 - Lys 330) P01857
------------------------------------	---------------------------------

This protein carries a human IgG1 Fc tag at the C-terminus.

The protein has a calculated MW of 52.4 kDa. The protein migrates as 60-66 kDa under reducing (R) condition (SDS-PAGE) due to glycosylation.

Endotoxin

Less than 1.0 EU per µg by the LAL method.

Purity

>90% as determined by SDS-PAGE.

Formulation

Lyophilized from 0.22 µm filtered solution in PBS, pH7.4 with trehalose as protectant.

Contact us for customized product form or formulation.

Reconstitution

Please see Certificate of Analysis for specific instructions.

For best performance, we strongly recommend you to follow the reconstitution protocol provided in the CoA.

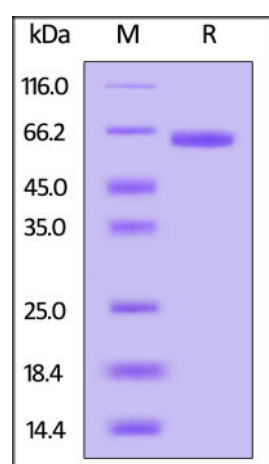
Storage

For long term storage, the product should be stored at lyophilized state at -20°C or lower.

Please avoid repeated freeze-thaw cycles.

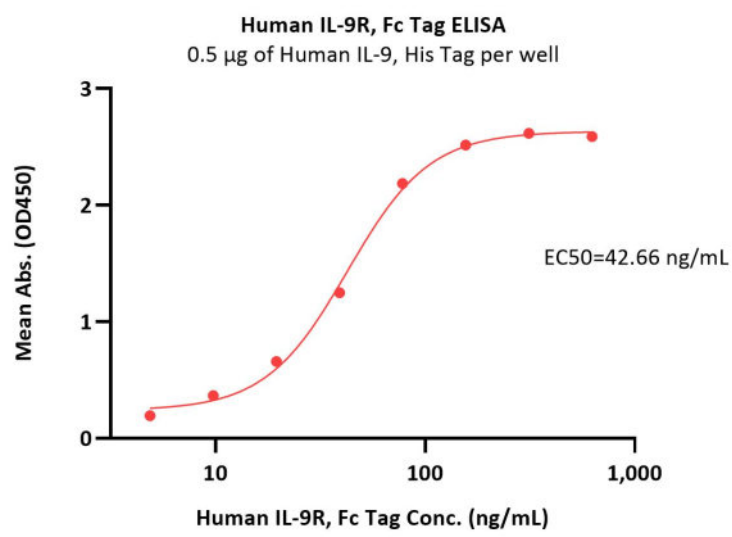
This product is stable after storage at:

- -20°C to -70°C for 12 months in lyophilized state;
- -70°C for 3 months under sterile conditions after reconstitution.

SDS-PAGE

Human IL-9R, Fc Tag on SDS-PAGE under reducing (R) condition. The gel was stained with Coomassie Blue. The purity of the protein is greater than 90%.

Bioactivity-ELISA



Immobilized Human IL-9 Protein, His Tag, premium grade (Cat. No. IL9-H52H9) at 5 µg/mL (100 µL/well) can bind Human IL-9R, Fc Tag (Cat. No. ILR-H5251) with a linear range of 5-78 ng/mL (QC tested).

Background

Interleukin 9 receptor (IL9R) also known as CD129 (Cluster of Differentiation 129) is a type I cytokine receptor. IL9R also denotes its human gene. The protein encoded by this gene is a cytokine receptor that specifically mediates the biological effects of interleukin 9 (IL9). The functional IL9 receptor complex requires this protein as well as the interleukin 2 receptor, gamma (IL2RG), a common gamma subunit shared by the receptors of many different cytokines. The ligand binding of this receptor leads to the activation of various JAK kinases and STAT proteins, which connect to different biologic responses.

Clinical and Translational Updates

Please contact us via TechSupport@acrobiosystems.com if you have any question on this product.