

Synonym

IL-2 R beta & IL-2 R alpha & IL-2 R gamma

Source

Cynomolgus IL-2RB&IL-2RA&IL-2RG Protein, His Tag&Twin-Strep Tag(ILG-C52W3) is expressed from human 293 cells (HEK293).

Molecular Characterization

Cynomolgus IL-2RB&IL-2RA&IL-2RG, His Tag&Twin-Strep Tag is produced by co-expression of IL-2RB and IL-2RA and IL-2RG, has a calculated MW of 30.1 kDa (IL-2RB) and 55.9 kDa (IL-2RA&IL-2RG). Subunit IL-2RB is fused with a his tag at the C-terminus and subunit IL-2RA&IL-2RG is fused with a Twin-Strep Tag at the C-terminus. The reducing (R) protein migrates as 37-44 kDa and 85-100 kDa respectively due to glycosylation.

Endotoxin

Less than 1.0 EU per µg by the LAL method.

Purity

>95% as determined by SDS-PAGE.

Formulation

Lyophilized from 0.22 µm filtered solution in PBS, pH7.4 with trehalose as protectant.

Contact us for customized product form or formulation.

Reconstitution

Please see Certificate of Analysis for specific instructions.

For best performance, we strongly recommend you to follow the reconstitution protocol provided in the CoA.

Storage

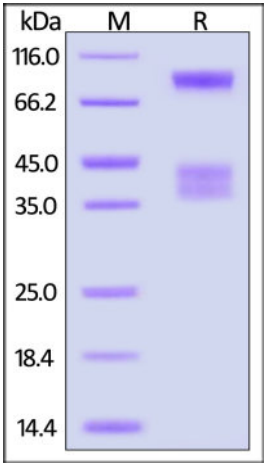
For long term storage, the product should be stored at lyophilized state at -20°C or lower.

Please avoid repeated freeze-thaw cycles.

This product is stable after storage at:

- 20°C to -70°C for 12 months in lyophilized state;
- 70°C for 3 months under sterile conditions after reconstitution.

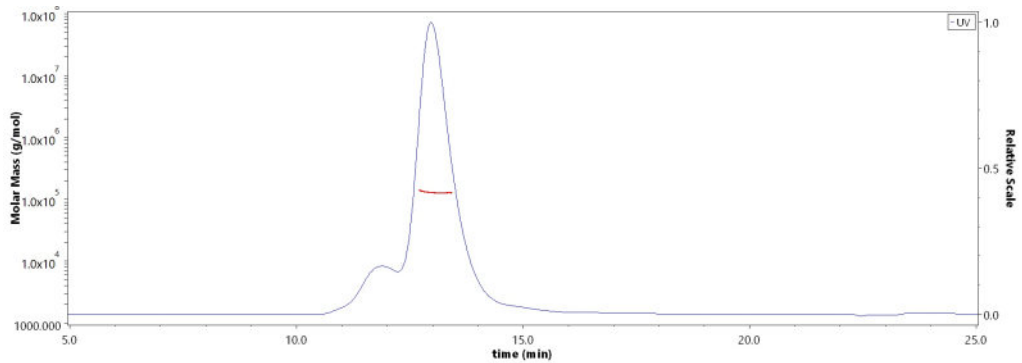
SDS-PAGE



Cynomolgus IL-2RB&IL-2RA&IL-2RG Protein, His Tag&Twin-Strep Tag on SDS-PAGE under reducing (R) condition. The gel was stained overnight with Coomassie Blue. The purity of the protein is greater than 95%.

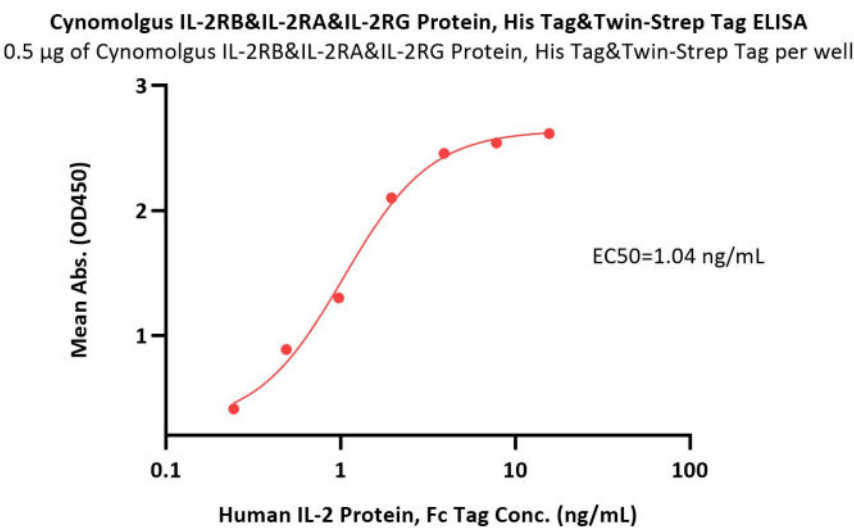
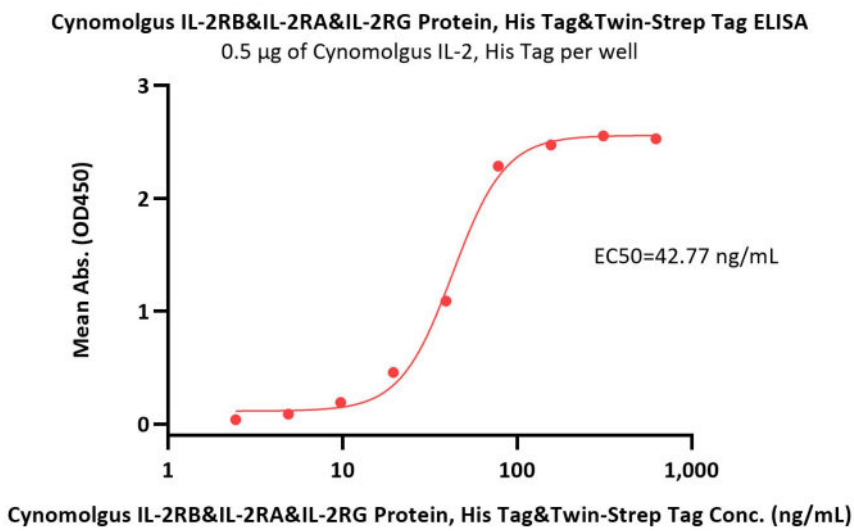
Bioactivity-ELISA

SEC-MALS



The purity of Cynomolgus IL-2RB&IL-2RA&IL-2RG Protein, His Tag&Twin-Strep Tag (Cat. No. ILG-C52W3) is more than 85% and the molecular weight of this protein is around 120-140 kDa verified by SEC-MALS.

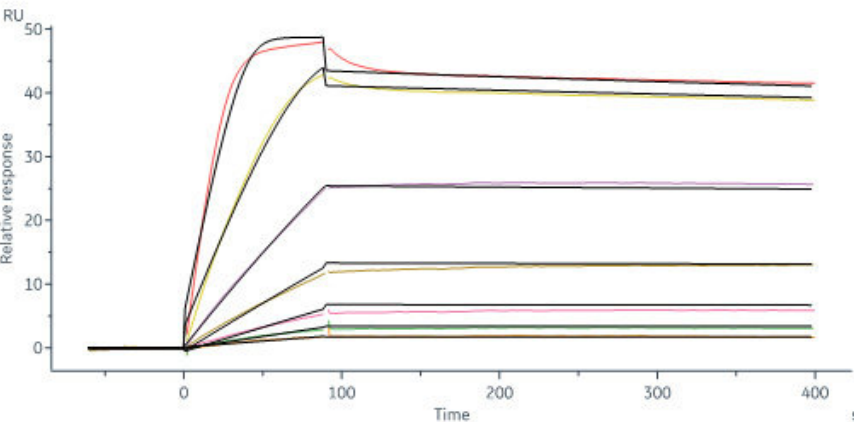
[Report](#)



Immobilized Cynomolgus IL-2, His Tag (Cat. No. IL2-C5249) at 5 µg/mL (100 µL/well) can bind Cynomolgus IL-2RB&IL-2RA&IL-2RG Protein, His Tag&Twin-Strep Tag (Cat. No. ILG-C52W3) with a linear range of 2-78 ng/mL (QC tested).

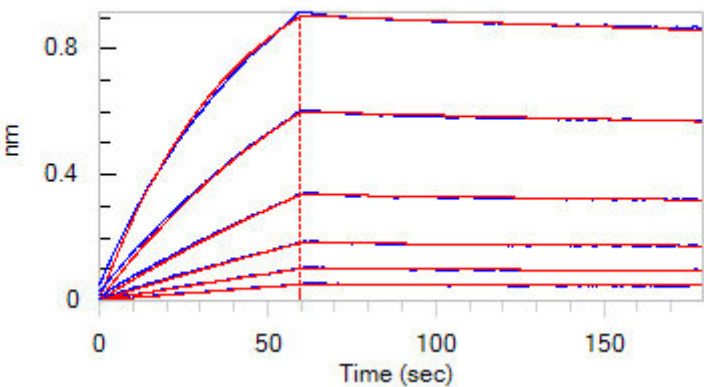
Immobilized Cynomolgus IL-2RB&IL-2RA&IL-2RG Protein, His Tag&Twin-Strep Tag (Cat. No. ILG-C52W3) at 5 µg/mL (100 µL/well) can bind Human IL-2 Protein, Fc Tag (Cat. No. IL2-H5269) with a linear range of 0.2-2 ng/mL (Routinely tested).

Bioactivity-SPR



Cynomolgus IL-2RB&IL-2RA&IL-2RG Protein, His Tag&Twin-Strep Tag (Cat. No. ILG-C52W3) captured on CM5 chip via anti-His antibody can bind Human IL-2, Tag Free with an affinity constant of 29.8 pM as determined in a SPR assay (Biacore 8K) (Routinely tested).

Bioactivity-BLI



Loaded Human IL-2 Protein, Fc Tag (Cat. No. IL2-H5269) on Protein A Biosensor, can bind Cynomolgus IL-2RB&IL-2RA&IL-2RG Protein, His Tag&Twin-Strep Tag (Cat. No. ILG-C52W3) with an affinity constant of 0.907 nM as determined in BLI assay (ForteBio Octet Red96e) (Routinely tested).

Background

Both Interleukin-2 receptor subunit beta and Interleukin-2 receptor subunit gamma are receptor for interleukin-2. Common subunit for the receptors for a variety of interleukins. Interacts with SHB upon interleukin stimulation. Probably in association with IL15RA, involved in the stimulation of neutrophil phagocytosis by IL15. This beta subunit is involved in receptor mediated endocytosis and transduces the mitogenic signals of IL2. IL2R exists in 3 different forms: a high affinity dimer, an intermediate affinity monomer (beta subunit), and a low affinity monomer (alpha subunit). The high and intermediate affinity forms also associate with a gamma subunit.

Clinical and Translational Updates

Please contact us via TechSupport@acrobiosystems.com if you have any question on this product.