

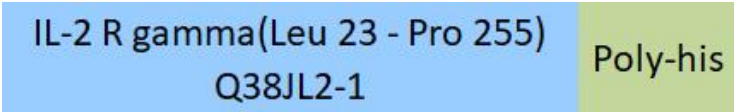
Synonym

IL2RG,CD132,CIDX,IMD4,P64,SCIDX,SCIDX1,gammaC

Source

Cynomolgus IL-2 R gamma, His Tag (ILG-C52H9) is expressed from human 293 cells (HEK293). It contains AA Leu 23 - Pro 255 (Accession # [Q38JL2-1](#)). Predicted N-terminus: Leu 23

Molecular Characterization



This protein carries a polyhistidine tag at the C-terminus.

The protein has a calculated MW of 29.4 kDa. The protein migrates as 50-60 kDa under reducing (R) condition (SDS-PAGE) due to glycosylation.

Endotoxin

Less than 1.0 EU per µg by the LAL method.

Purity

>95% as determined by SDS-PAGE.

Formulation

Lyophilized from 0.22 µm filtered solution in PBS, pH7.4. Normally trehalose is added as protectant before lyophilization.

Contact us for customized product form or formulation.

Reconstitution

Please see Certificate of Analysis for specific instructions.

For best performance, we strongly recommend you to follow the reconstitution protocol provided in the CoA.

Storage

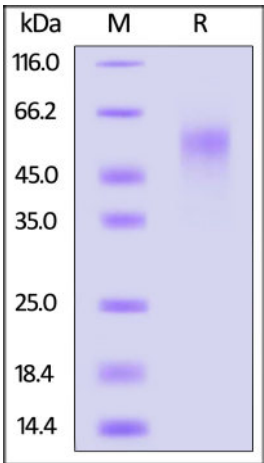
For long term storage, the product should be stored at lyophilized state at -20°C or lower.

Please avoid repeated freeze-thaw cycles.

This product is stable after storage at:

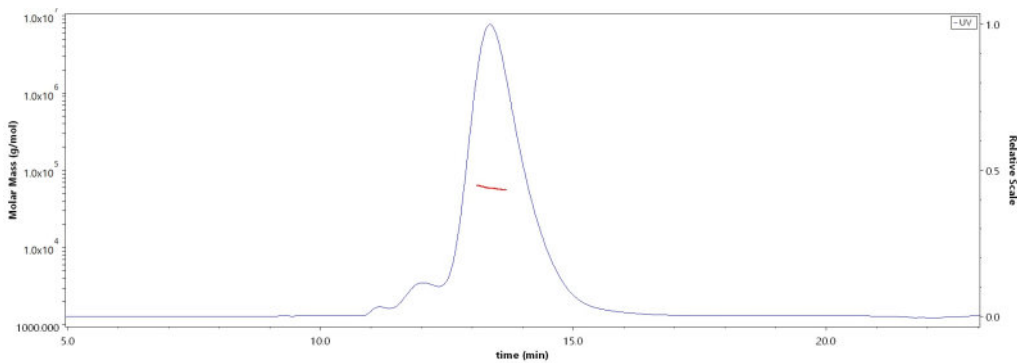
- -20°C to -70°C for 12 months in lyophilized state;
- -70°C for 3 months under sterile conditions after reconstitution.

SDS-PAGE



Cynomolgus IL-2 R gamma, His Tag on SDS-PAGE under reducing (R) condition. The gel was stained overnight with Coomassie Blue. The purity of the protein is greater than 95%.

SEC-MALS



The purity of Cynomolgus IL-2 R gamma, His Tag (Cat. No. ILG-C52H9) is more than 85% and the molecular weight of this protein is around 50-65 kDa verified by SEC-MALS.

[Report](#)

Background

IL-2R is a heterotrimeric protein binds and responds to the cytokine IL-2. Three distinct chains of IL-2R, termed as α , β and γ , which are non-covalently associated are identified. The α and β chains are involved in binding IL-2, while signal transduction following cytokine interaction is carried out by the γ chain, along with the β subunit. The α chain of the IL-2R can bind to the β chain before receptor interaction with IL-2. The γ chain alone has a very weak affinity for IL-2, but after the ligand is bound to the α/β heterodimer, the γ chain becomes recruited to the complex to form a very stable macromolecular quaternary ligand/receptor complex. Interleukin-2 receptor subunit gamma (IL2RG), also known as cytokine receptor common subunit gamma, CD antigen CD132, gammaC, p64, which belongs to the

type I cytokine receptor family or type 5 subfamily. IL2RG is located on the surface of immature blood-forming cells in bone marrow. Defects in IL2RG are the cause of severe combined immunodeficiency X-linked T-cell-negative/B-cell-positive/NK-cell-negative (XSCID).

Clinical and Translational Updates

Please contact us via TechSupport@acrobiosystems.com if you have any question on this product.