

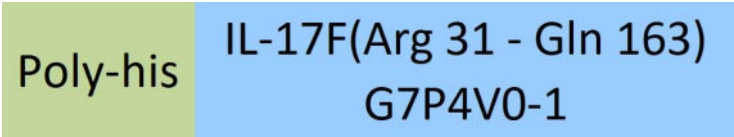
Synonym

IL-17F,Interleukin-17F,Cytokine ML-1

Source

Cynomolgus IL-17F, His Tag(ILF-C5243) is expressed from human 293 cells (HEK293). It contains AA Arg 31 - Gln 163 (Accession # [G7P4V0-1](#)).
Predicted N-terminus: His

Molecular Characterization



This protein carries a polyhistidine tag at the N-terminus
The protein has a calculated MW of 16.8 kDa. The protein migrates as 22-25 kDa under reducing (R) condition (SDS-PAGE) due to glycosylation.

Endotoxin

Less than 0.1 EU per µg by the LAL method.

Purity

>95% as determined by SDS-PAGE.

Formulation

Lyophilized from 0.22 µm filtered solution in PBS, pH7.4 with trehalose as protectant.
Contact us for customized product form or formulation.

Reconstitution

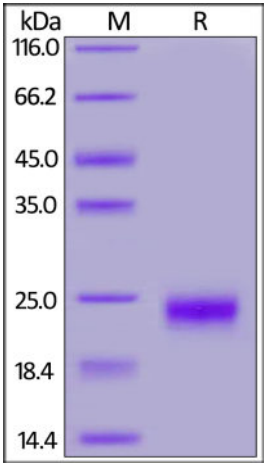
Please see Certificate of Analysis for specific instructions.
For best performance, we strongly recommend you to follow the reconstitution protocol provided in the CoA.

Storage

For long term storage, the product should be stored at lyophilized state at -20°C or lower.
Please avoid repeated freeze-thaw cycles.
This product is stable after storage at:

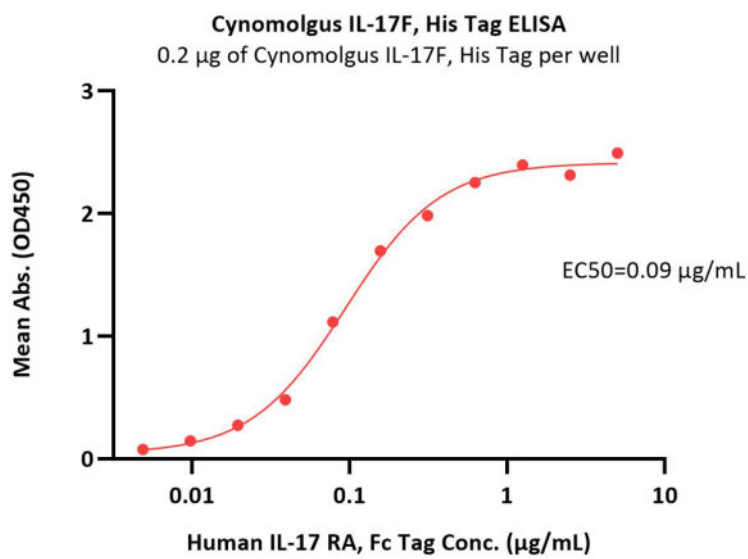
- 20°C to -70°C for 12 months in lyophilized state;
- 70°C for 3 months under sterile conditions after reconstitution.

SDS-PAGE

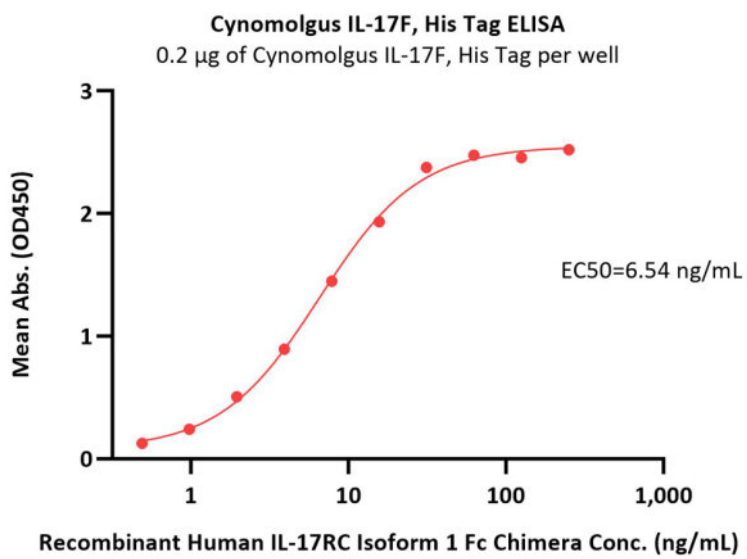


Cynomolgus IL-17F, His Tag on SDS-PAGE under reducing (R) condition. The gel was stained with Coomassie Blue. The purity of the protein is greater than 95%.

Bioactivity-ELISA

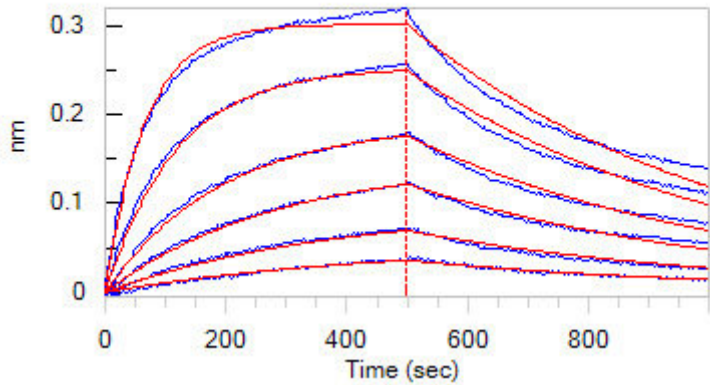


Immobilized Cynomolgus IL-17F, His Tag (Cat. No. ILF-C5243) at 2 µg/mL (100 µL/well) can bind Human IL-17 RA, Fc Tag (Cat. No. ILA-H5257) with a linear range of 0.005-0.313 µg/mL (QC tested).



Immobilized Cynomolgus IL-17F, His Tag (Cat. No. ILF-C5243) at 2 µg/mL (100 µL/well) can bind Recombinant Human IL-17RC Isoform 1 Fc Chimera with a linear range of 0.5-16 ng/mL (Routinely tested).

Bioactivity-BLI



Loaded Human IL-17 RA, Fc Tag (Cat. No. ILA-H5257) on Protein A Biosensor, can bind Cynomolgus IL-17F, His Tag (Cat. No. ILF-C5243) with an affinity constant of 279 nM as determined in BLI assay (ForteBio Octet Red96e) (Routinely tested).

Background

Interleukin-17F (IL17F) is also known as Interleukin-24 (IL24), Cytokine ML-1, is a secreted disulfide-linked homodimer which belongs to the IL-17 family. There are at least six members of the IL-17 family in humans and in mice: IL-17A, IL-17B, IL-17C, IL-17D, IL-17E (also called IL-25) and IL-17F (also called IL-24). IL-17 represents a family of structurally related cytokines that share a highly conserved C-terminal region but differ from one another in their N-terminal regions and in their distinct biological roles. IL-17F / IL-24 is expressed in activated, but not resting, CD4+ T-cells and activated monocytes. IL17F / Interleukin-24 stimulates the production of other cytokines such as IL-6, IL-8 and granulocyte colony-stimulating factor, and can regulate cartilage matrix turnover. IL17F / IL-24 stimulates PBMC and T-cell proliferation and Inhibits angiogenesis. Defects in IL17F are the cause of familial candidiasis type 6 (CANDF6).

Clinical and Translational Updates

Please contact us via TechSupport@acrobiosystems.com if you have any question on this product.