



### Product Details

This product is derived from *Streptococcus pyogenes* and expressed in *E. coli*, it is an IgG-specific cysteine protease that digests antibodies at a single amino acid site below the hinge, generating homogenous F(ab')<sub>2</sub> and Fc fragments.

### Application

- IdeS cleaves IgG to produce F(ab')<sub>2</sub> and Fc fragments at specific site.

### Unit Definition

One unit digests  $\geq 95\%$  of 1 μg human IgG when incubated in 10 mM sodium phosphate, 137 mM NaCl, 2.7 mM KCl, pH7.4 at 37°C for 30min.

### Quality Control

Less than 1.0 EU per μg by the LAL method.  $>95\%$  as determined by SDS-PAGE.

### Purity

$>95\%$  as determined by SDS-PAGE.

### Formulation

Lyophilized from 0.22 μm filtered solution in PBS, pH7.4 with trehalose as protectant.

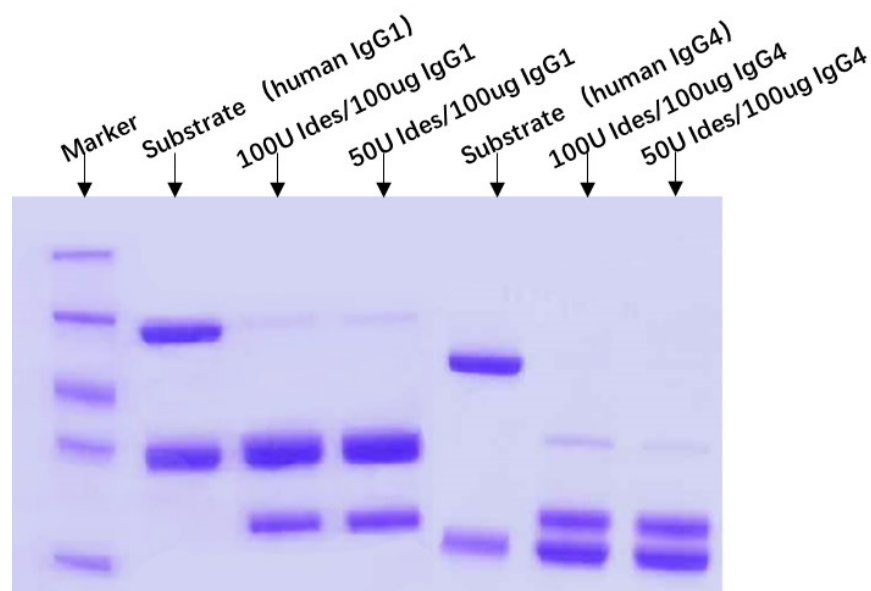
Contact us for customized product form or formulation.

### Storage

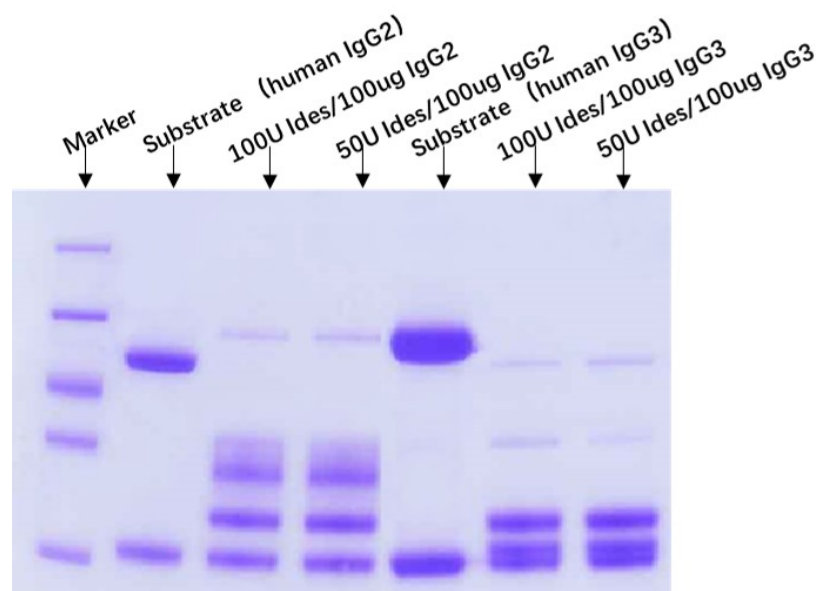
This product is stable after storage at:

- -20°C to -70°C for 12 months in lyophilized state;
- -70°C for 3 months under sterile conditions after reconstitution.

### Bioactivity



50/100unit IdeS digests  $\geq 95\%$  of 100 μg human IgG when incubated in PBS pH 7.4 at 37°C for 30min.



50/100unit IdeS digests  $\geq 95\%$  of 100 μg human IgG when incubated in PBS pH 7.4 at 37°C for 30min.

### Clinical and Translational Updates

Please contact us via [TechSupport@acrobiosystems.com](mailto:TechSupport@acrobiosystems.com) if you have any question on this product.

Discounts, Gifts,  
and more!

