



### Synonym

HLA-DRA1\*0101 & HLA-DRB1\*1101 & CLIP (PVSKMRMATPLLMQA)

### Source

Biotinylated Human HLA-DRA1\*01:01&HLA-DRB1\*11:01&CLIP (PVSKMRMATPLLMQA) Complex Protein(HLP-H82Ed) is expressed from human 293 cells (HEK293). It contains AA Ile 26 - Glu 216 (HLA-DRA1\*01:01) & Gly 30 - Lys 227 (HLA-DRB1\*11:01) & PVSKMRMATPLLMQA peptide (Accession # [CAI2388006.1](#) (HLA-DRA1\*01:01) & [CAI2388099.1](#) (HLA-DRB1\*11:01) & PVSKMRMATPLLMQA).

Predicted N-terminus: Ile 26 & Gly 30

### Molecular Characterization

Biotinylated Human HLA-DRA1\*01:01&HLA-DRB1\*11:01&CLIP (PVSKMRMATPLLMQA) Complex Protein is produced by co-expression of HLA-DRA1 and HLA-DRB1 loaded with CLIP peptide.

This protein carries a polyhistidine tag at the C-terminus, followed by an Avi tag (Avitag™).

The protein has a calculated MW of 29.2 kDa and 29.2 kDa. The protein migrates as 38-42 kDa and 34-37 kDa when calibrated against [Star Ribbon Pre-stained Protein Marker](#) under reducing (R) condition (SDS-PAGE) due to glycosylation.

### Labeling

*Biotinylation of this product is performed using Avitag™ technology. Briefly, the single lysine residue in the Avitag is enzymatically labeled with biotin.*

### Protein Ratio

Passed as determined by the HABA assay / binding ELISA.

### Endotoxin

Less than 1.0 EU per µg by the LAL method.

### Purity

>95% as determined by SDS-PAGE.

### Formulation

Lyophilized from 0.22 µm filtered solution in PBS, pH7.4 with trehalose as protectant.

Contact us for customized product form or formulation.

### Reconstitution

Please see Certificate of Analysis for specific instructions.

*For best performance, we strongly recommend you to follow the reconstitution protocol provided in the CoA.*

### Storage

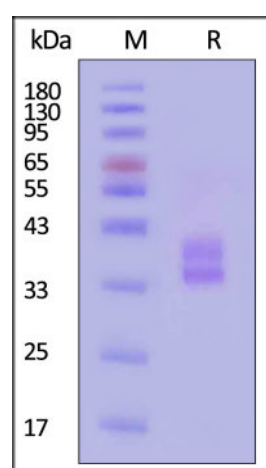
For long term storage, the product should be stored at lyophilized state at -20°C or lower.

*Please avoid repeated freeze-thaw cycles.*

This product is stable after storage at:

- -20°C to -70°C for 12 months in lyophilized state;
- -70°C for 3 months under sterile conditions after reconstitution.

### SDS-PAGE



Discounts, Gifts,  
and more!



# Biotinylated Human HLA-DRA1\*01:01&HLA-DRB1\*11:01&CLIP (PVSKMRMATPLLMQA) Complex Protein (Monomer)

Catalog # HLP-H82Ed

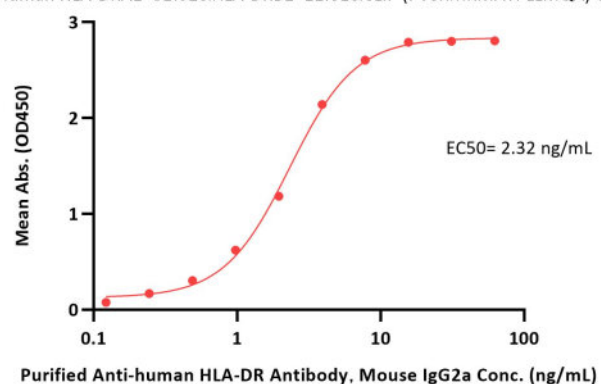


BIOSYSTEMS  
**Acro**

Biotinylated Human HLA-DRA1\*01:01&HLA-DRB1\*11:01&CLIP (PVSKMRMATPLLMQA) Complex Protein on SDS-PAGE under reducing (R) condition. The gel was stained with Coomassie Blue. The purity of the protein is greater than 95% (With [Star Ribbon Pre-stained Protein Marker](#)).

## Bioactivity-ELISA

**Biotinylated Human HLA-DRA1\*01:01&HLA-DRB1\*11:01&CLIP (PVSKMRMATPLLMQA) Complex Protein ELISA**  
0.1 µg of Biotinylated Human HLA-DRA1\*01:01&HLA-DRB1\*11:01&CLIP (PVSKMRMATPLLMQA) Complex Protein per well



Immobilized Biotinylated Human HLA-DRA1\*01:01&HLA-DRB1\*11:01&CLIP (PVSKMRMATPLLMQA) Complex Protein (Cat. No. HLP-H82Ed) at 1 µg/mL (100 µL/well) on streptavidin (Cat. No. STN-N5116) precoated (0.5 µg/well) plate can bind Purified Anti-human HLA-DR Antibody, Mouse IgG2a with a linear range of 0.1-4 ng/mL (QC tested).

## Clinical and Translational Updates

Discounts, Gifts,  
and more!



[www.acrobiosystems.com](http://www.acrobiosystems.com)

3/5/2024