



Source

PE-Labeled Monoclonal Anti-HLA class I Antibody, Human IgG1 (W632) is a chimeric monoclonal antibody recombinantly expressed from human 293 cells (HEK293), which combines the variable region of a mouse monoclonal antibody with human IgG1 constant domain.

Isotype

Human IgG1 | Human Kappa

Specificity

This product is a specific antibody specifically reacts with HLA class I.

Conjugate

PE

Excitation Wavelength: 488 nm / 561 nm

Emission Wavelength: 575 nm

Application

FACS

Formulation

Lyophilized from 0.22 μ m filtered solution in PBS, 0.2% BSA, pH7.4 with trehalose as protectant.

Contact us for customized product form or formulation.

Reconstitution

Please see Certificate of Analysis for specific instructions.

For best performance, we strongly recommend you to follow the reconstitution protocol provided in the CoA.

Storage

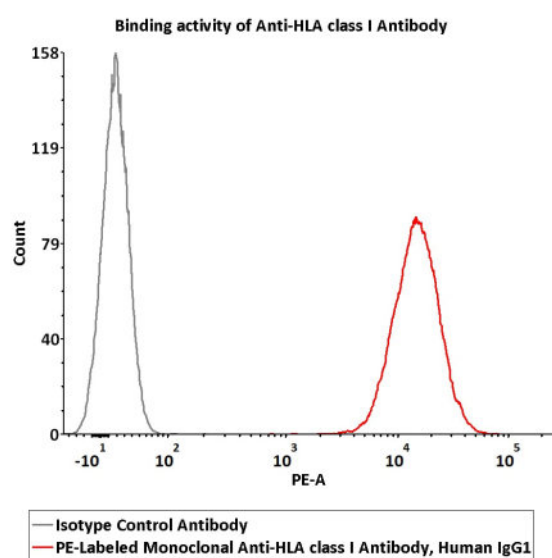
For long term storage, the product should be stored at lyophilized state at -20°C or lower.

Please avoid repeated freeze-thaw cycles.

This product is stable after storage at:

- -20 to -70°C for 12 months in lyophilized state from date of receipt;
- -70°C for 12 months under sterile conditions after reconstitution.

Bioactivity-FACS



Flow cytometric analysis of Jurkat cells staining with PE-Labeled Monoclonal Anti-HLA class I Antibody, Human IgG1 (W632) (Cat. No. HLI-CFM597) at 1:50 dilution (2 μ L of the antibody stock solution corresponds to labeling of 1×10^6 cells in a final volume of 100 μ L), compared with isotype control antibody. PE signal was used to evaluate the binding activity (QC tested).

Background

The W6/32 monoclonal antibody reacts with the human major histocompatibility complex (MHC) class I, HLA-A, B, C. MHC class I antigens associated with beta 2-microglobulin are expressed by all human nucleated cells and are central in cell-mediated immune response and tumor surveillance. W6/32 mAb recognizes a non-

Discounts, Gifts,
and more!



PE-Labeled Monoclonal Anti-HLA class I Antibody, Human IgG1 (W632)

Catalog # HLI-CFM597



polymorphic epitope shared among products of the HLA-A, B, and C loci and immunoprecipitates both 43 kDa and 11-12 kDa chains.

Clinical and Translational Updates

Discounts, Gifts,
and more!



www.acrobiosystems.com