



Source

Biotinylated Anti-HLA class I Antibody, Human IgG1 (W632) is a chimeric monoclonal antibody recombinantly expressed from human 293 cells (HEK293), which combines the variable region of a mouse monoclonal antibody with human IgG1 constant domain. The mouse monoclonal antibody is produced from a hybridoma resulting from fusion of SP2/0 myeloma and B-lymphocytes obtained from a mouse immunized with HLA class I.

Isotype

Human IgG1 | Human Kappa

Specificity

This product is a specific antibody specifically reacts with HLA class I.

Application

ELISA

Purity

>90% as determined by SDS-PAGE.

Endotoxin

Less than 1.0 EU per μg by the LAL method.

Formulation

Lyophilized from 0.22 μm filtered solution in PBS, pH7.4 with trehalose as protectant.

Contact us for customized product form or formulation.

Reconstitution

Please see Certificate of Analysis for specific instructions.

For best performance, we strongly recommend you to follow the reconstitution protocol provided in the CoA.

Storage

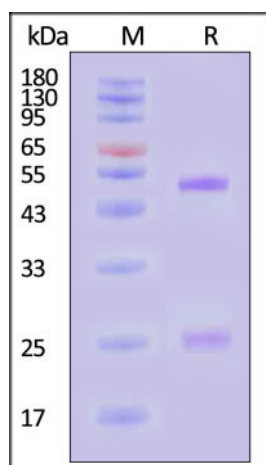
For long term storage, the product should be stored at lyophilized state at -20°C or lower.

Please avoid repeated freeze-thaw cycles.

This product is stable after storage at:

- -20 to -70°C for 12 months in lyophilized state from date of receipt;
- -70°C for 3 months under sterile conditions after reconstitution.

SDS-PAGE



Biotinylated Anti-HLA class I Antibody, Human IgG1 (W632) on SDS-PAGE under reducing (R) condition. The gel was stained with Coomassie Blue. The purity of the protein is greater than 90% (With [Star Ribbon Pre-stained Protein Marker](#)).

Bioactivity-Elisa

Discounts, Gifts,
and more!

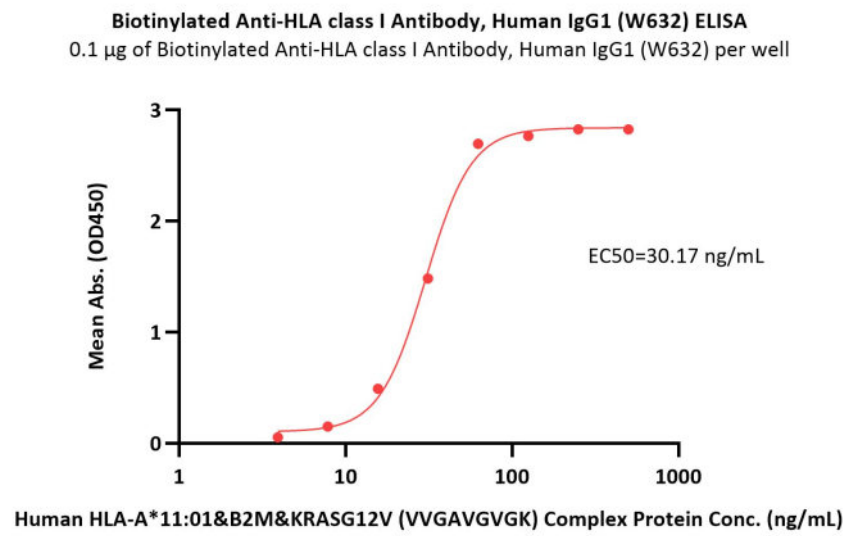


Biotinylated Anti-HLA class I Antibody, Human IgG1 (W632)

Catalog # HLI-BM597



BIOSYSTEMS
Acro



Immobilized Biotinylated Anti-HLA class I Antibody, Human IgG1 (W632) (Cat. No. HLI-BM597) at 1 µg/mL (100 µL/well) on streptavidin (Cat. No. STN-N5116) precoated (0.5 µg/well) plate can bind Human HLA-A*11:01&B2M&KRASG12V (VVGAVGVGK) Complex Protein (Cat. No. HLV-H52H3) with a linear range of 4-63 ng/mL (QC tested).

Background

The W6/32 monoclonal antibody reacts with the human major histocompatibility complex (MHC) class I, HLA-A, B, C. MHC class I antigens associated with beta 2-microglobulin are expressed by all human nucleated cells and are central in cell-mediated immune response and tumor surveillance. W6/32 mAb recognizes a non-polymorphic epitope shared among products of the HLA-A, B, and C loci and immunoprecipitates both 43 kDa and 11-12 kDa chains.

Clinical and Translational Updates

Discounts, Gifts,
and more!



➤ www.acrobiosystems.com

4/11/2024