



Source

Unconjugated Human HLA-A*24:02&B2M&EBV BRLF1 (TYPVLEEMF) Complex Protein(HLF-H52E5) is expressed from human 293 cells (HEK293). It contains AA Gly 25 - Thr 305 (HLA-A*24:02) & Ile 21 - Met 119 (B2M) & TYPVLEEMF peptide (Accession # [AAA59600.1](#) (HLA-A*24:02) & [P61769](#) (B2M) & TYPVLEEMF).

Predicted N-terminus: Gly 25 & Ile 21

Molecular Characterization

Unconjugated Human HLA-A*24:02&B2M&EBV BRLF1 (TYPVLEEMF) Complex Protein is produced by co-expression of HLA and B2M loaded with EBV BRLF1 peptide.

This protein carries a polyhistidine tag at the C-terminus, followed by an Avi tag (Avitag™), and it is not biotinylated.

The protein has a calculated MW of 35.8 kDa and 11.7 kDa. The protein migrates as 39-42 kDa and 10 kDa when calibrated against [Star Ribbon Pre-stained Protein Marker](#) under reducing (R) condition (SDS-PAGE) due to glycosylation.

Endotoxin

Less than 1.0 EU per µg by the LAL method.

Purity

>90% as determined by SDS-PAGE.

>90% as determined by SEC-MALS.

Formulation

Lyophilized from 0.22 µm filtered solution in PBS, pH7.4 with trehalose as protectant.

Contact us for customized product form or formulation.

Reconstitution

Please see Certificate of Analysis for specific instructions.

For best performance, we strongly recommend you to follow the reconstitution protocol provided in the CoA.

Storage

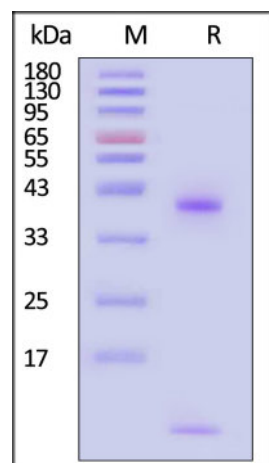
For long term storage, the product should be stored at lyophilized state at -20°C or lower.

Please avoid repeated freeze-thaw cycles.

This product is stable after storage at:

- -20°C to -70°C for 12 months in lyophilized state;
- -70°C for 3 months under sterile conditions after reconstitution.

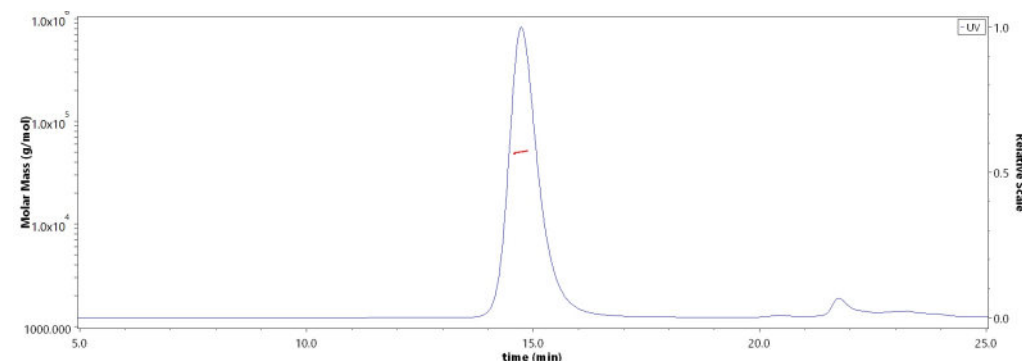
SDS-PAGE



Unconjugated Human HLA-A*24:02&B2M&EBV BRLF1 (TYPVLEEMF) Complex Protein on SDS-PAGE under reducing (R) condition. The gel was stained with Coomassie Blue. The purity of the protein is greater than 90% (With [Star Ribbon Pre-stained Protein Marker](#)).

Bioactivity-ELISA

SEC-MALS



The purity of Unconjugated Human HLA-A*24:02&B2M&EBV BRLF1 (TYPVLEEMF) Complex Protein (Cat. No. HLF-H52E5) is more than 90% and the molecular weight of this protein is around 45-60 kDa verified by SEC-MALS.

[Report](#)

Discounts, Gifts,
and more!



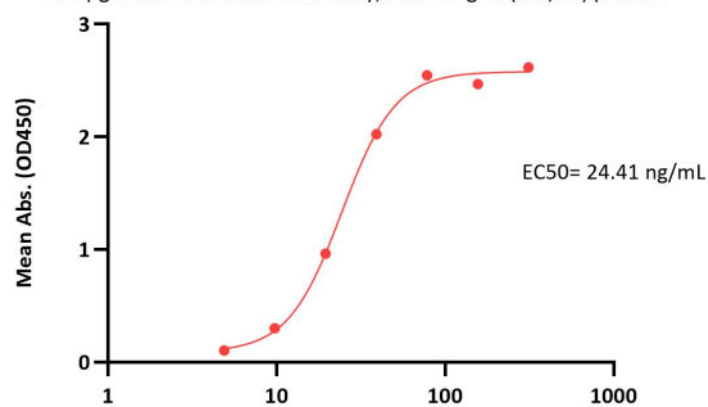
Unconjugated Human HLA-A*24:02&B2M&EBV BRLF1 (TYPVLEEMF) Complex Protein (Monomer, MALS verified)



Catalog # HLF-H52E5

Unconjugated Human HLA-A*24:02&B2M&EBV BRLF1 (TYPVLEEMF) Complex Protein ELISA

0.1 μ g of Anti-HLA class I Antibody, Human IgG1 (W6/32) per well



Unconjugated Human HLA-A*24:02&B2M&EBV BRLF1 (TYPVLEEMF) Complex Protein Conc. (ng/mL)

Immobilized Anti-HLA class I Antibody, Human IgG1 (W6/32) at 1 μ g/mL (100 μ L/well) can bind Unconjugated Human HLA-A*24:02&B2M&EBV BRLF1 (TYPVLEEMF) Complex Protein (Cat. No. HLF-H52E5) with a linear range of 5-40 ng/mL (QC tested).

Clinical and Translational Updates

Discounts, Gifts,
and more!



www.acrobiosystems.com

3/8/2024