



Background

P16 is a member of the Ser/Thr protein kinase family. This protein is important for cell cycle G1 phase progression. The activity of this kinase is restricted to the G1-S phase, which is controlled by the regulatory subunits D-type cyclins and CDK inhibitor p16(INK4a). This kinase was shown to be responsible for the phosphorylation of retinoblastoma gene product (Rb). Mutations in this gene as well as in its related proteins including D-type cyclins, p16(INK4a) and Rb were all found to be associated with tumorigenesis of a variety of cancers.

Host Species

Rabbit

Clone

4A7

Application

IHC

Property

1: 1000

State

Liquid

Positive Control

Human Tonsil Tissue

Clonality

Monoclonal

Synonym

P16, CDK4

Research Field

Cancer Drug Targets

Source

Rabbit

Isotype

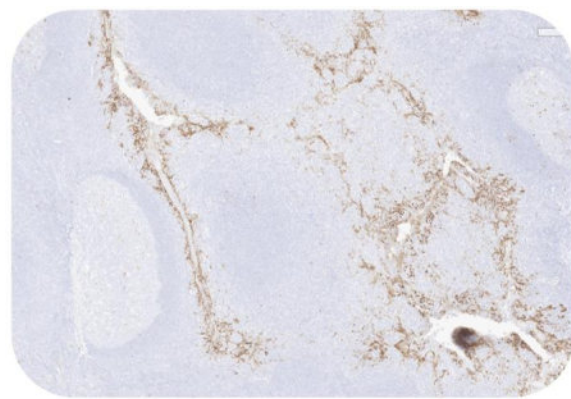
IgG

Storage

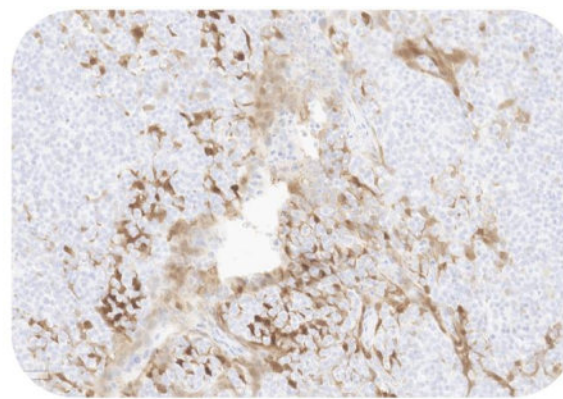
Shipped at 4°C. Store at +4°C short term (1-2 weeks). Upon delivery aliquot. Store at -20°C long term. Avoid freeze / thaw cycle.

Typical Data

Control Sample



Immunohistochemistry (Formalin/PFA-fixed paraffin-embedded sections) -Recombinant Monoclonal Anti-P16 Antibody, Rabbit (4A7) (HGS-S315)
Human Tonsil Tissue, 4X



Immunohistochemistry (Formalin/PFA-fixed paraffin-embedded sections) -Recombinant Monoclonal Anti-P16 Antibody, Rabbit (4A7) (HGS-S315)
Human Tonsil Tissue, 20X

Immunohistochemical analysis of paraffin embedded Human Tonsil Tissue labelled with HGS-S315 at 1/1000 dilution. Perform heat mediated antigen retrieval with Tris/EDTA buffer pH 9.0 before commencing with IHC staining protocol.

Cancer Sample

Discounts, Gifts,
and more!

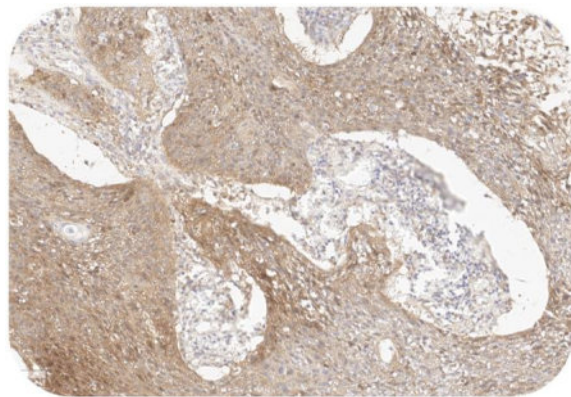


Recombinant Monoclonal Anti-P16 Antibody, Rabbit (4A7)

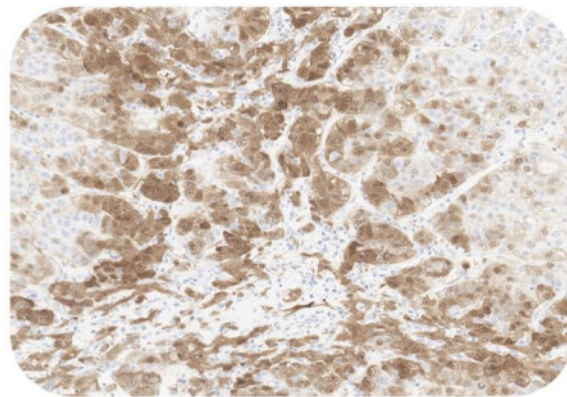
Catalog # HGS-S315



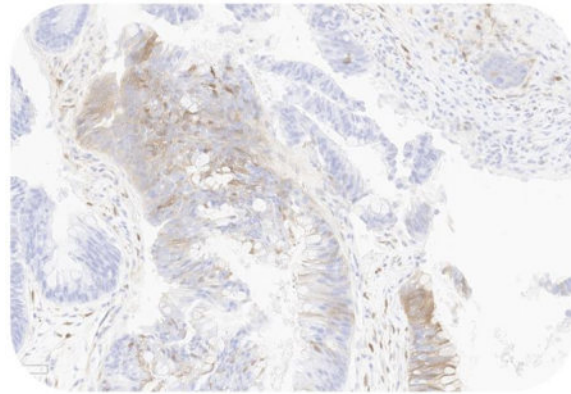
BIOSYSTEMS
Acro



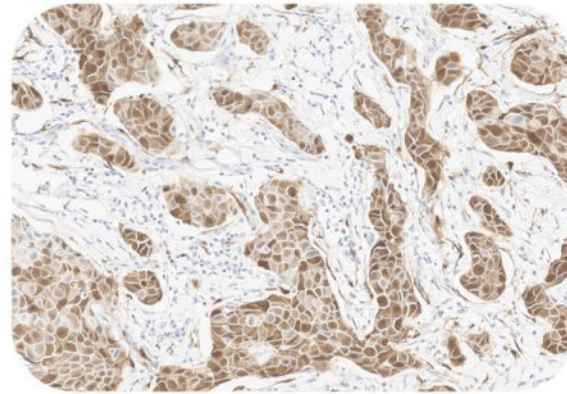
Immunohistochemistry (Formalin/PFA-fixed paraffin-embedded sections) -Recombinant Monoclonal Anti-P16 Antibody, Rabbit (4A7) (HGS-S315)
Human Cervical Cancer, 20X



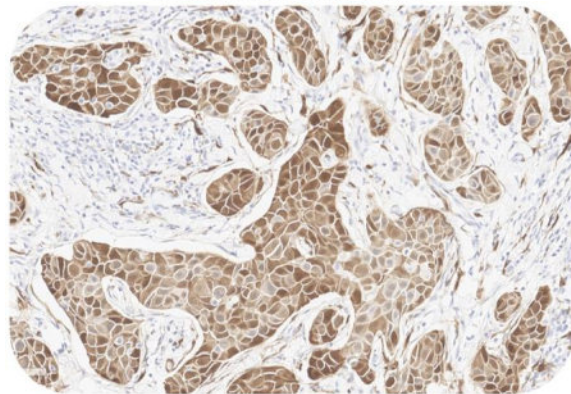
Immunohistochemistry (Formalin/PFA-fixed paraffin-embedded sections) -Recombinant Monoclonal Anti-P16 Antibody, Rabbit (4A7) (HGS-S315)
Human Liver Cancer, 20X



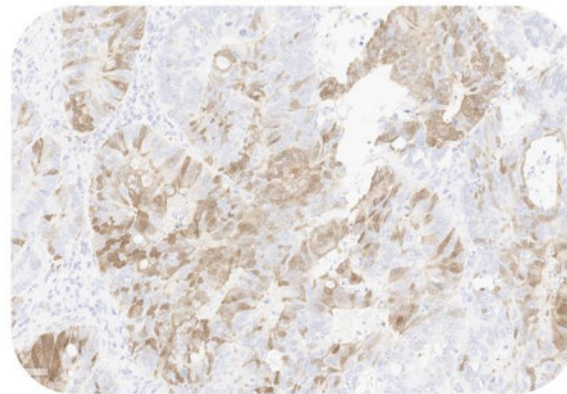
Immunohistochemistry (Formalin/PFA-fixed paraffin-embedded sections) -Recombinant Monoclonal Anti-P16 Antibody, Rabbit (4A7) (HGS-S315)
Human Ovarian Cancer, 20X



Immunohistochemistry (Formalin/PFA-fixed paraffin-embedded sections) -Recombinant Monoclonal Anti-P16 Antibody, Rabbit (4A7) (HGS-S315)
Human Breast Cancer, 20X



Immunohistochemistry (Formalin/PFA-fixed paraffin-embedded sections) -Recombinant Monoclonal Anti-P16 Antibody, Rabbit (4A7) (HGS-S315)
Human Breast Cancer, 20X



Immunohistochemistry (Formalin/PFA-fixed paraffin-embedded sections) -Recombinant Monoclonal Anti-P16 Antibody, Rabbit (4A7) (HGS-S315)
Human Colorectal Cancer, 20X

Immunohistochemical analysis of paraffin embedded human cancer tissue labelled with HGS-S315 at 1/1000 dilution.
Perform heat mediated antigen retrieval with Tris/EDTA buffer pH 9.0 before commencing with IHC staining protocol.

Clinical and Translational Updates

Please contact us via TechSupport@acrobiosystems.com if you have any question on this product.

Discounts, Gifts,
and more!



» www.acrobiosystems.com

10/27/2023