



Background

May act as a physical homophilic interaction molecule between intestinal epithelial cells (IECs) and intraepithelial lymphocytes (IELs) at the mucosal epithelium for providing immunological barrier as a first line of defense against mucosal infection. Plays a role in embryonic stem cells proliferation and differentiation. Up-regulates the expression of FABP5, MYC and cyclins A and E.

Host Species

Rabbit

Clone

6C3

Application

IHC

Property

1: 1000

State

Liquid

Positive Control

Human parathyroid glandTissues

Clonality

Monoclonal

Synonym

17-1A, 323/A3, CD326, CO-17A, EGP-2, EGP34, EGP40, Ep-CAM, ESA, GA733-2, HEA125, KS1/4, KSA, Ly74, M4S1, MH99, MIC18, MK-1, MOC31, TACST-1, TACSTD1, TROP1

Research Field

Cancer Drug Targets

Source

Rabbit

Isotype

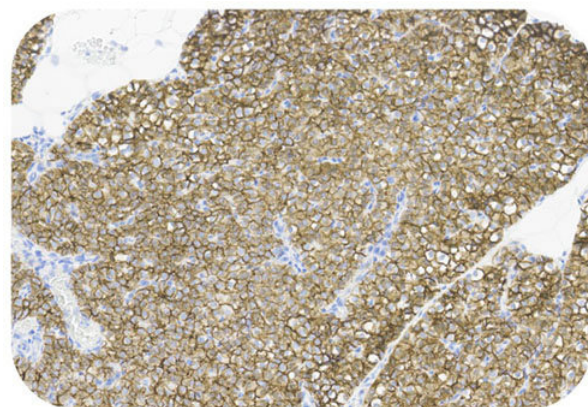
IgG

Storage

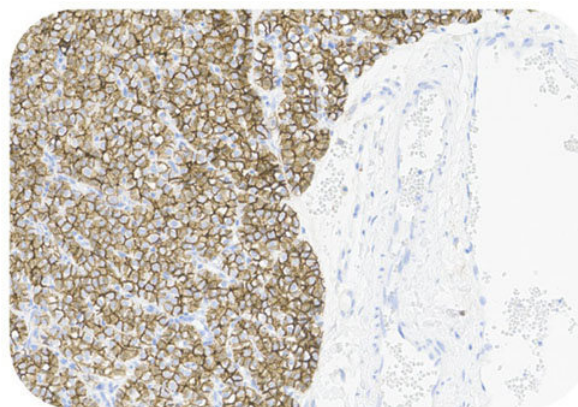
Shipped at 4°C. Store at +4°C short term (1-2 weeks). Upon delivery aliquot. Store at -20°C long term. Avoid freeze / thaw cycle.

Typical Data

Control Sample



Immunohistochemistry (Formalin/PFA-fixed paraffin-embedded sections) - Recombinant Monoclonal Anti-EpCAM Antibody, Rabbit (6C3) (HGS-S265)
Human Parathyroid Gland Tissue, 20X



Immunohistochemistry (Formalin/PFA-fixed paraffin-embedded sections) - Recombinant Monoclonal Anti-EpCAM Antibody, Rabbit (6C3) (HGS-S265)
Human Parathyroid Gland Tissue, 20X

Immunohistochemical analysis of paraffin embedded Human tonsil tissue labelled with HGS-S265 at 1/1000 dilution. Perform heat mediated antigen retrieval with Tris/EDTA buffer pH 9.0 before commencing with IHC staining protocol.

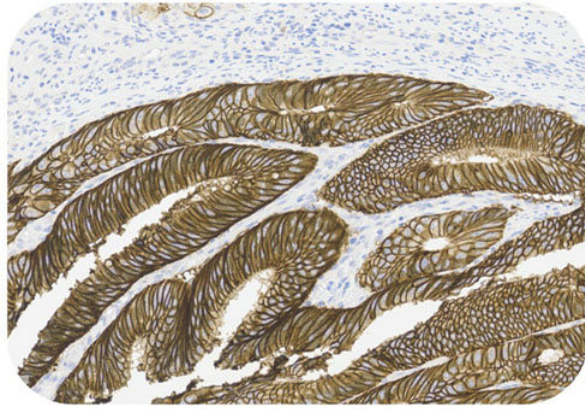
Cancer Sample

Discounts, Gifts,
and more!

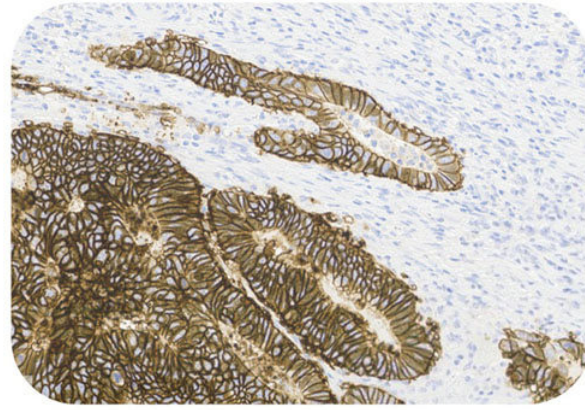


Recombinant Monoclonal Anti-EpCAM Antibody, Rabbit (6C3)

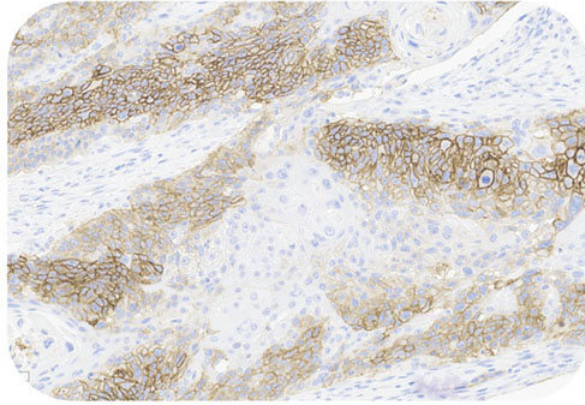
Catalog # HGS-S265



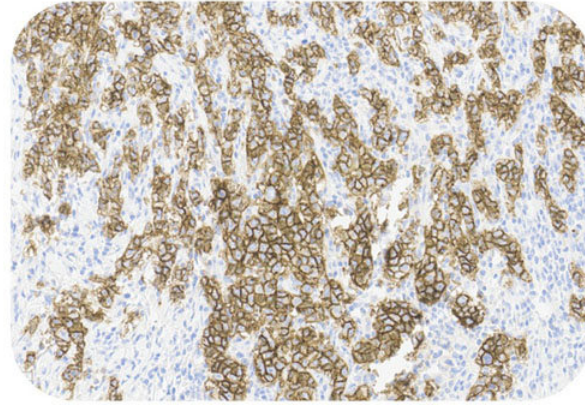
Immunohistochemistry (Formalin/PFA-fixed paraffin-embedded sections) - Recombinant Monoclonal Anti-EpCAM Antibody, Rabbit (6C3) (HGS-S265)
Human Colorectal Cancer Tissue, 20X



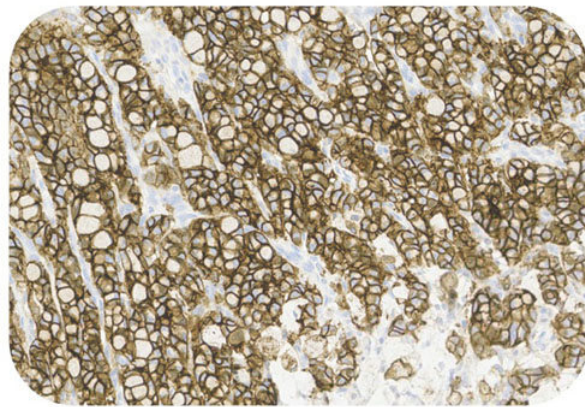
Immunohistochemistry (Formalin/PFA-fixed paraffin-embedded sections) - Recombinant Monoclonal Anti-EpCAM Antibody, Rabbit (6C3) (HGS-S265)
Human Colorectal Cancer Tissue, 20X



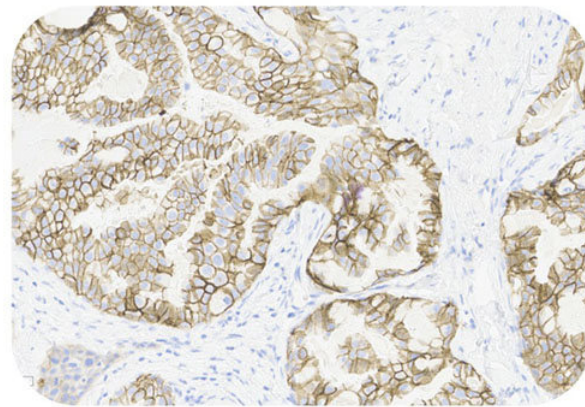
Immunohistochemistry (Formalin/PFA-fixed paraffin-embedded sections) - Recombinant Monoclonal Anti-EpCAM Antibody, Rabbit (6C3) (HGS-S265)
Human Esophagus Cancer Tissue, 20X



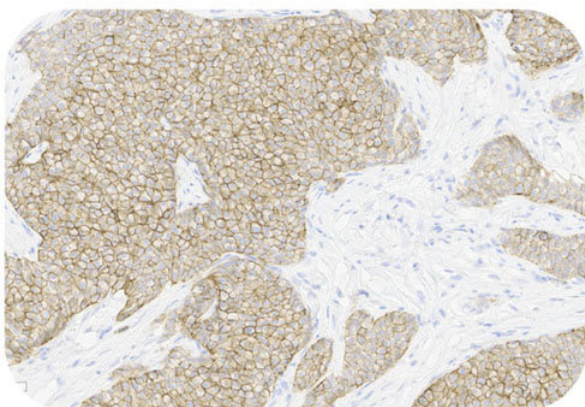
Immunohistochemistry (Formalin/PFA-fixed paraffin-embedded sections) - Recombinant Monoclonal Anti-EpCAM Antibody, Rabbit (6C3) (HGS-S265)
Human Gastric Cancer Tissue, 20X



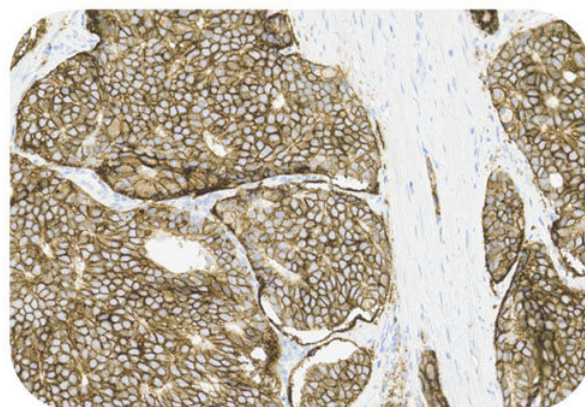
Immunohistochemistry (Formalin/PFA-fixed paraffin-embedded sections) - Recombinant Monoclonal Anti-EpCAM Antibody, Rabbit (6C3) (HGS-S265)
Human Gastric Cancer Tissue, 20X



Immunohistochemistry (Formalin/PFA-fixed paraffin-embedded sections) - Recombinant Monoclonal Anti-EpCAM Antibody, Rabbit (6C3) (HGS-S265)
Human Breast Cancer Tissue, 20X



Immunohistochemistry (Formalin/PFA-fixed paraffin-embedded sections) - Recombinant Monoclonal Anti-EpCAM Antibody, Rabbit (6C3) (HGS-S265)
Human Breast Cancer Tissue, 20X



Immunohistochemistry (Formalin/PFA-fixed paraffin-embedded sections) - Recombinant Monoclonal Anti-EpCAM Antibody, Rabbit (6C3) (HGS-S265)
Human Prostatic Cancer Tissue, 20X

Discounts, Gifts,
and more!

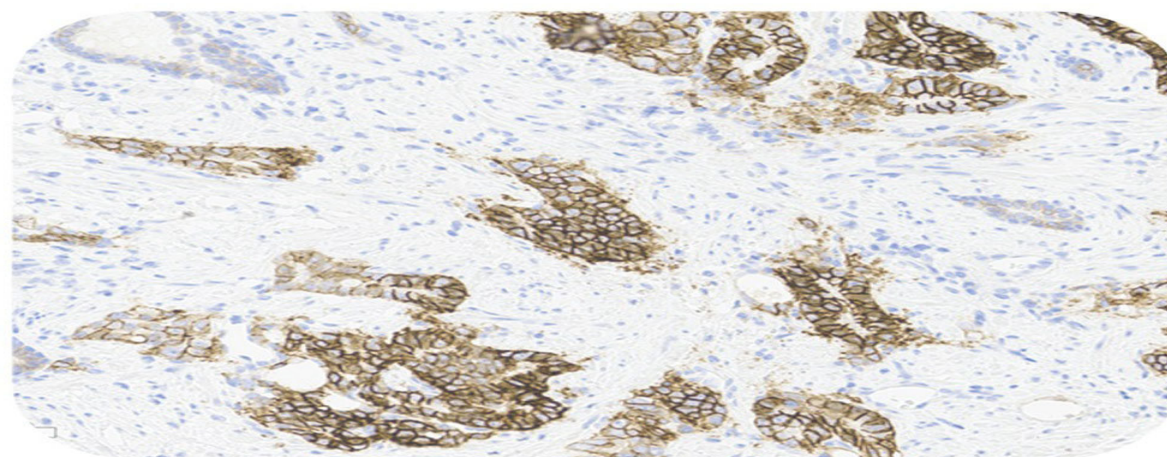


Recombinant Monoclonal Anti-EpCAM Antibody, Rabbit (6C3)

Catalog # HGS-S265



BIOSYSTEMS
Acro



**Immunohistochemistry (Formalin/PFA-fixed paraffin-embedded sections) - Recombinant Monoclonal Anti-EpCAM Antibody, Rabbit (6C3) (HGS-S265)
Human Prostatic Cancer Tissue, 20X**

Immunohistochemical analysis of paraffin embedded human cancer tissue labelled with HGS-S265 at 1/1000 dilution.
Perform heat mediated antigen retrieval with Tris/EDTA buffer pH 9.0 before commencing with IHC staining protocol.

Clinical and Translational Updates

Please contact us via TechSupport@acrobiosystems.com if you have any question on this product.

Discounts, Gifts,
and more!



➤ www.acrobiosystems.com

10/27/2023