



Background

This protein is found on thymocytes and mature T cells. It plays an essential role in T-cell interactions and also in T-cell/B-cell interaction during early lymphoid development.

Host Species

Rabbit

Clone

6E3

Application

IHC

Property

1: 1000

State

Liquid

Positive Control

Human Tonsil Tissues

Clonality

Monoclonal

Synonym

GP40, LEU-9, Tp40, TP41

Research Field

Cancer Drug Targets

Source

Rabbit

Isotype

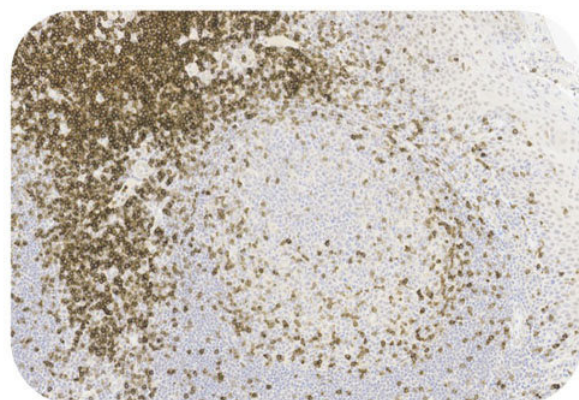
IgG

Storage

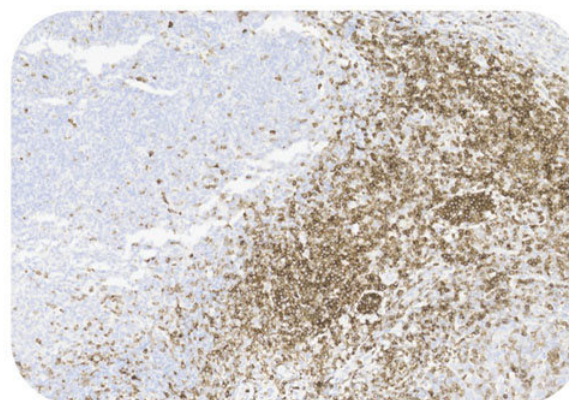
Shipped at 4°C. Store at +4°C short term (1-2 weeks). Upon delivery aliquot. Store at -20°C long term. Avoid freeze / thaw cycle.

Typical Data

Control Sample



Immunohistochemistry (Formalin/PFA-fixed paraffin-embedded sections) -Recombinant Monoclonal Anti-CD7 Antibody, Rabbit (6E3)(HGS-S257)
Human Tonsil Tissue, 20X



Immunohistochemistry (Formalin/PFA-fixed paraffin-embedded sections) -Recombinant Monoclonal Anti-CD7 Antibody, Rabbit (6E3)(HGS-S257)
Human Tonsil Tissue, 20X

Immunohistochemical analysis of paraffin embedded Human tonsil tissue labelled with HGS-S257 at 1/1000 dilution. Perform heat mediated antigen retrieval with Tris/EDTA buffer pH 9.0 before commencing with IHC staining protocol.

Cancer Sample

Discounts, Gifts,
and more!

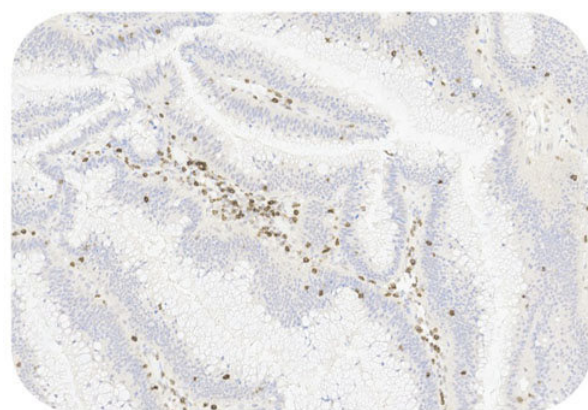


Recombinant Monoclonal Anti-CD7 Antibody, Rabbit (6E3)

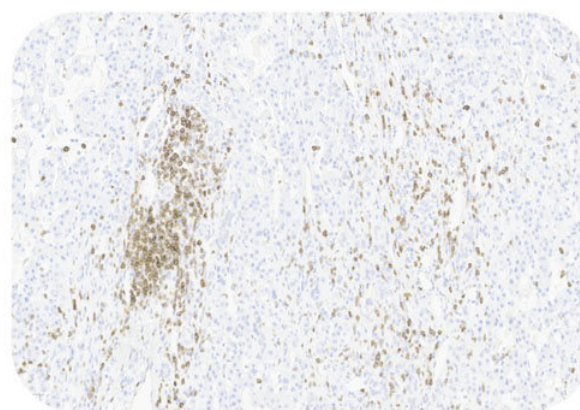
Catalog # HGS-S257



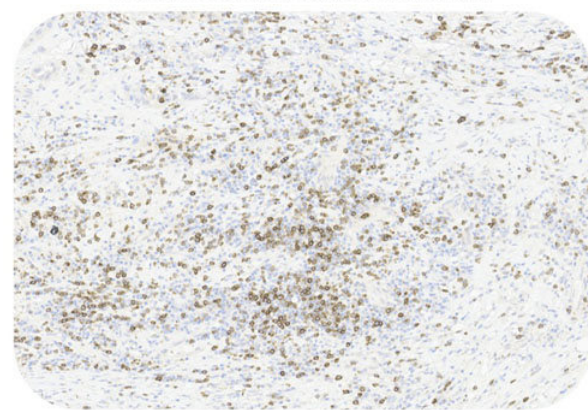
BIOSYSTEMS
Acro



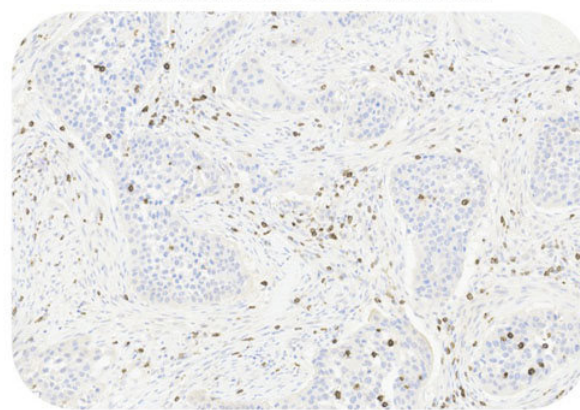
Immunohistochemistry (Formalin/PFA-fixed paraffin-embedded sections) -Recombinant Monoclonal Anti-CD7 Antibody, Rabbit (6E3)(HGS-S257)
Human Colorectal Cancer Tissue, 20X



Immunohistochemistry (Formalin/PFA-fixed paraffin-embedded sections) -Recombinant Monoclonal Anti-CD7 Antibody, Rabbit (6E3)(HGS-S257)
Human Pancreatic Cancer Tissue, 20X



Immunohistochemistry (Formalin/PFA-fixed paraffin-embedded sections) -Recombinant Monoclonal Anti-CD7 Antibody, Rabbit (6E3)(HGS-S257)
Human Lung Tissue, 20X



Immunohistochemistry (Formalin/PFA-fixed paraffin-embedded sections) -Recombinant Monoclonal Anti-CD7 Antibody, Rabbit (6E3)(HGS-S257)
Human Lung Cancer Tissue, 20X

Immunohistochemical analysis of paraffin embedded human cancer tissue labelled with HGS-S257 at 1/1000 dilution.
Perform heat mediated antigen retrieval with Tris/EDTA buffer pH 9.0 before commencing with IHC staining protocol.

Clinical and Translational Updates

Please contact us via TechSupport@acrobiosystems.com if you have any question on this product.

Discounts, Gifts,
and more!



➤ www.acrobiosystems.com

10/27/2023