



Background

The CD4 antigen is involved in the recognition of MHC class II molecules and is a co-receptor for HIV. CD4 is primarily expressed in a subset of T-lymphocytes, also referred to as T helper cells, but may also be expressed by other cells in the immune system, such as monocytes, macrophages, and dendritic cells.

Host Species

Rabbit

Clone

4F3

Application

IHC

Property

1: 1000

State

Liquid

Positive Control

Human tonsil tissue

Clonality

Monoclonal

Synonym

CD4

Research Field

Cancer Drug Targets

Source

Rabbit

Isotype

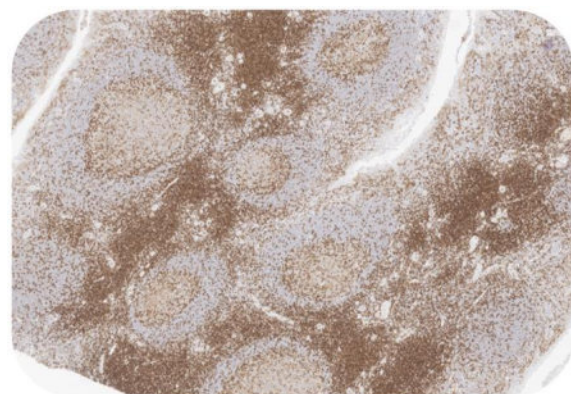
IgG

Storage

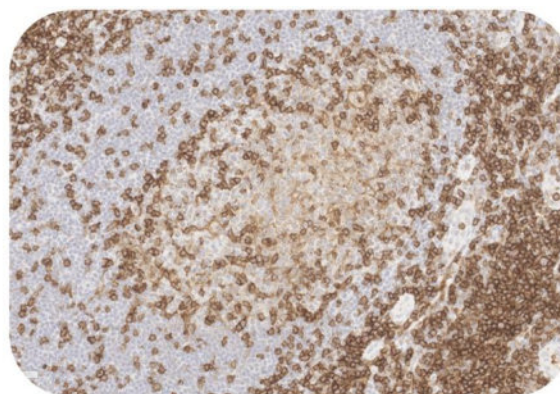
Shipped at 4°C. Store at +4°C short term (1-2 weeks). Upon delivery aliquot. Store at -20°C long term. Avoid freeze / thaw cycle.

Typical Data

Control Sample



Immunohistochemistry (Formalin/PFA-fixed paraffin-embedded sections) -Recombinant Monoclonal Anti-CD4 Antibody, Rabbit (4F3) (HGS-S255)
Human Tonsil Tissue, 4X



Immunohistochemistry (Formalin/PFA-fixed paraffin-embedded sections) -Recombinant Monoclonal Anti-CD4 Antibody, Rabbit (4F3) (HGS-S255)
Human Tonsil Tissue, 20X

Immunohistochemical analysis of paraffin embedded Human tonsil tissue labelled with HGS-S255 at 1/1000 dilution. Perform heat mediated antigen retrieval with Tris/EDTA buffer pH 9.0 before commencing with IHC staining protocol.

Cancer Sample

Discounts, Gifts,
and more!

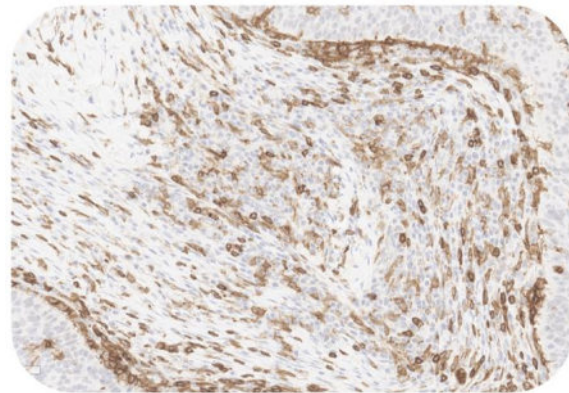


Recombinant Monoclonal Anti-CD4 Antibody, Rabbit (4F3)

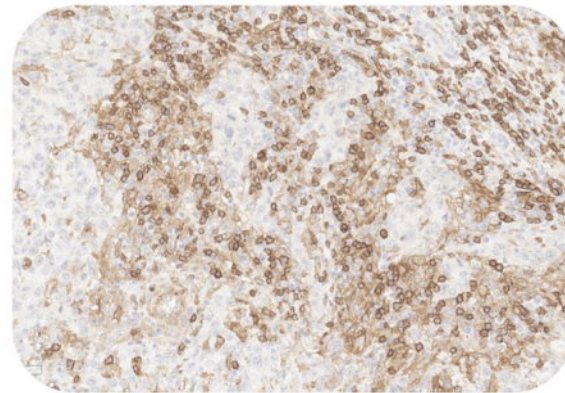
Catalog # HGS-S255



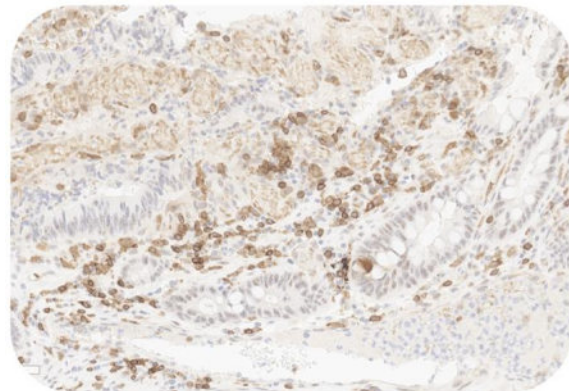
BIOSYSTEMS
Acro



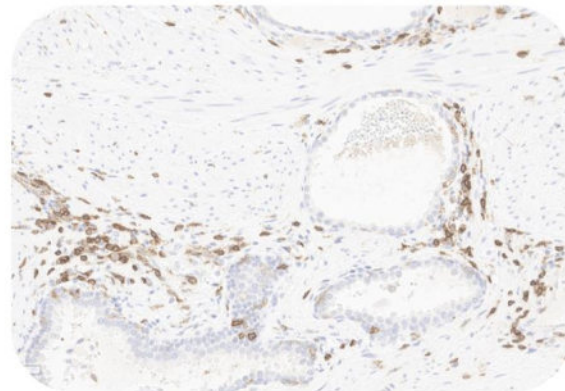
Immunohistochemistry (Formalin/PFA-fixed paraffin-embedded sections) -Recombinant Monoclonal Anti-CD4 Antibody, Rabbit (4F3) (HGS-S255)
Human Lung Cancer, 20X



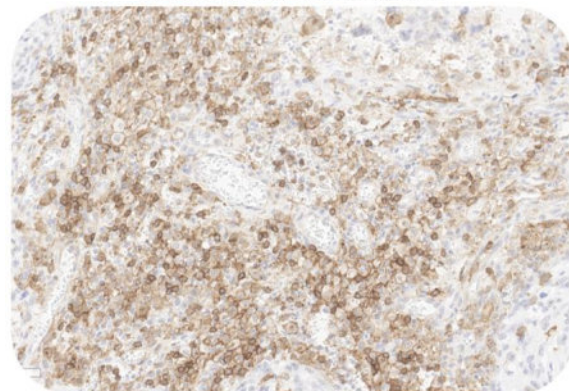
Immunohistochemistry (Formalin/PFA-fixed paraffin-embedded sections) -Recombinant Monoclonal Anti-CD4 Antibody, Rabbit (4F3) (HGS-S255)
Human Liver Cancer, 20X



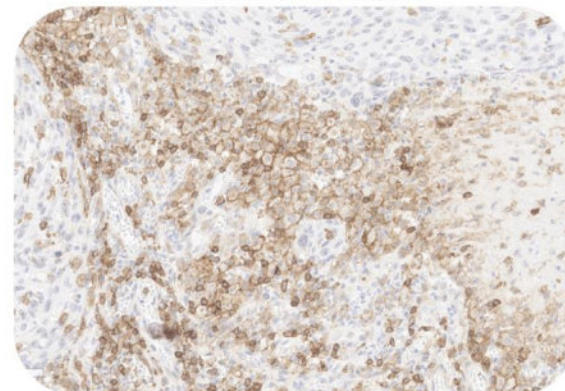
Immunohistochemistry (Formalin/PFA-fixed paraffin-embedded sections) -Recombinant Monoclonal Anti-CD4 Antibody, Rabbit (4F3) (HGS-S255)
Human Colorectal Cancer, 20X



Immunohistochemistry (Formalin/PFA-fixed paraffin-embedded sections) -Recombinant Monoclonal Anti-CD4 Antibody, Rabbit (4F3) (HGS-S255)
Human Prostate Cancer, 20X



Immunohistochemistry (Formalin/PFA-fixed paraffin-embedded sections) -Recombinant Monoclonal Anti-CD4 Antibody, Rabbit (4F3) (HGS-S255)
Human Esophageal carcinoma, 20X



Immunohistochemistry (Formalin/PFA-fixed paraffin-embedded sections) -Recombinant Monoclonal Anti-CD4 Antibody, Rabbit (4F3) (HGS-S255)
Human Esophageal carcinoma, 20X

Immunohistochemical analysis of paraffin embedded human cancer tissue labelled with HGS-S255 at 1/1000 dilution.
Perform heat mediated antigen retrieval with Tris/EDTA buffer pH 9.0 before commencing with IHC staining protocol.

Clinical and Translational Updates

Please contact us via TechSupport@acrobiosystems.com if you have any question on this product.

Discounts, Gifts,
and more!



www.acrobiosystems.com

10/27/2023