



Background

Protein tyrosine kinase that is part of several cell surface receptor complexes, but that apparently needs a coreceptor for ligand binding. Essential component of a neuregulin-receptor complex, although neuregulins do not interact with it alone.

Host Species

Rabbit

Clone

5D5

Application

IHC

Property

1: 1000

State

Liquid

Positive Control

Human breast cancer

Clonality

Monoclonal

Synonym

ERBB2

Research Field

Cancer Drug Targets

Source

Rabbit

Isotype

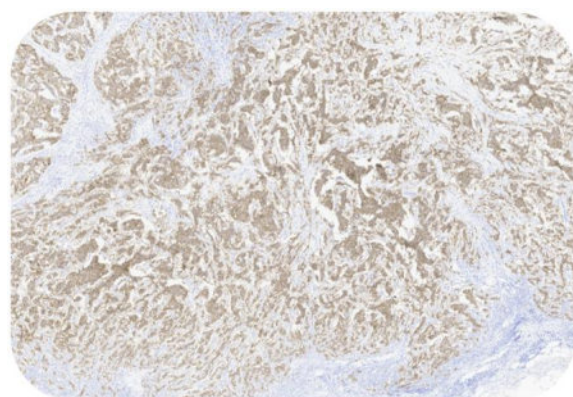
IgG

Storage

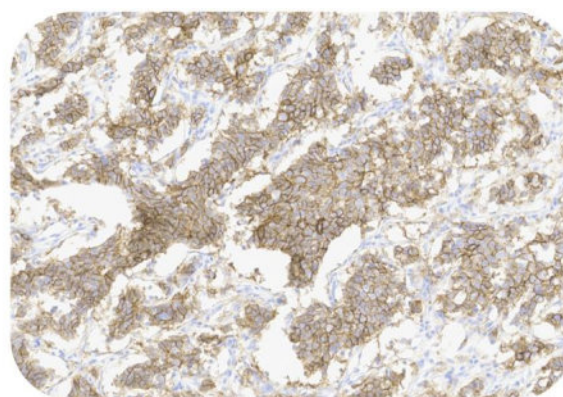
Shipped at 4°C. Store at +4°C short term (1-2 weeks). Upon delivery aliquot. Store at -20°C long term. Avoid freeze / thaw cycle.

Typical Data

Control Sample



Immunohistochemistry (Formalin/PFA-fixed paraffin-embedded sections) -Recombinant Monoclonal Anti-HER2 Antibody, Rabbit (5D5) (HGS-S254)
Human Breast Cancer, 4X



Immunohistochemistry (Formalin/PFA-fixed paraffin-embedded sections) -Recombinant Monoclonal Anti-HER2 Antibody, Rabbit (5D5) (HGS-S254)
Human Breast Cancer, 20X

Immunohistochemical analysis of paraffin embedded human tumor tissue labelled with HGS-S254 at 1/1000 dilution. Perform heat mediated antigen retrieval with Tris/EDTA buffer pH 9.0 before commencing with IHC staining protocol.

Cancer Sample

Discounts, Gifts,
and more!

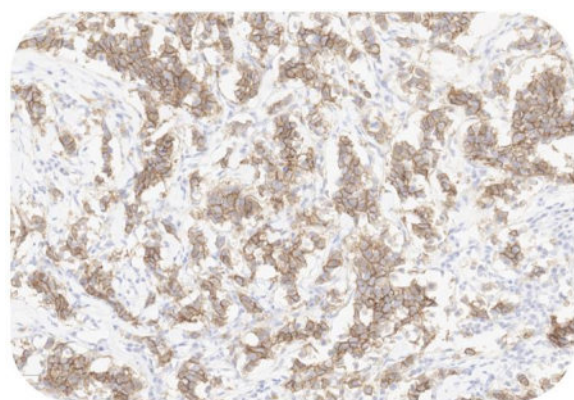


Recombinant Monoclonal Anti-HER2 Antibody, Rabbit (5D5)

Catalog # HGS-S254

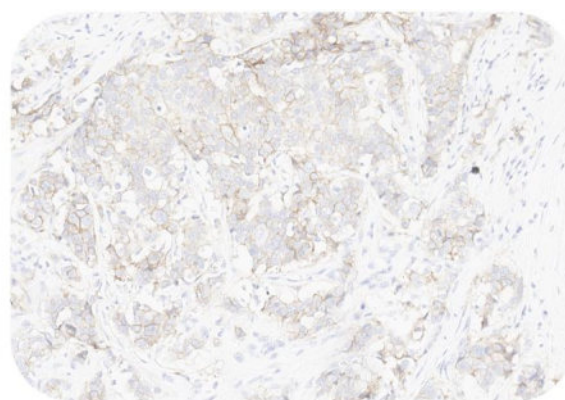


BIOSYSTEMS
Acro



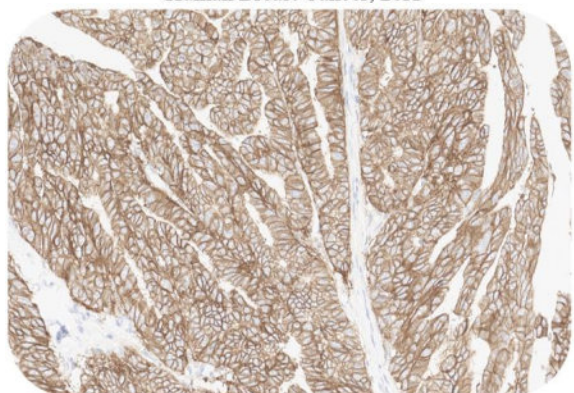
Immunohistochemistry (Formalin/PFA-fixed paraffin-embedded sections) -Recombinant Monoclonal Anti-HER2 Antibody, Rabbit (5D5) (HGS-S254)

Human Breast Cancer, 20X



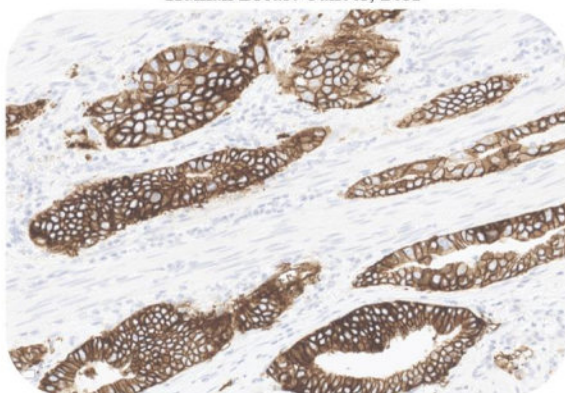
Immunohistochemistry (Formalin/PFA-fixed paraffin-embedded sections) -Recombinant Monoclonal Anti-HER2 Antibody, Rabbit (5D5) (HGS-S254)

Human Breast Cancer, 20X



Immunohistochemistry (Formalin/PFA-fixed paraffin-embedded sections) -Recombinant Monoclonal Anti-HER2 Antibody, Rabbit (5D5) (HGS-S254)

Human Gastric cancer, 20X



Immunohistochemistry (Formalin/PFA-fixed paraffin-embedded sections) -Recombinant Monoclonal Anti-HER2 Antibody, Rabbit (5D5) (HGS-S254)

Human Gastric cancer, 20X

Immunohistochemical analysis of paraffin embedded human cancer tissue labelled with HGS-S254 at 1/1000 dilution.
Perform heat mediated antigen retrieval with Tris/EDTA buffer pH 9.0 before commencing with IHC staining protocol.

Clinical and Translational Updates

Please contact us via TechSupport@acrobiosystems.com if you have any question on this product.

Discounts, Gifts,
and more!



» www.acrobiosystems.com

12/11/2023