



Background

CD56 is found on T cells and NK cells, and is involved in cell migration, axonal growth, pathfinding and synaptic plasticity. Polysialic modification results in reduction of CD56-mediated cell adhesion. Through its extracellular region, CD56 mediates homophilic and heterophilic interactions by binding extracellular matrix components such as laminin and integrins. CD56 is expressed on most neuroectodermal derived cell lines, tissues and neoplasms such as retinoblastoma, medulloblastoma, astrocytomas and neuroblastoma.

Host Species

Rabbit

Clone

3B6

Application

IHC

Property

1: 500

State

Liquid

Positive Control

Human Tonsil Tissues

Clonality

Monoclonal

Synonym

CD56, NCAM

Research Field

Cancer Drug Targets

Source

Rabbit

Isotype

IgG

Storage

Shipped at 4°C. Store at +4°C short term (1-2 weeks). Upon delivery aliquot. Store at -20°C long term. Avoid freeze / thaw cycle.

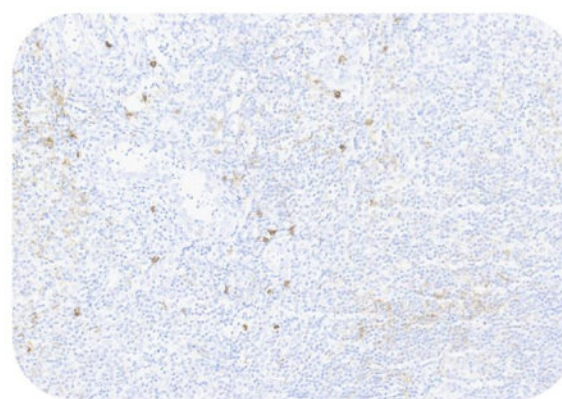
Typical Data

Control Sample



Immunohistochemistry (Formalin/PFA-fixed paraffin-embedded sections) -Recombinant Monoclonal Anti-CD56 Antibody, Rabbit (3B6) (HGS-S251)

Human Tonsil Tissue, 4X



Immunohistochemistry (Formalin/PFA-fixed paraffin-embedded sections) -Recombinant Monoclonal Anti-CD56 Antibody, Rabbit (3B6) (HGS-S251)

Human Tonsil Tissue, 20X

Immunohistochemical analysis of paraffin embedded Human tonsil tissue labelled with HGS-S251 at 1/500 dilution. Perform heat mediated antigen retrieval with Tris/EDTA buffer pH 9.0 before commencing with IHC staining protocol.

Cancer Sample

Discounts, Gifts,
and more!

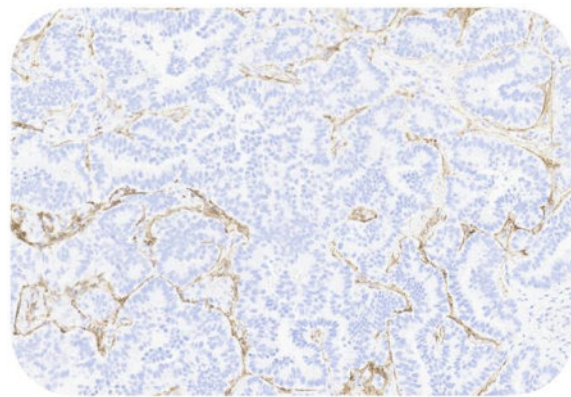


Recombinant Monoclonal Anti-CD56 Antibody, Rabbit (3B6)

Catalog # HGS-S251

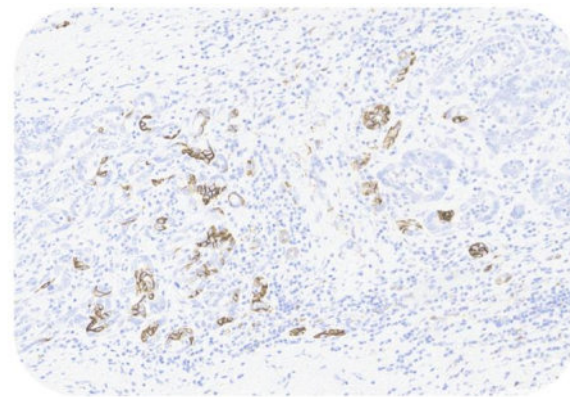


BIOSYSTEMS
Acro



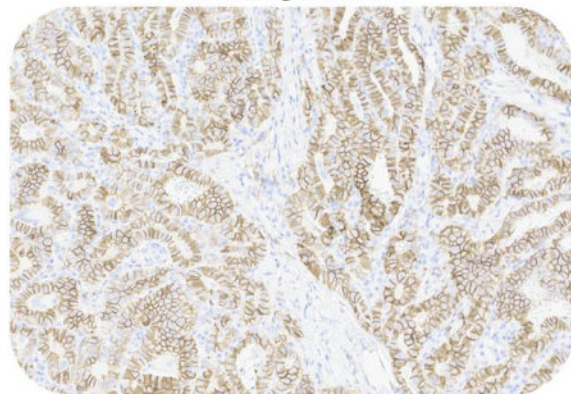
Immunohistochemistry (Formalin/PFA-fixed paraffin-embedded sections) -Recombinant Monoclonal Anti-CD56 Antibody, Rabbit (3B6) (HGS-S251)

Human Lung Cancer, 20X



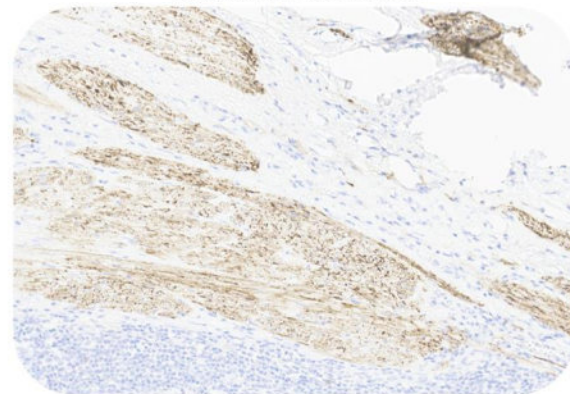
Immunohistochemistry (Formalin/PFA-fixed paraffin-embedded sections) -Recombinant Monoclonal Anti-CD56 Antibody, Rabbit (3B6) (HGS-S251)

Human Liver Cancer, 20X



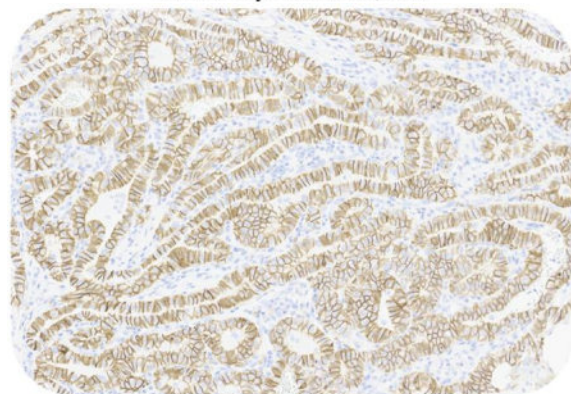
Immunohistochemistry (Formalin/PFA-fixed paraffin-embedded sections) -Recombinant Monoclonal Anti-CD56 Antibody, Rabbit (3B6) (HGS-S251)

Human Thyroid Cancer, 20X



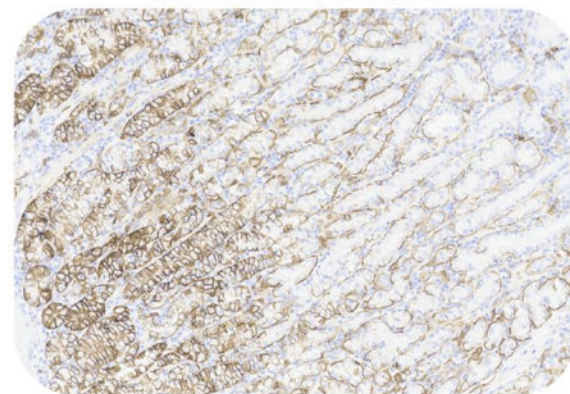
Immunohistochemistry (Formalin/PFA-fixed paraffin-embedded sections) -Recombinant Monoclonal Anti-CD56 Antibody, Rabbit (3B6) (HGS-S251)

Human Urothelial Cancer, 20X



Immunohistochemistry (Formalin/PFA-fixed paraffin-embedded sections) -Recombinant Monoclonal Anti-CD56 Antibody, Rabbit (3B6) (HGS-S251)

Human Thyroid Cancer, 20X



Immunohistochemistry (Formalin/PFA-fixed paraffin-embedded sections) -Recombinant Monoclonal Anti-CD56 Antibody, Rabbit (3B6) (HGS-S251)

Human Gastric Cancer, 20X

Immunohistochemical analysis of paraffin embedded human cancer tissue labelled with HGS-S251 at 1/500 dilution.
Perform heat mediated antigen retrieval with Tris/EDTA buffer pH 9.0 before commencing with IHC staining protocol.

Clinical and Translational Updates

Please contact us via TechSupport@acrobiosystems.com if you have any question on this product.

Discounts, Gifts,
and more!



» www.acrobiosystems.com

10/27/2023