



Background

CD45 is an evolutionary highly conserved receptor protein tyrosine phosphatase exclusively expressed on all nucleated cells of the hematopoietic system. It is characterized by the expression of several isoforms, specific to a certain cell type and the developmental or activation status of the cell.

Host Species

Mouse

Clone

3G2

Application

IHC

Property

1: 500

State

Liquid

Positive Control

Human Tonsil Tissues

Clonality

Monoclonal

Synonym

CD45 (LCA)

Research Field

Cancer Drug Targets

Source

Mouse

Isotype

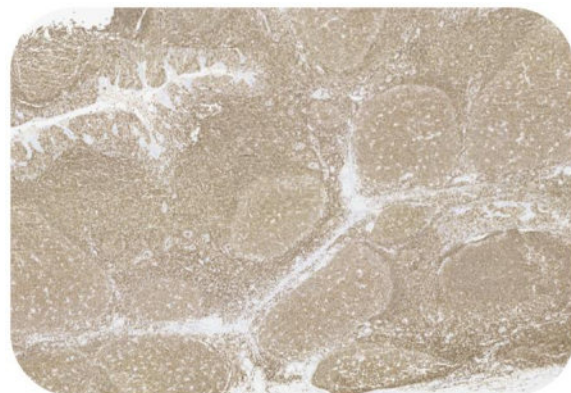
IgG

Storage

Shipped at 4°C. Store at +4°C short term (1-2 weeks). Upon delivery aliquot. Store at -20°C long term. Avoid freeze / thaw cycle.

Typical Data

Control Sample



Immunohistochemistry (Formalin/PFA-fixed paraffin-embedded sections) -Recombinant Monoclonal Anti-CD45(LCA) Antibody, Mouse (3G2) (HGS-S247)
Human Tonsil Tissue, 4X



Immunohistochemistry (Formalin/PFA-fixed paraffin-embedded sections) -Recombinant Monoclonal Anti-CD45(LCA) Antibody, Mouse (3G2) (HGS-S247)
Human Tonsil Tissue 20X

Immunohistochemical analysis of paraffin embedded Human tonsil tissue labelled with HGS-S247 at 1/500 dilution. Perform heat mediated antigen retrieval with Tris/EDTA buffer pH 9.0 before commencing with IHC staining protocol.

Cancer Sample

Discounts, Gifts,
and more!

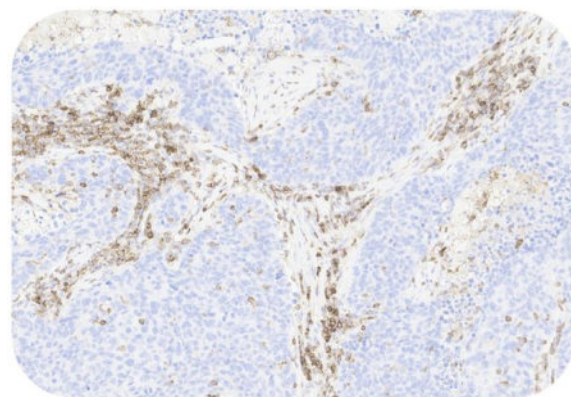


Recombinant Monoclonal Anti-CD45(LCA) Antibody, Mouse (3G2)

Catalog # HGS-S247

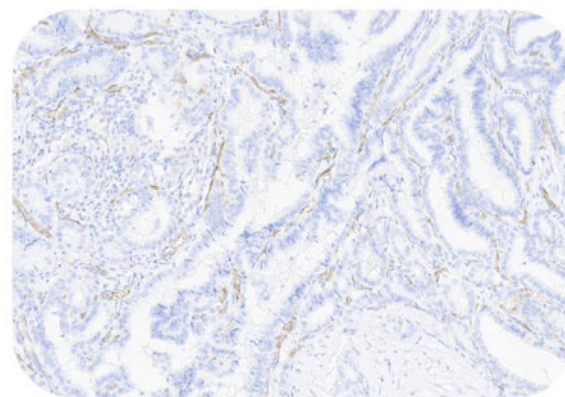


BIOSYSTEMS
Acro



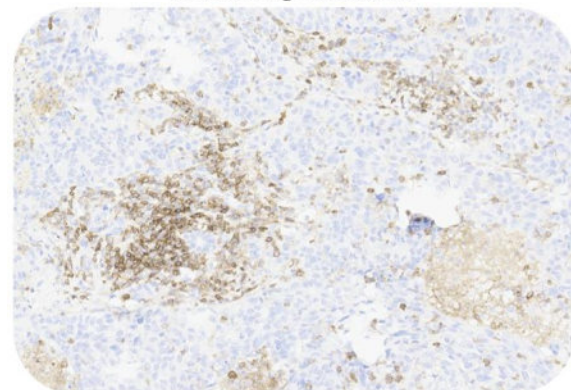
Immunohistochemistry (Formalin/PFA-fixed paraffin-embedded sections) -Recombinant Monoclonal Anti-CD45(LCA) Antibody, Mouse (3G2) (HGS-S247)

Human Lung Cancer, 20X



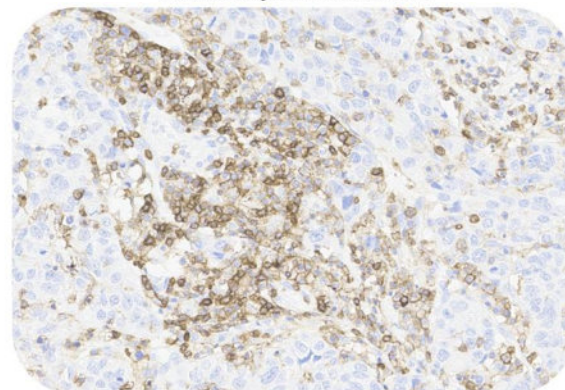
Immunohistochemistry (Formalin/PFA-fixed paraffin-embedded sections) -Recombinant Monoclonal Anti-CD45(LCA) Antibody, Mouse (3G2) (HGS-S247)

Human Thyroid cancer, 20X



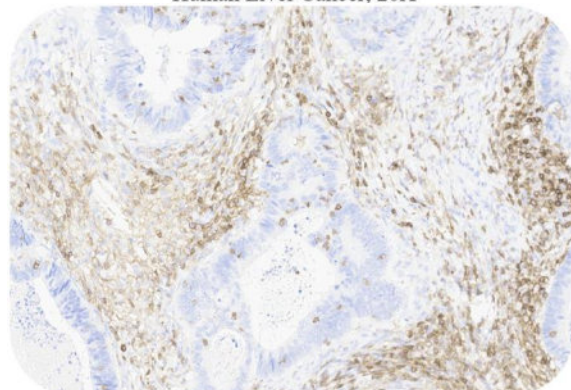
Immunohistochemistry (Formalin/PFA-fixed paraffin-embedded sections) -Recombinant Monoclonal Anti-CD45(LCA) Antibody, Mouse (3G2) (HGS-S247)

Human Liver Cancer, 20X



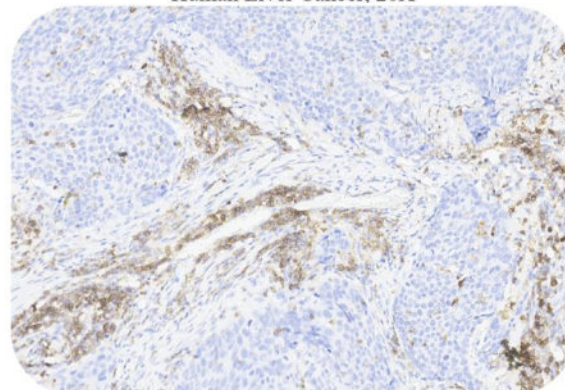
Immunohistochemistry (Formalin/PFA-fixed paraffin-embedded sections) -Recombinant Monoclonal Anti-CD45(LCA) Antibody, Mouse (3G2) (HGS-S247)

Human Liver Cancer, 20X



Immunohistochemistry (Formalin/PFA-fixed paraffin-embedded sections) -Recombinant Monoclonal Anti-CD45(LCA) Antibody, Mouse (3G2) (HGS-S247)

Human Colorectal Cancer, 20X



Immunohistochemistry (Formalin/PFA-fixed paraffin-embedded sections) -Recombinant Monoclonal Anti-CD45(LCA) Antibody, Mouse (3G2) (HGS-S247)

Human Esophageal Cancer, 20X

Immunohistochemical analysis of paraffin embedded human cancer tissue labelled with HGS-S247 at 1/500 dilution.
Perform heat mediated antigen retrieval with Tris/EDTA buffer pH 9.0 before commencing with IHC staining protocol.

Clinical and Translational Updates

Please contact us via TechSupport@acrobiosystems.com if you have any question on this product.

Discounts, Gifts,
and more!



» www.acrobiosystems.com

10/27/2023