



## Background

CD163 is a member of the scavenger receptor cysteine-rich (SRCR) superfamily, and is exclusively expressed in monocytes and macrophages. It functions as an acute phase-regulated receptor involved in the clearance and endocytosis of hemoglobin/haptoglobin complexes by macrophages, and may thereby protect tissues from free hemoglobin-mediated oxidative damage. This protein may also function as an innate immune sensor for bacteria and inducer of local inflammation.

## Host Species

Mouse

## Clone

3B1

## Application

IHC

## Property

1: 500

## State

Liquid

## Positive Control

Human Tonsil Tissues

## Clonality

Monoclonal

## Synonym

M130, CD163

## Research Field

Cancer Drug Targets

## Source

Mouse

## Isotype

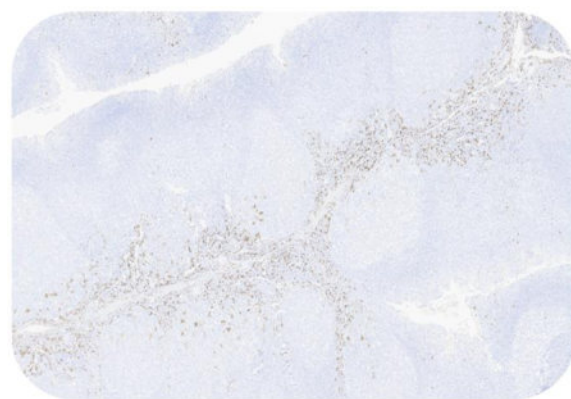
IgG

## Storage

Shipped at 4°C. Store at +4°C short term (1-2 weeks). Upon delivery aliquot. Store at -20°C long term. Avoid freeze / thaw cycle.

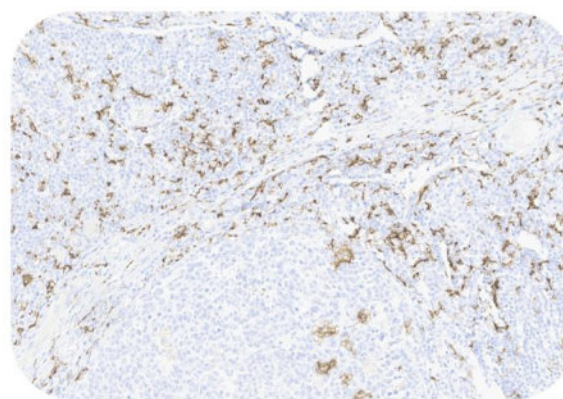
## Typical Data

### Control Sample



Immunohistochemistry (Formalin/PFA-fixed paraffin-embedded sections) -Recombinant Monoclonal Anti-CD163 Antibody, Mouse (3B1) (HGS-S243)

Human Tonsil Tissue, 4X



Immunohistochemistry (Formalin/PFA-fixed paraffin-embedded sections) -Recombinant Monoclonal Anti-CD163 Antibody, Mouse (3B1) (HGS-S243)

Human Tonsil Tissue 20X

Immunohistochemical analysis of paraffin embedded Human tonsil tissue labelled with HGS-S243 at 1/500 dilution.

Perform heat mediated antigen retrieval with Tris/EDTA buffer pH 9.0 before commencing with IHC staining protocol.

### Cancer Sample

Discounts, Gifts,  
and more!

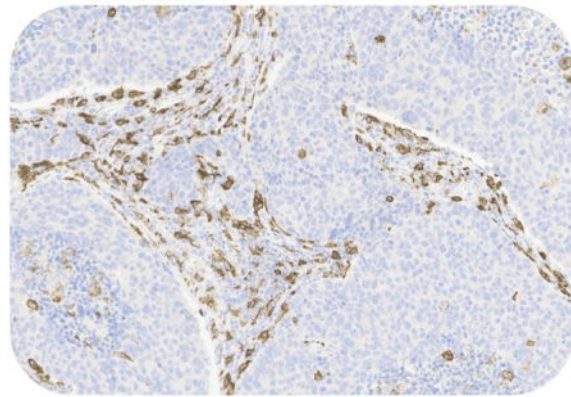


# Recombinant Monoclonal Anti-CD163 Antibody, Mouse (3B1)

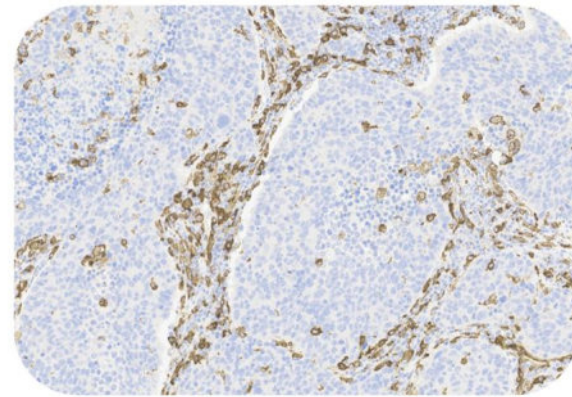
Catalog # HGS-S243



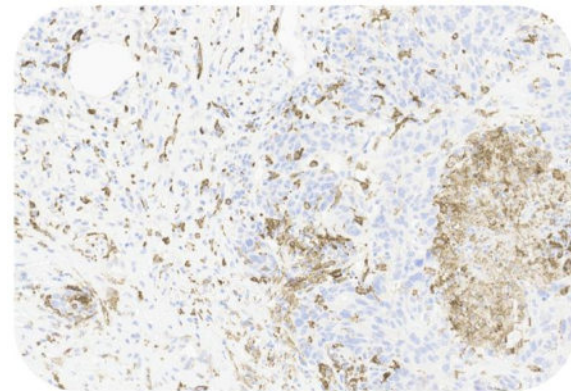
BIOSYSTEMS  
**Acro**



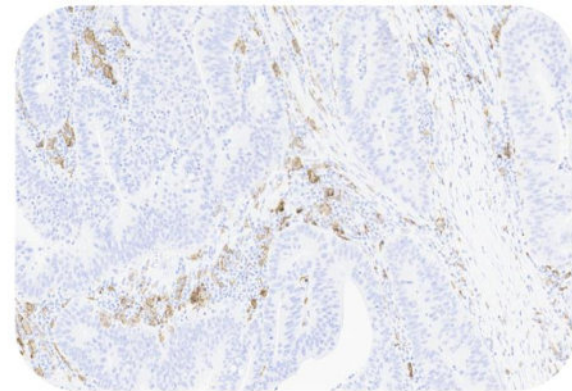
Immunohistochemistry (Formalin/PFA-fixed paraffin-embedded sections) -Recombinant Monoclonal Anti-CD163 Antibody, Mouse (3B1) (HGS-S243)  
Human Lung Cancer, 20X



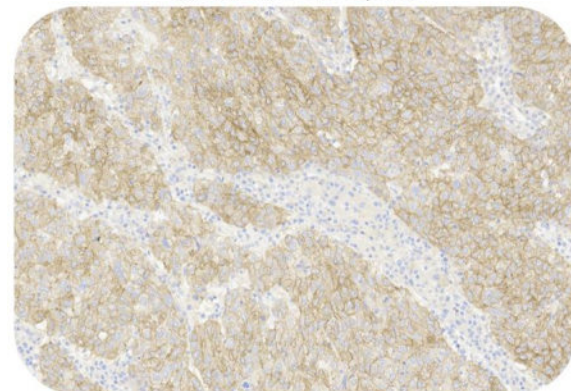
Immunohistochemistry (Formalin/PFA-fixed paraffin-embedded sections) -Recombinant Monoclonal Anti-CD163 Antibody, Mouse (3B1) (HGS-S243)  
Human Lung Cancer, 20X



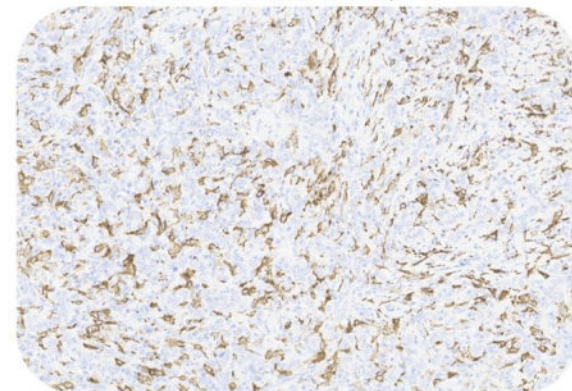
Immunohistochemistry (Formalin/PFA-fixed paraffin-embedded sections) -Recombinant Monoclonal Anti-CD163 Antibody, Mouse (3B1) (HGS-S243)  
Human Liver Cancer, 20X



Immunohistochemistry (Formalin/PFA-fixed paraffin-embedded sections) -Recombinant Monoclonal Anti-CD163 Antibody, Mouse (3B1) (HGS-S243)  
Human Colorectal Cancer, 20X



Immunohistochemistry (Formalin/PFA-fixed paraffin-embedded sections) -Recombinant Monoclonal Anti-CD163 Antibody, Mouse (3B1) (HGS-S243)  
Human Pancreatic cancer, 20X



Immunohistochemistry (Formalin/PFA-fixed paraffin-embedded sections) -Recombinant Monoclonal Anti-CD163 Antibody, Mouse (3B1) (HGS-S243)  
Human Gastric cancer, 20X

Immunohistochemical analysis of paraffin embedded human cancer tissue labelled with HGS-S243 at 1/500 dilution.  
Perform heat mediated antigen retrieval with Tris/EDTA buffer pH 9.0 before commencing with IHC staining protocol.

## Clinical and Translational Updates

Please contact us via [TechSupport@acrobiosystems.com](mailto:TechSupport@acrobiosystems.com) if you have any question on this product.

Discounts, Gifts,  
and more!



» [www.acrobiosystems.com](http://www.acrobiosystems.com)

10/27/2023