



## Background

TROP2 is a member of a family including at least two type I membrane proteins. It transduces an intracellular calcium signal and acts as a cell surface receptor.

## Host Species

Mouse

## Clone

3A8

## Application

IHC

## Property

1: 500

## State

Liquid

## Positive Control

Human Tonsil Tissue

## Clonality

Monoclonal

## Synonym

TROP2

## Research Field

Cancer Drug Targets

## Source

Mouse

## Isotype

IgG

## Storage

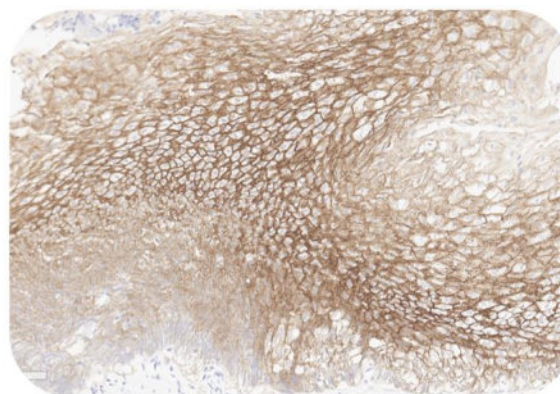
Shipped at 4°C. Store at +4°C short term (1-2 weeks). Upon delivery aliquot. Store at -20°C long term. Avoid freeze / thaw cycle.

## Typical Data

### Control Sample



Immunohistochemistry (Formalin/PFA-fixed paraffin-embedded sections) -Recombinant Monoclonal Anti-TROP2 Antibody, Mouse (3A8) (HCS-S311)  
Human Tonsil Tissue, 4X



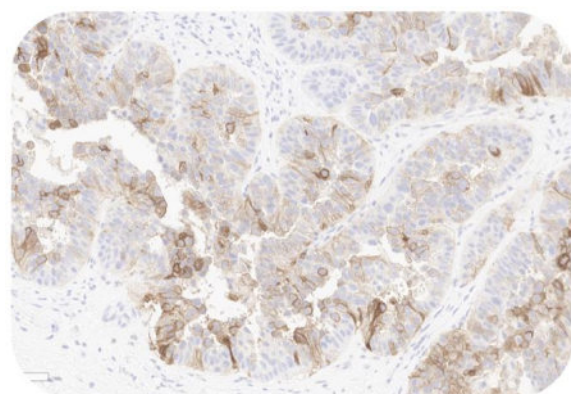
Immunohistochemistry (Formalin/PFA-fixed paraffin-embedded sections) -Recombinant Monoclonal Anti-TROP2 Antibody, Mouse (3A8) (HCS-S311)  
Human Tonsil Tissue, 20X

Immunohistochemical analysis of paraffin embedded Human Tonsil Tissue labelled with HCS-S311 at 1/500 dilution. Perform heat mediated antigen retrieval with Tris/EDTA buffer pH 9.0 before commencing with IHC staining protocol.

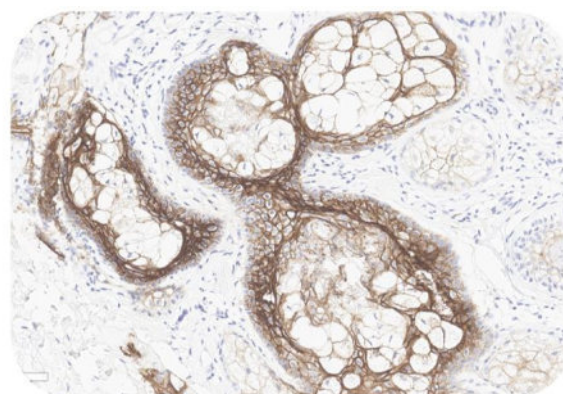
### Cancer Sample

Discounts, Gifts,  
and more!

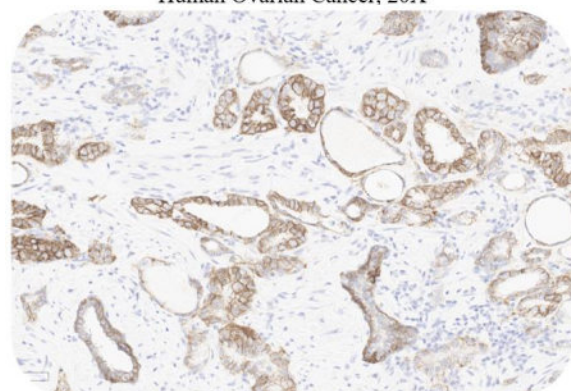




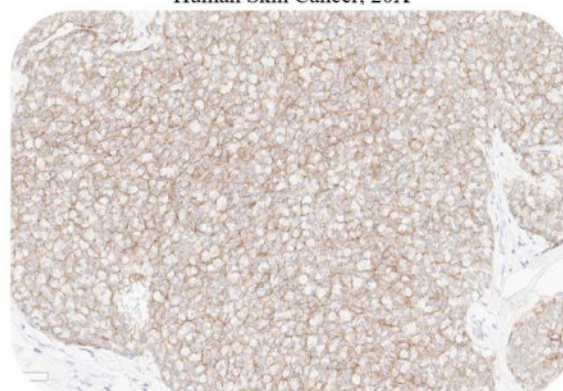
Immunohistochemistry (Formalin/PFA-fixed paraffin-embedded sections) -Recombinant Monoclonal Anti-TROP2 Antibody, Mouse (3A8) (HCS-S311)  
Human Ovarian Cancer, 20X



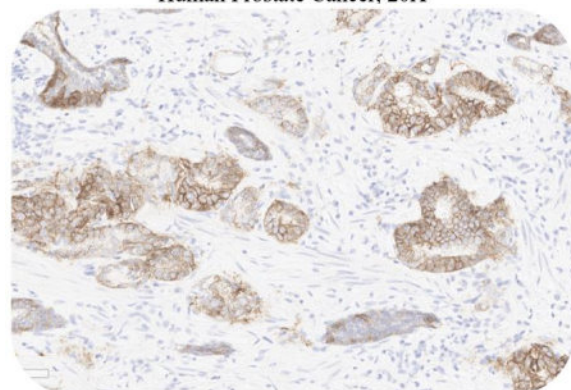
Immunohistochemistry (Formalin/PFA-fixed paraffin-embedded sections) -Recombinant Monoclonal Anti-TROP2 Antibody, Mouse (3A8) (HCS-S311)  
Human Skin Cancer, 20X



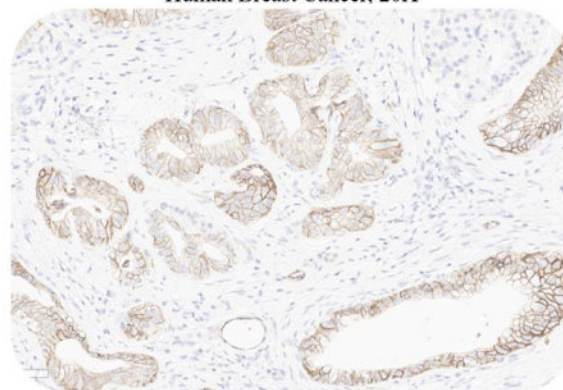
Immunohistochemistry (Formalin/PFA-fixed paraffin-embedded sections) -Recombinant Monoclonal Anti-TROP2 Antibody, Mouse (3A8) (HCS-S311)  
Human Prostate Cancer, 20X



Immunohistochemistry (Formalin/PFA-fixed paraffin-embedded sections) -Recombinant Monoclonal Anti-TROP2 Antibody, Mouse (3A8) (HCS-S311)  
Human Breast Cancer, 20X



Immunohistochemistry (Formalin/PFA-fixed paraffin-embedded sections) -Recombinant Monoclonal Anti-TROP2 Antibody, Mouse (3A8) (HCS-S311)  
Human Prostate Cancer, 20X



Immunohistochemistry (Formalin/PFA-fixed paraffin-embedded sections) -Recombinant Monoclonal Anti-TROP2 Antibody, Mouse (3A8) (HCS-S311)  
Human Pancreatic Cancer, 20X

Immunohistochemical analysis of paraffin embedded human cancer tissue labelled with HCS-S311 at 1/500 dilution.  
Perform heat mediated antigen retrieval with Tris/EDTA buffer pH 9.0 before commencing with IHC staining protocol.

### Clinical and Translational Updates

Please contact us via [TechSupport@acrobiosystems.com](mailto:TechSupport@acrobiosystems.com) if you have any question on this product.

Discounts, Gifts,  
and more!

