

FITC-Labeled Mouse IgG2b Antibody Isotype Control

Catalog # DNP-FM486



Source

FITC-Labeled Mouse IgG2b Antibody Isotype Control is a chimeric monoclonal antibody recombinantly expressed from human 293 cells (HEK293), which combines the variable region of a mouse monoclonal antibody with Mouse IgG2b constant domain. The mouse monoclonal antibody is produced from a hybridoma resulting from fusion of SP2/0 myeloma and B-lymphocytes obtained from a mouse immunized with DNP.

Isotype

Mouse IgG2b/kappa

Specificity

Specifically reacts with DNP (Dinitrophenyl) and DNP conjugated proteins.

Conjugate

FITC  
Excitation source: 488 nm spectral line, argon-ion laser  
Excitation Wavelength: 488 nm  
Emission Wavelength: 535 nm

Labeling

*The primary amines in the side chains of lysine residues and the N-terminus of the protein are conjugated with FITC using standard chemical labeling method. The residual FITC is removed by molecular sieve treatment during purification process.*

Protein Ratio

The FITC to protein molar ratio is 1-3.

Purity

>90% as determined by SDS-PAGE.

Endotoxin

Less than 1.0 EU per µg by the LAL method.

Formulation

Lyophilized from 0.22 µm filtered solution in PBS, pH7.4 with trehalose as protectant.  
Contact us for customized product form or formulation.

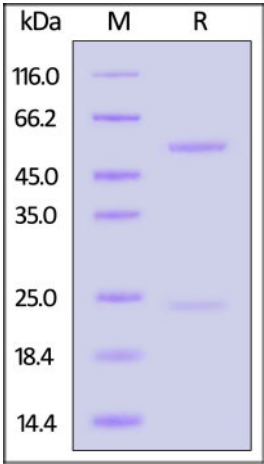
Reconstitution

Please see Certificate of Analysis for specific instructions.  
*For best performance, we strongly recommend you to follow the reconstitution protocol provided in the CoA.*

Storage

For long term storage, the product should be stored at lyophilized state at -20°C or lower.  
*Please avoid repeated freeze-thaw cycles.*  
This product is stable after storage at:  
• -20°C to -70°C for 12 months in lyophilized state;  
• -70°C for 12 months under sterile conditions after reconstitution.

SDS-PAGE



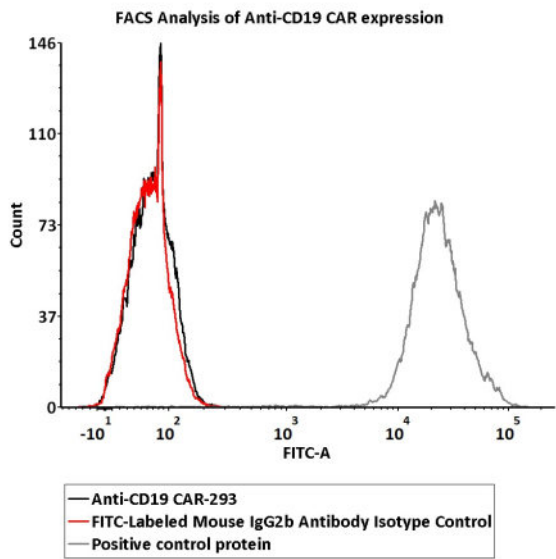
# FITC-Labeled Mouse IgG2b Antibody Isotype Control

Catalog # DNP-FM486



FITC-Labeled Mouse IgG2b Antibody Isotype Control on SDS-PAGE under reducing (R) condition. The gel was stained with Coomassie Blue. The purity of the protein is greater than 90%.

## Bioactivity-FACS



2e5 of Anti-CD19 CAR-293 cells were stained with 100  $\mu$ L of 1  $\mu$ g/mL of FITC-Labeled Mouse IgG2b Antibody Isotype Control (Cat. No. DNP-FM486) and positive control protein respectively, washed and analyzed with FACS (QC tested).

## Background

A hapten is a small molecule that can elicit an immune response only when conjugated with a large carrier such as a protein. Typical haptens include drugs, urushiol, quinone, steroids, etc. Peptides and non-protein antigens usually need conjugating to a carrier protein (such as BSA (bovine serum albumin) or KLH (keyhole limpet hemocyanin) to become good immunogens). Additionally, haptens should be administered with an adjuvant to ensure a high quality immune response. It is important that the hapten design (preserving greatly the chemical structure and spatial conformation of target compound), selection of the appropriate carrier protein and the conjugation method are key conditions for the desired specificity anti-hapten antibodies. We design anti-hapten antibodies based on the HaptenDB information.

## Clinical and Translational Updates

