

**Synonym**

Delta3,delta-like 3 (Drosophila),delta-like protein 3,DLL3,Pudgy,SCDO1,SCDO1delta3

**Source**

APC-Labeled Human DLL3 Protein, His Tag (DL3-HA2H8) is produced via conjugation of APC to Human DLL3 Protein, His Tag with a new generation site-specific technology under Star Staining labeling platform. Human DLL3 Protein, His Tag is expressed from human 293 cells (HEK293). It contains AA Ala 27 - Leu 492 (Accession # [Q9NYJ7-1](#)). Predicted N-terminus: Ala 27

**Molecular Characterization**

This protein carries a polyhistidine tag at the C-terminus  
The protein has a calculated MW of 63.1 kDa.

**Conjugate**

APC  
Excitation Wavelength: 640 nm  
Emission Wavelength: 661 nm

**Endotoxin**

Less than 1.0 EU per µg by the LAL method.

**Purity**

>90% as determined by SDS-PAGE.

**Formulation**

Lyophilized from 0.22 µm filtered solution in PBS, 0.2% BSA, pH7.4 with trehalose as protectant.

Contact us for customized product form or formulation.

**Reconstitution**

Please see Certificate of Analysis for specific instructions.  
*For best performance, we strongly recommend you to follow the reconstitution protocol provided in the CoA.*

**Storage**

For long term storage, the product should be stored at lyophilized state at -20°C or lower.

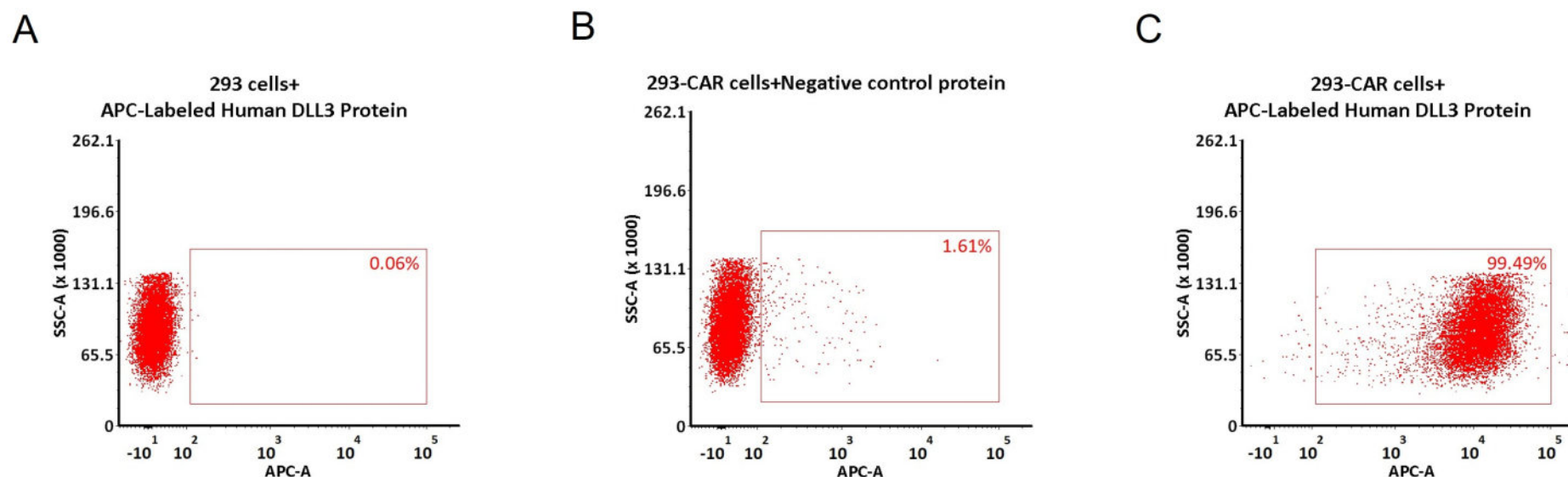
*Please protect from light and avoid repeated freeze-thaw cycles.*

This product is stable after storage at:

- -20°C to -70°C for 12 months in lyophilized state;
- -70°C for 3 months under sterile conditions after reconstitution.

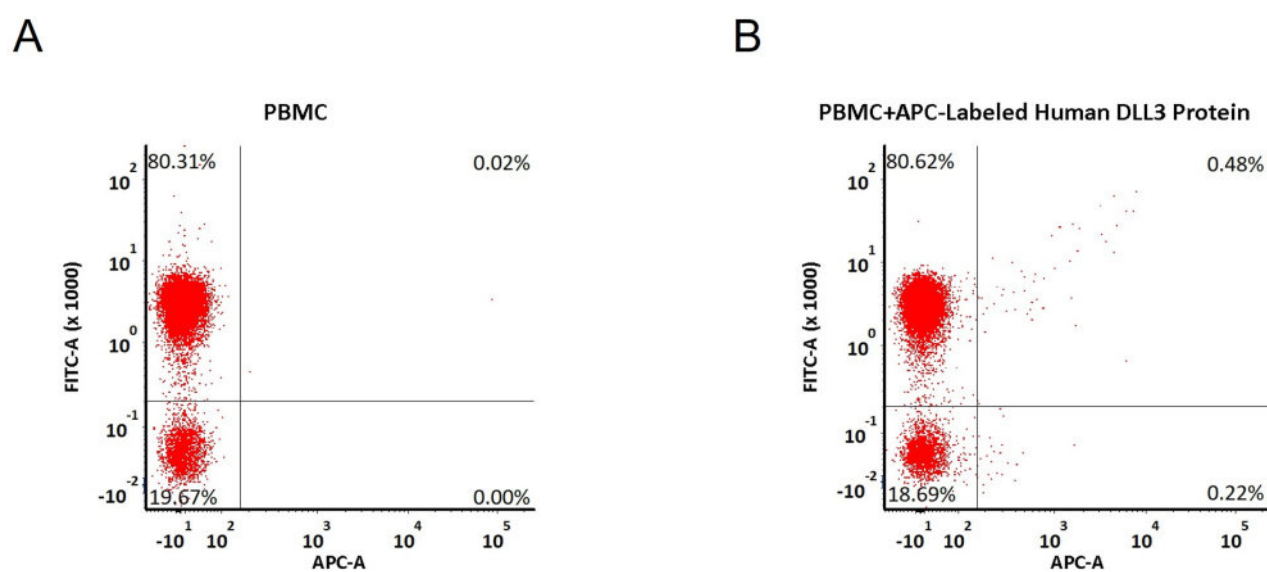
**Evaluation of CAR expression**

FACS Analysis of Anti-DLL3 CAR Expression



5e5 of anti-DLL3 CAR-293 cells were stained with 100 µL of 1:50 dilution (2 µL stock solution in 100 µL FACS buffer) of APC-Labeled Human DLL3 Protein, His Tag (Cat. No. DL3-HA2H8) and negative control protein respectively (Fig. C and B), and non-transfected 293 cells were used as a control (Fig. A). APC signal was used to evaluate the binding activity (QC tested).

FACS Analysis of Non-specific binding to PBMCs



5e5 of PBMCs were stained with APC-Labeled Human DLL3 Protein, His Tag (Cat. No. DL3-HA2H8) and anti-CD3 antibody, washed and then analyzed with FACS. FITC signal was used to evaluate the expression of CD3<sup>+</sup> T cells in PBMCs, and APC signal was used to evaluate the non-specific binding activity to PBMCs (QC tested).

### Background

Delta-like protein 3 (DLL3) is a transmembrane protein that belongs to the Delta/Serrate/Lag-2 (DSL) family of Notch ligands. May be required to divert neurons along a specific differentiation pathway. Plays a role in the formation of somite boundaries during segmentation of the paraxial mesoderm. DLL3 protein is expressed on the surface of tumor cells but not in normal adult tissues.

### Clinical and Translational Updates

Please contact us via [TechSupport@acrobiosystems.com](mailto:TechSupport@acrobiosystems.com) if you have any question on this product.