

**Synonym**

Delta3,delta-like 3 (Drosophila),delta-like protein  
3,DLL3,Pudgy,SCDO1,SCDO1delta3

**Source**

Cynomolgus DLL3 (27-488), His Tag(DL3-C52H9) is expressed from human 293 cells (HEK293). It contains AA Ala 27 - Arg 488 (Accession # [A0A2K5WSR1-1](#) ).

Predicted N-terminus: Ala 27

**Molecular Characterization**

DLL3(Ala 27 - Arg 488)  
A0A2K5WSR1-1 Poly-his

This protein carries a polyhistidine tag at the C-terminus

The protein has a calculated MW of 50.0 kDa. The protein migrates as 50-55 kDa when calibrated against [Star Ribbon Pre-stained Protein Marker](#) under reducing (R) condition (SDS-PAGE) due to glycosylation.

**Endotoxin**

Less than 1.0 EU per µg by the LAL method.

**Purity**

>90% as determined by SDS-PAGE.

**Formulation**

Lyophilized from 0.22 µm filtered solution in PBS, pH7.4 with trehalose as protectant.

Contact us for customized product form or formulation.

**Reconstitution**

Please see Certificate of Analysis for specific instructions.

*For best performance, we strongly recommend you to follow the reconstitution protocol provided in the CoA.*

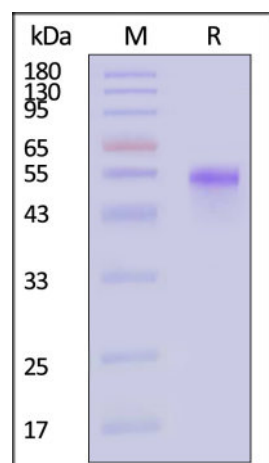
**Storage**

For long term storage, the product should be stored at lyophilized state at -20°C or lower.

*Please avoid repeated freeze-thaw cycles.*

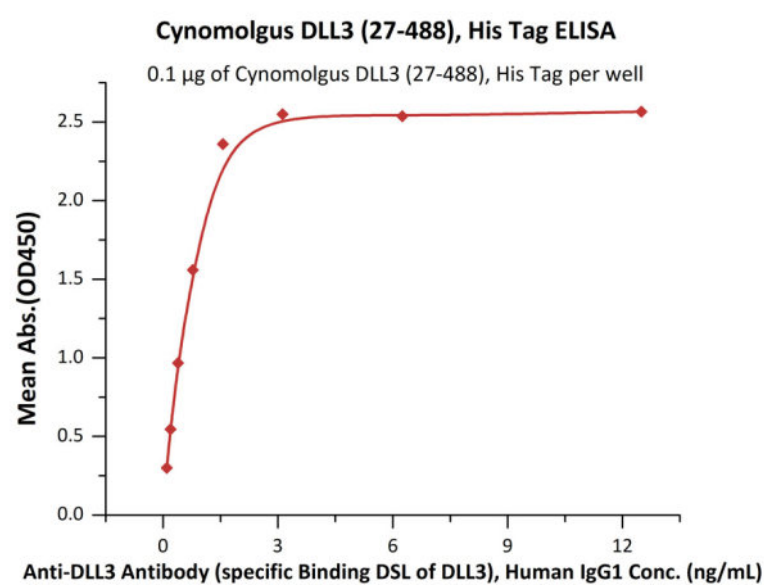
This product is stable after storage at:

- -20°C to -70°C for 12 months in lyophilized state;
- -70°C for 3 months under sterile conditions after reconstitution.

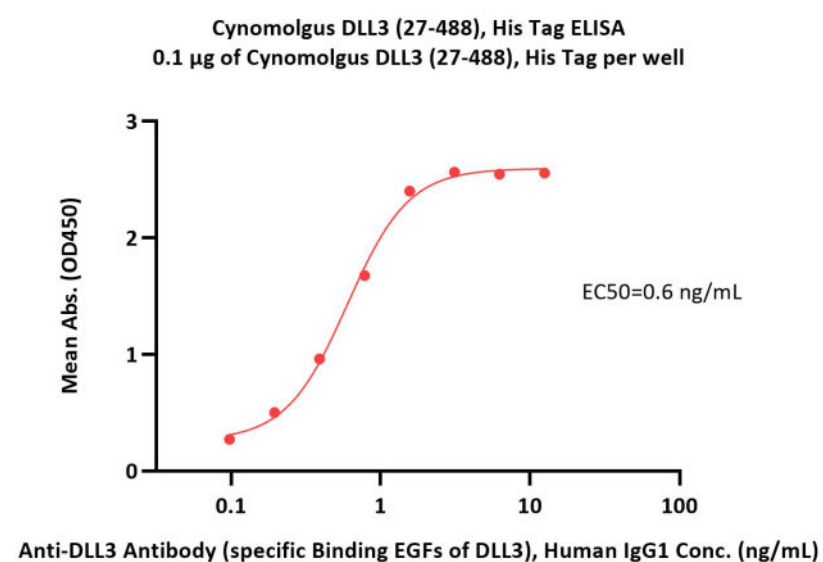
**SDS-PAGE**

Cynomolgus DLL3 (27-488), His Tag on SDS-PAGE under reducing (R) condition. The gel was stained with Coomassie Blue. The purity of the protein is greater than 90% (With [Star Ribbon Pre-stained Protein Marker](#)).

**Bioactivity-ELISA**



Immobilized Cynomolgus DLL3 (27-488), His Tag (Cat. No. DL3-C52H9) at 1 µg/mL (100 µL/well) can bind Anti-DLL3 Antibody (specific Binding DSL of DLL3), Human IgG1 with a linear range of 0.1-3 ng/mL (QC tested).



Immobilized Cynomolgus DLL3 (27-488), His Tag (Cat. No. DL3-C52H9) at 1 µg/mL (100 µL/well) can bind Anti-DLL3 Antibody (specific Binding EGFs of DLL3), Human IgG1 with a linear range of 0.1-3 ng/mL (Routinely tested).

## Background

Delta-like protein 3 (DLL3) is a transmembrane protein that belongs to the Delta/Serrate/Lag-2 (DSL) family of Notch ligands. May be required to divert neurons along a specific differentiation pathway. Plays a role in the formation of somite boundaries during segmentation of the paraxial mesoderm. DLL3 protein is expressed on the surface of tumor cells but not in normal adult tissues.

## Clinical and Translational Updates

Please contact us via [TechSupport@acrobiosystems.com](mailto:TechSupport@acrobiosystems.com) if you have any question on this product.