

### Synonym

C-X-C motif chemokine 2, Growth-regulated protein beta, Gro-beta, Macrophage inflammatory protein 2-alpha, MIP2-alpha, GRO2, GROB, MIP2A, SCYB2

### Source

Human CXCL2, Fc Tag(CX2-H5253) is expressed from human 293 cells (HEK293). It contains AA Ala 35 - Asn 107 (Accession # [P19875](#)).

Predicted N-terminus: Ala 35

### Molecular Characterization



This protein carries a human IgG1 Fc tag at the C-terminus

The protein has a calculated MW of 34.3 kDa. The protein migrates as 38-42 kDa under reducing (R) condition (SDS-PAGE) due to glycosylation.

### Endotoxin

Less than 1.0 EU per µg by the LAL method.

### Purity

>95% as determined by SDS-PAGE.

>90% as determined by SEC-MALS.

### Formulation

Lyophilized from 0.22 µm filtered solution in PBS, pH7.4 with trehalose as protectant.

Contact us for customized product form or formulation.

### Reconstitution

Please see Certificate of Analysis for specific instructions.

*For best performance, we strongly recommend you to follow the reconstitution protocol provided in the CoA.*

### Storage

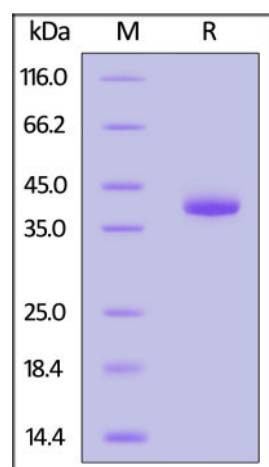
For long term storage, the product should be stored at lyophilized state at -20°C or lower.

*Please avoid repeated freeze-thaw cycles.*

This product is stable after storage at:

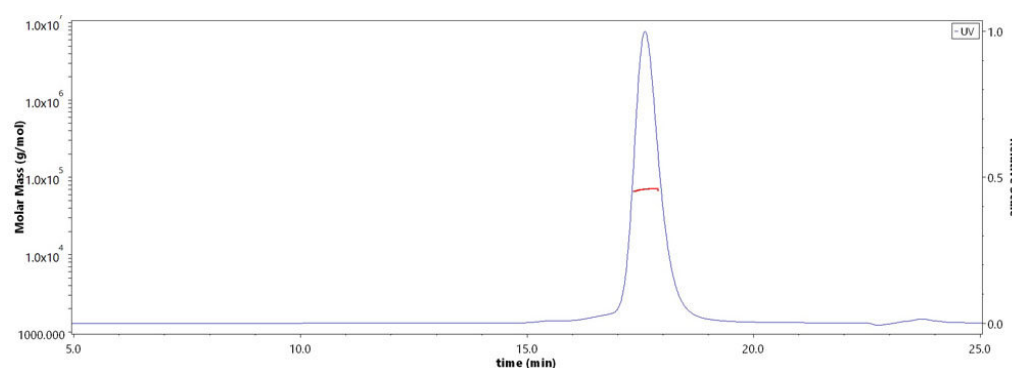
- -20°C to -70°C for 12 months in lyophilized state;
- -70°C for 3 months under sterile conditions after reconstitution.

### SDS-PAGE



Human CXCL2, Fc Tag on SDS-PAGE under reducing (R) condition. The gel was stained overnight with Coomassie Blue. The purity of the protein is greater than 95%.

### SEC-MALS



The purity of Human CXCL2, Fc Tag (Cat. No. CX2-H5253) is more than 90% and the molecular weight of this protein is around 60-75 kDa verified by SEC-MALS.

[Report](#)

### Background

Chemokine (C-X-C motif) ligand 2 (CXCL2) is a small cytokine belonging to the CXC chemokine family that is also called macrophage inflammatory protein 2-alpha (MIP2-alpha), Growth-regulated protein beta (Gro-beta) and Gro oncogene-2 (Gro-2). CXCL2 is 90% identical in amino acid sequence as a related chemokine, CXCL1. This chemokine is secreted by monocytes and macrophages and is chemotactic for polymorphonuclear leukocytes and hematopoietic stem cells. CXCL2

mobilizes cells by interacting with a cell surface chemokine receptor called CXCR2. CXCL2, like related chemokines, is also a powerful neutrophil chemoattractant and is involved in many immune responses including wound healing, cancer metastasis, and angiogenesis.

### Clinical and Translational Updates

Please contact us via [TechSupport@acrobiosystems.com](mailto:TechSupport@acrobiosystems.com) if you have any question on this product.