

Synonym

C2, Complement C2, Complement Component C2

Source

Cynomolgus Complement C2, His Tag(CO2-C52H8) is expressed from human 293 cells (HEK293). It contains AA Ala 21 - Leu 752 (Accession # [G8F3W0-1](#)).

Predicted N-terminus: Ala 21

Molecular Characterization

Complement C2(Ala 21 - Leu 752) G8F3W0-1	Poly-his
---	----------

This protein carries a polyhistidine tag at the C-terminus

The protein has a calculated MW of 83.0 kDa. The protein migrates as 90-100 kDa under reducing (R) condition (SDS-PAGE) due to glycosylation.

Endotoxin

Less than 1.0 EU per µg by the LAL method.

Purity

>95% as determined by SDS-PAGE.

Formulation

Lyophilized from 0.22 µm filtered solution in 20 mM Tris, 150 mM NaCl, Ph 7.5 with Trehalose as protectant.

Contact us for customized product form or formulation.

Reconstitution

Please see Certificate of Analysis for specific instructions.

For best performance, we strongly recommend you to follow the reconstitution protocol provided in the CoA.

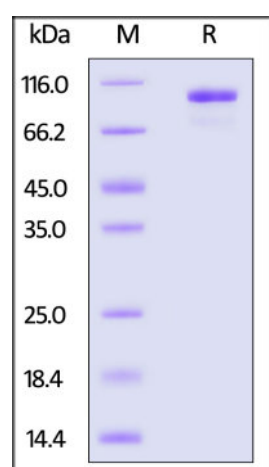
Storage

For long term storage, the product should be stored at lyophilized state at -20°C or lower.

Please avoid repeated freeze-thaw cycles.

This product is stable after storage at:

- -20°C to -70°C for 12 months in lyophilized state;
- -70°C for 3 months under sterile conditions after reconstitution.

SDS-PAGE

Cynomolgus Complement C2, His Tag on SDS-PAGE under reducing (R) condition. The gel was stained overnight with Coomassie Blue. The purity of the protein is greater than 95%.

Bioactivity

Measured by its ability to cleave a colorimetric peptide substrate, N-carbobenzyloxy-Gly-Arg-ThioBenzyl ester (Z-GR-SBzl), in the presence of 5,5'-Dithio-bis (2-nitrobenzoic acid) (DTNB). The specific activity is >100 pmol/min/µg (QC tested).

Clinical and Translational Updates

Please contact us via TechSupport@acrobiosystems.com if you have any question on this product.