

Synonym

CLU,Clusterin,AAG4,APOJ,CLI,KUB1,SGP-2,SP-40,TRPM2

Source

Human Clusterin, His Tag (CLU-H5227) is expressed from human 293 cells (HEK293). It contains AA Asp 23 - Glu 449 (Accession # [NP_001822.3](#)).

Predicted N-terminus: Asp 23

Molecular Characterization

Clusterin(Asp 23 - Glu 449) NP_001822.3	Poly-his
--	----------

This protein carries a polyhistidine tag at the C-terminus.

The protein has a calculated MW of 50.9 kDa. The protein migrates as 32-40 kDa under reducing (R) condition (SDS-PAGE).

Endotoxin

Less than 1.0 EU per µg by the LAL method.

Purity

>95% as determined by SDS-PAGE.

Formulation

Lyophilized from 0.22 µm filtered solution in PBS, pH7.4. Normally trehalose is added as protectant before lyophilization.

Contact us for customized product form or formulation.

Reconstitution

Please see Certificate of Analysis for specific instructions.

For best performance, we strongly recommend you to follow the reconstitution protocol provided in the CoA.

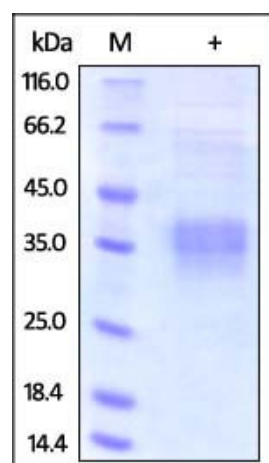
Storage

For long term storage, the product should be stored at lyophilized state at -20°C or lower.

Please avoid repeated freeze-thaw cycles.

This product is stable after storage at:

- -20°C to -70°C for 12 months in lyophilized state;
- -70°C for 3 months under sterile conditions after reconstitution.

SDS-PAGE

Human Clusterin, His Tag on SDS-PAGE under reducing (R) condition. The gel was stained overnight with Coomassie Blue. The purity of the protein is greater than 95%.

Background

Clusterin (CLU) is also known as dimeric acidic glycoprotein (DAG protein), testosterone repressed prostate message-2 (TRPM-2), sulfated glycoprotein-2 (SGP-2) and complement lysis inhibitor (CLI), is a secreted multifunctional glycoprotein protein which belongs to the clusterin family. Intracellular cleavages of the precursor of clusterin remove the signal peptide and generate comparably sized α and β chains which are secreted as an 80 kDa Nglycosylated disulfidelinked heterodimer. DAG protein is predominantly expressed in adult testis, ovary, adrenal gland, liver, heart, and brain and in many epithelial tissues during embryonic development. Clusterin involve in several basic biological events such as cell death, tumor progression, and neurodegenerative disorders. Upregulation of clusterin mRNA and

protein levels detected in diverse disease states and in in vitro systems have led to suggestions that it functions in membrane lipid recycling, in apoptotic cell death, and as a stress-induced secreted chaperone protein, amongst others.

References

Please contact us via TechSupport@acrobiosystems.com if you have any question on this product.