

# HEK293/Human GLP-1R Stable Cell Line (High Expression) Data Sheet

## HEK293/Human GLP-1R Stable Cell Line (High Expression)

| Catalog No. | Size   |
|-------------|--|
| CHEK-ATP160 | 2 × (1 vial contains ~5×10 <sup>6</sup> cells) |

### • Description

The HEK293/Human GLP-1R Stable Cell Line was engineered to express the receptor full length human GLP-1R (Gene ID: 2740), with different levels of GLP-1R expression (High, Medium, Low). Surface expression of human GLP-1R was confirmed by flow cytometry.

### • Application

- Useful for cell-based GLP-1R binding assay
- Screen for human GLP-1R agonists based on cAMP accumulation assay

### • Cell Line Profile

|                        |  |
|------------------------|--|
| Cell line              | HEK293/Human GLP-1R Stable Cell Line (High Expression) |
| Host Cell              | HEK293   |
| Property               | Adherent   |
| Complete Growth Medium | DMEM + 10% FBS   |
| Selection Marker       | Hygromycin (20 µg/mL)                                  |
| Incubation             | 37°C with 5% CO <sub>2</sub>                           |
| Doubling Time          | 22-24 hours  |
| Transduction Technique | Lentivirus   |

## HEK293/Human GLP-1R Stable Cell Line (High Expression) Data Sheet

### • *Materials Required for Cell Culture*

- DMEM medium (Gibco, Cat.No.11965-092)
- Fetal bovine serum (CellMax, Cat.No.SA211.02)
- Hygromycin (Invitrogen, Cat.No.10687010)
- 0.25% Trypsin-EDTA (1X), Phenol Red (Gibco, Cat.No.25200-056)
- Penicillin-Streptomycin (Gibco, Cat.No.15140-122)
- Phosphate Buffered Saline (1X) (HyClone, Cat.No.SH30256.01)
- Complete Growth Medium: DMEM + 10% FBS
- Culture Medium: DMEM + 10% FBS, Hygromycin (20µg/mL)
- Freeze Medium: 90% FBS, 10% (V/V) DMSO
- T-75 Culture flask (Corning, 430641)
- Cryogenic storage vials (SARSTEDT, 72.379.007)
- Thermostat water bath
- Centrifuge
- Luna cell counter (Logos Biosystems, LUNA- II )
- CO<sub>2</sub> Incubator (Thermo, 3111)
- Biological Safety Cabinet (Thermo, 1389)

# HEK293/Human GLP-1R Stable Cell Line (High Expression) Data Sheet

## • *Recovery*

1. Thaw the vial by gentle agitation in a 37°C water bath. To reduce the possibility of contamination, keep the cap out of the water. Thawing should be rapid (approximately 2 minutes).
2. Remove the vial from the water bath as soon as the contents are thawed, and decontaminate by spraying with 70% ethanol. All the operations from this point on should be carried out under strict aseptic conditions.
3. Transfer the vial contents to a centrifuge tube containing 4.0 mL complete growth medium and spin at approximately 1000 rpm for 5 minutes.
4. Resuspend cell pellet with 5 mL complete growth medium and transfer the cell suspension into T-75 flask containing 10-15 mL of pre-warmed complete growth medium.
5. Incubate at 37°C with 5% CO<sub>2</sub> incubator until the cells are ready to be split.

## • *Subculture*

1. Remove and discard culture medium.
2. Wash the cells once with sterile PBS.
3. Add 2 mL of 0.25% trypsin to cell culture flask. Place the flask at 37°C for 2-3 minutes, until 90% of the cells have detached.
4. Add 6.0 to 8.0 mL of culture medium and aspirate cells by gently pipetting.
5. Add appropriate aliquots of the cell suspension to new culture vessel.
6. Incubate at 37°C with 5% CO<sub>2</sub> incubator.

**Subcultivation Ratio:** A subcultivation ratio of 1:6 to 1:10 is recommended.

**Medium Renewal:** Every 2 to 3 days.

# HEK293/Human GLP-1R Stable Cell Line (High Expression) Data Sheet

## • *Cryopreservation*

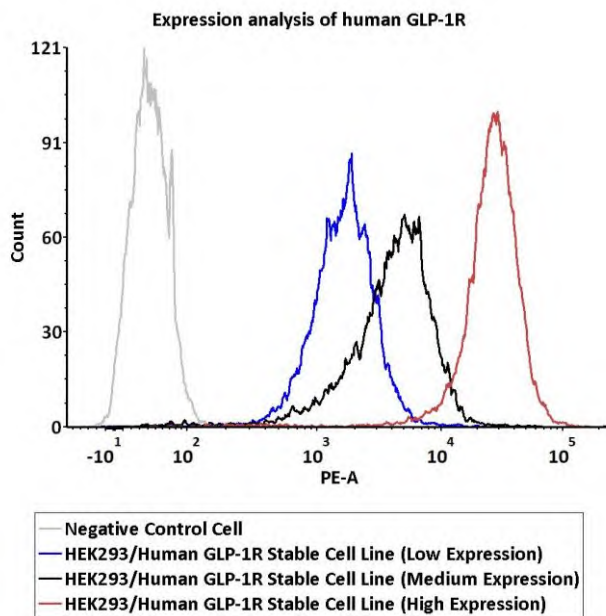
1. Remove and discard spent medium.
2. Detach cells from the cell culture flasks with 0.25% trypsin.
3. Centrifuge at 1000 rpm for 5 min at RT to pellet cells.
4. Resuspend the cell pellets with complete growth medium and count viable cells.
5. Centrifuge at 1000 rpm for 5 min at RT and resuspend cells in freezing medium to a concentration of  $5 \times 10^6$  to  $1 \times 10^7$  cells/mL.
6. Aliquot into cryogenic storage vials. Place vials in a programmable cooler or an insulated box placed in a  $-80^\circ\text{C}$  freezer overnight, then transferring to liquid nitrogen storage.

## • *Storage*

- **Product format:** Frozen
- **Storage conditions:** Liquid nitrogen immediately upon receipt

# HEK293/Human GLP-1R Stable Cell Line (High Expression) Data Sheet

• *Receptor Assay*

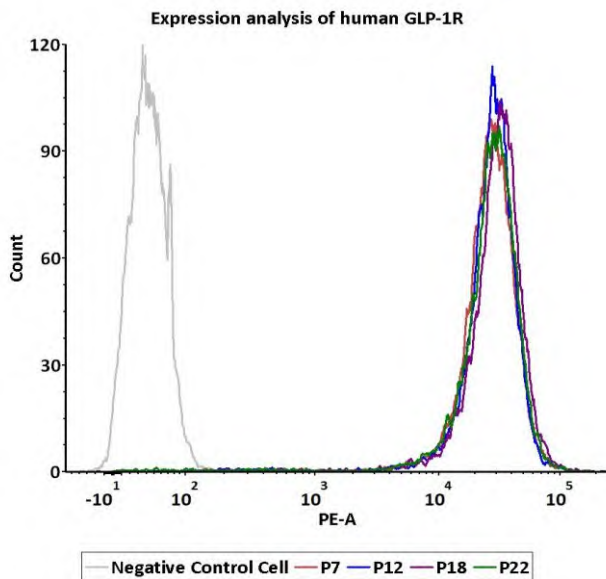


| Catalog No.        | Stable Cell Line  | MFI for GLP-1R (PE) |
|--------------------|---|---------------------|
| <b>CHEK-ATP162</b> | <b>HEK293/Human GLP-1R Stable Cell Line (Low Expression)</b>    | <b>1604.76</b>      |
| <b>CHEK-ATP161</b> | <b>HEK293/Human GLP-1R Stable Cell Line (Medium Expression)</b> | <b>4208.08</b>      |
| <b>CHEK-ATP160</b> | <b>HEK293/Human GLP-1R Stable Cell Line (High Expression)</b>   | <b>26203.40</b>     |

**Fig1. Expression analysis of human GLP-1R on HEK293/Human GLP-1R Stable Cell Line by FACS.** Cell surface staining using PE-labeled anti-human GLP-1R antibody was performed on HEK293/Human GLP-1R Stable Cell Line with different expression levels: HEK293/Human GLP-1R Stable Cell Line (Low Expression); HEK293/Human GLP-1R Stable Cell Line (Medium Expression); HEK293/Human GLP-1R Stable Cell Line (High Expression).

# HEK293/Human GLP-1R Stable Cell Line (High Expression) Data Sheet

• *Passage Stability*



| Passage | MFI for GLP-1R (PE) |
|---------|---------------------|
| P7      | 26209.5             |
| P12     | 27283.6             |
| P18     | 30059.66            |
| P22     | 27361.13            |

**Fig2. Passage stability analysis of receptors expression by FACS.** Flow cytometry surface staining of human GLP-1R on HEK293/Human GLP-1R Stable Cell Line (High Expression) demonstrates consistent mean fluorescent intensity across passage 7-22.

# HEK293/Human GLP-1R Stable Cell Line (High Expression) Data Sheet

• *License Disclosure*

This reporter cell is provided for research use only. This license does not permit you to share, distribute, sell, sublicense, or otherwise make this reporter cell available for use to other laboratories, departments, research institutions, hospitals, universities, or biotech companies. The license does not permit modification of this reporter cell in any way. Inappropriate use or distribution of this reporter cell will result in revocation of the license. Modifications of this cell line, transfer to another facility, or commercial use of the cells may require a separate license and additional fees. AcroBiosystems does not warrant the suitability of this reporter cell for any particular use, and does not accept any liability in connection with the handling or use of this reporter cell.

• *Related Products*

**Products**

**Cat.No.**

HEK293/Human GLP-1R Stable Cell Line (Medium Expression)

CHEK-ATP161

HEK293/Human GLP-1R Stable Cell Line (Low Expression)

CHEK-ATP162