

Application

Binding assay by FACS and cell based ELISA.

Description

Human PD-L1, GFP Tag-HEK293 cells stably expressing exogenous human PD-L1 (Programmed cell death 1 ligand 1, CD274, B7-H1, PDCD1L1, PDCD1LG1, AA sequence : Leu 19 - Leu 238, Protein Acc.# : Q9NZQ7-1). At the same time, GFP protein as a marker was expressed in HEK293/hPD-L1 cells for screening positive cells by FACS.

Growth Properties

Adherent

Selection Marker

G418 (0.5mg/mL)

Culture Medium

DMEM medium +10% FBS

Freeze Medium

20% FBS+10% DMSO+70% DMEM medium

Format/Supplied As

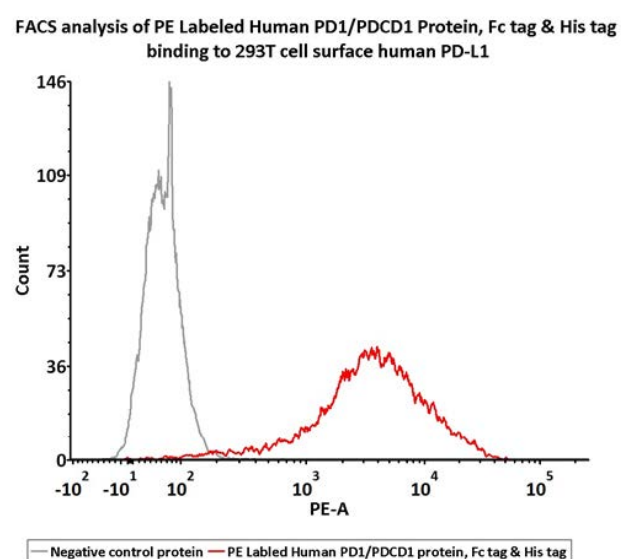
1 vial contains ~ 5x10⁶ cells in 1 ml of 10% DMSO in (DMEM+10%FBS).

Storage

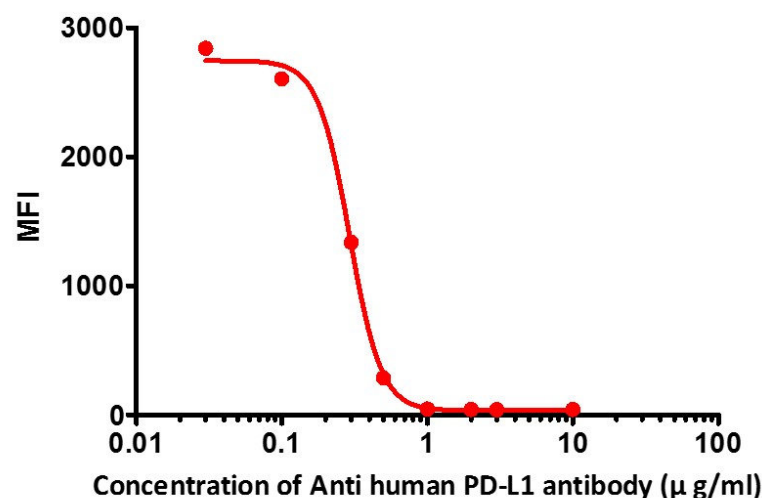
Frozen in liquid nitrogen

Instructions for Use

See data sheet for detailed culturing and assay protocol

Mycoplasma Testing**Bioactivity-FACS**

Flow Cytometry assay shows that PE-Labeled Human PD-1, Fc Tag, His Tag (recommended for neutralizing assay) (Cat. No. PD1-HP2F2) can bind to 293T cells overexpressing human PD-L1. 1 μ l stock solution per million cells (Routinely tested).

Neutralizing Anti-human PD-L1 antibody screening assay

FACS analysis shows that the binding of PE-Labeled Human PD-1, Fc Tag, His Tag (recommended for neutralizing assay) (Cat. No. PD1-HP2F2) to 293T overexpressing PD-L1 was inhibited by increasing concentration of neutralizing anti- human PD-L1 antibody. The IC₅₀ is 0.29 μ g/ml (Routinely tested).

Please contact us via TechSupport@acrobiosystems.com if you have any question on this product.