

Synonym

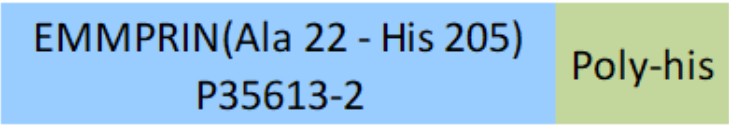
Basigin,BSG,5F7,CD147,EMMPRIN,M6,OK,TCSF

Source

FITC-Labeled Human EMMPRIN, His Tag (CD7-HF222) is expressed from human 293 cells (HEK293). It contains AA Ala 22 - His 205 (Accession # [P35613-2](#)). It is the FITC labeled form of Human EMMPRIN, His Tag (CD7-H5222).

Predicted N-terminus: Ala 22

Molecular Characterization



This protein carries a polyhistidine tag at the C-terminus

The protein has a calculated MW of 20.9 kDa. The protein migrates as 28-35 kDa under reducing (R) condition (SDS-PAGE) due to glycosylation.

Conjugate

FITC

Excitation source: 488 nm spectral line, argon-ion laser

Excitation Wavelength: 488 nm

Emission Wavelength: 535 nm

Labeling

The primary amines in the side chains of lysine residues and the N-terminus of the protein are conjugated with FITC using standard chemical labeling method. The residual FITC is removed by molecular sieve treatment during purification process.

Protein Ratio

The FITC to protein molar ratio is 1-3.

Endotoxin

Less than 1.0 EU per µg by the LAL method.

Purity

>90% as determined by SDS-PAGE.

Formulation

Lyophilized from 0.22 µm filtered solution in PBS, pH7.4 with trehalose as protectant.

Contact us for customized product form or formulation.

Reconstitution

Please see Certificate of Analysis for specific instructions.

For best performance, we strongly recommend you to follow the reconstitution protocol provided in the CoA.

Storage

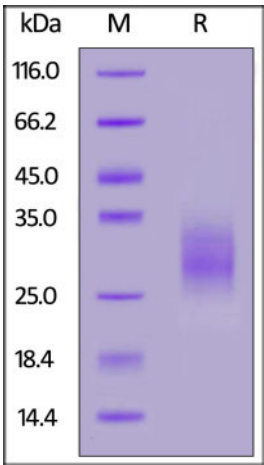
For long term storage, the product should be stored at lyophilized state at -20°C or lower.

Please protect from light and avoid repeated freeze-thaw cycles.

This product is stable after storage at:

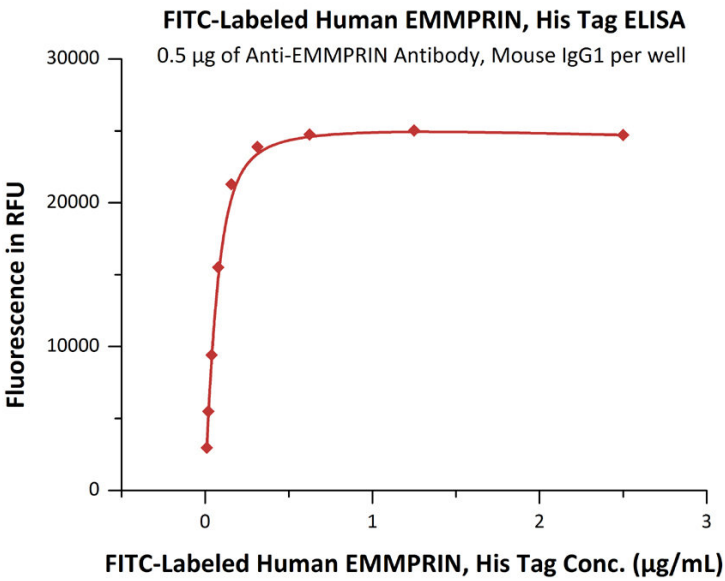
- 20°C to -70°C for 12 months in lyophilized state;
- 70°C for 3 months under sterile conditions after reconstitution.

SDS-PAGE



FITC-Labeled Human EMMPRIN, His Tag on SDS-PAGE under reducing (R) condition. The gel was stained overnight with Coomassie Blue. The purity of the protein is greater than 90%.

Bioactivity-ELISA



Immobilized Anti-EMMPRIN Antibody, Mouse IgG1 at 5 µg/mL (100 µL/well) can bind FITC-Labeled Human EMMPRIN, His Tag (Cat. No. CD7-HF222) with a linear range of 0.01-0.078 µg/mL (QC tested).

Background

CD147, also known as Basigin (BSG), or extracellular matrix metalloproteinase inducer (EMMPRIN). The human basigin protein contains 269 amino acids that form two heavily glycosylated C2 type immunoglobulin-like domains at the N-terminal extracellular portion. A second form of basigin has also been characterized that contains one additional immunoglobulin-like domain in its extracellular portion. As members of the immunoglobulin superfamily play fundamental roles in intercellular recognition involved in various immunologic phenomena, differentiation, and development, basigin is thought also to play a role in intercellular recognition and regulate several distinct functions, such as spermatogenesis, expression of the monocarboxylate transporter and the responsiveness of lymphocytes. Basigin is a type I integral membrane receptor that has many ligands, including the cyclophilin (CyP) proteins Cyp-A and CyP-B and certain integrins.

Clinical and Translational Updates

Please contact us via TechSupport@acrobiosystems.com if you have any question on this product.