

Synonym

CD36,SCARB3,BDPLT10,CHDS7,FAT,GP3B,GP4,GPIV,PASIV,Platelet Glycoprotein 4,glycoprotein IV,gpIV,glycoprotein IIIb,gpIIIb

Source

Human CD36, His Tag(CD6-H5221) is expressed from human 293 cells (HEK293). It contains AA Gly 30 - Asn 439 (Accession # [NP_001001547.1](#)). Predicted N-terminus: Gly 30

Molecular Characterization

CD36(Gly 30 - Asn 439)
NP_001001547.1

Poly-his

This protein carries a polyhistidine tag at the C-terminus.

The protein has a calculated MW of 48.5 kDa. The protein migrates as 66-80 kDa under reducing (R) condition (SDS-PAGE) due to glycosylation.

Endotoxin

Less than 1.0 EU per µg by the LAL method.

Purity

>95% as determined by SDS-PAGE.

>90% as determined by SEC-MALS.

Formulation

Lyophilized from 0.22 µm filtered solution in PBS, pH7.4 with trehalose as protectant.

Contact us for customized product form or formulation.

Reconstitution

Please see Certificate of Analysis for specific instructions.

For best performance, we strongly recommend you to follow the reconstitution protocol provided in the CoA.

Storage

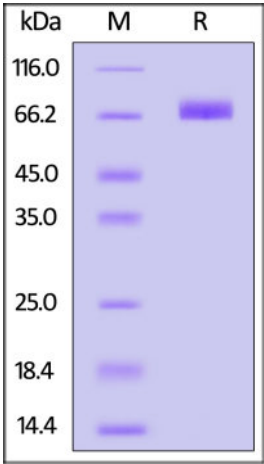
For long term storage, the product should be stored at lyophilized state at -20°C or lower.

Please avoid repeated freeze-thaw cycles.

This product is stable after storage at:

- 20°C to -70°C for 12 months in lyophilized state;
- 70°C for 3 months under sterile conditions after reconstitution.

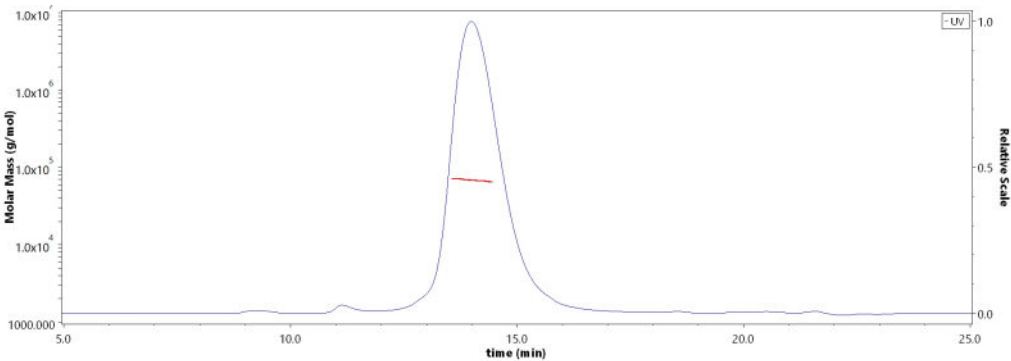
SDS-PAGE



Human CD36, His Tag on SDS-PAGE under reducing (R) condition. The gel was stained with Coomassie Blue. The purity of the protein is greater than 95%.

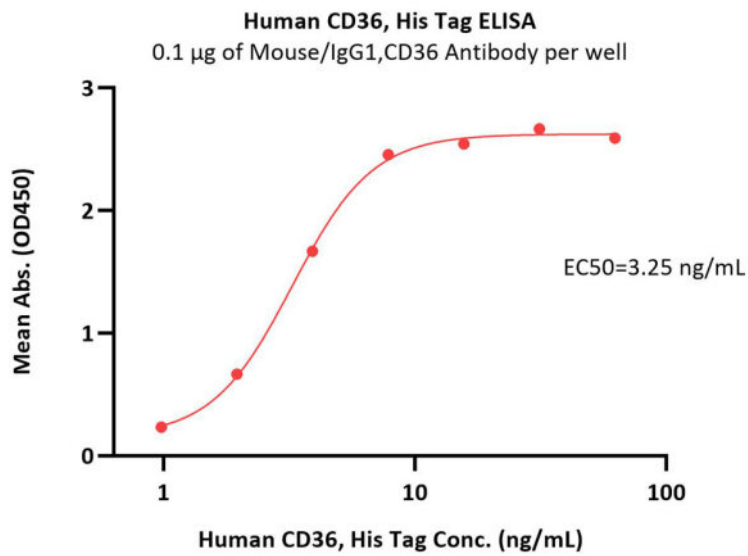
Bioactivity-ELISA

SEC-MALS

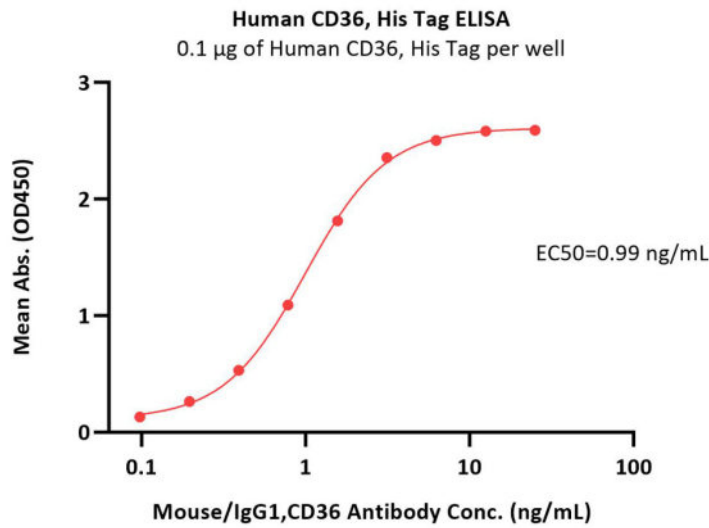


The purity of Human CD36, His Tag (Cat. No. CD6-H5221) is more than 90% and the molecular weight of this protein is around 58-78 kDa verified by SEC-MALS.

[Report](#)



Immobilized Mouse/IgG1,CD36 Antibody at 1 µg/mL (100 µL/well) can bind Human CD36, His Tag (Cat. No. CD6-H5221) with a linear range of 1-16 ng/mL (QC tested).



Immobilized Human CD36, His Tag (Cat. No. CD6-H5221) at 1 µg/mL (100 µL/well) can bind Mouse/IgG1,CD36 Antibody with a linear range of 0.1-6 ng/mL (Routinely tested).

Background

CD36 (Cluster of Differentiation 36) is also known as platelet membrane glycoprotein IV (GPIV), fatty acid translocase (FAT), thrombospondin receptor, collagen receptor, and scavenger receptor class B, member 3 (SRB3), is a member of the class B scavenger receptor family of cell surface proteins. The human CD36 gene encodes a single chain 472 amino acid residue protein containing both an N- and a C-terminal cytoplasmic tail and an extracellular loop.CD36 is found on platelets, erythrocytes, monocytes, differentiated adipocytes, mammary epithelial cells, spleen cells and some skin microdermal endothelial cells. CD36 is a multiligand pattern recognition receptor that interacts with a large number of structurally dissimilar ligands, including long chain fatty acid (LCFA), advanced glycation end products (AGE), thrombospondin-1, oxidized low-density lipoproteins (oxLDLs), high density lipoprotein (HDL), phosphatidylserine, apoptotic cells, beta-amyloid fibrils (fAβ), collagens I and IV, and Plasmodium falciparum infected erythrocytes. CD36 is required for the anti-angiogenic effects of thrombospondin1 In the corneal neovascularization assay. On binding a ligand the protein and ligand are internalized. This internalization is independent of macropinocytosis and occurs by an actin dependent mechanism requiring the activation Src-family kinases, JNK and Rho-family GTPases. CD36 ligands have also been shown to promote sterile inflammation through assembly of a Toll-like receptor 4 and 6 heterodimer.

Clinical and Translational Updates

Please contact us via TechSupport@acrobiosystems.com if you have any question on this product.