



## Synonym

ANGPTL7,CDT6

## Source

Human ANGPTL7 Protein, His Tag(AN7-H52H3) is expressed from human 293 cells (HEK293). It contains AA Gln 27 - Pro 346 (Accession # [O43827-1](#)).

## Molecular Characterization

ANGPTL7(Gln 27 - Pro 346)  
O43827-1 Poly-his

This protein carries a polyhistidine tag at the C-terminus.

The protein has a calculated MW of 39.0 kDa. The protein migrates as 48-55 kDa when calibrated against [Star Ribbon Pre-stained Protein Marker](#) under reducing (R) condition (SDS-PAGE) due to glycosylation.

## Endotoxin

Less than 1.0 EU per µg by the LAL method.

## Purity

>90% as determined by SDS-PAGE.

## Formulation

Lyophilized from 0.22 µm filtered solution in PBS, pH7.4 with trehalose as protectant.

Contact us for customized product form or formulation.

## Reconstitution

Please see Certificate of Analysis for specific instructions.

*For best performance, we strongly recommend you to follow the reconstitution protocol provided in the CoA.*

## Storage

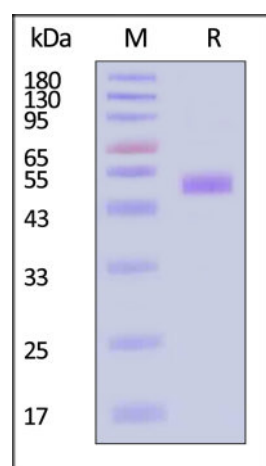
For long term storage, the product should be stored at lyophilized state at -20°C or lower.

*Please avoid repeated freeze-thaw cycles.*

This product is stable after storage at:

- -20°C to -70°C for 12 months in lyophilized state;
- -70°C for 3 months under sterile conditions after reconstitution.

## SDS-PAGE

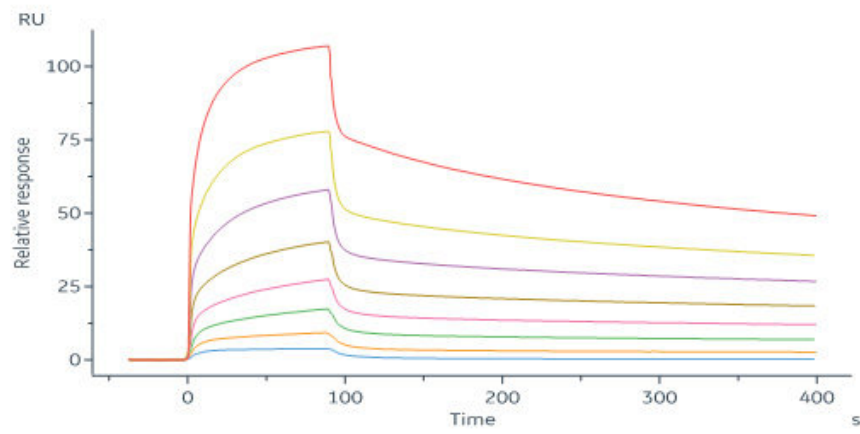


Human ANGPTL7 Protein, His Tag on SDS-PAGE under reducing (R) condition. The gel was stained with Coomassie Blue. The purity of the protein is greater than 90% (With [Star Ribbon Pre-stained Protein Marker](#)).

## Bioactivity-SPR

Discounts, Gifts,  
and more!





Cynomolgus LILRB4, His Tag (Cat. No. CDK-C5227) immobilized on CM5 Chip can bind Human ANGPTL7 Protein, His Tag (Cat. No. AN7-H52H3) with an affinity constant of  $0.792 \mu\text{M}$  as determined in a SPR assay (Biacore 8K) (Routinely tested).

## Background

Angiopoietin-like 7 (ANGPTL7) is also known as Corneal-Derived Transcript 6 (CDT6), and is a secreted glycoprotein that is structurally related to the angiopoietins. It is expressed in the corneal stroma, trabecular meshwork, and sclera and is elevated in glaucoma aqueous humor. Recently, ANGPTL proteins, including ANGPTL-2, -3, -4, -5 and -7, are identified as growth factors in combination with SCF, Thrombopoietin, IGF-II and FGF acidic that enhance the expansion and engraftment of human and mouse hematopoietic stem cells.

## Clinical and Translational Updates

Discounts, Gifts,  
and more!

